

| | | |
|---|------------------------|--|
| LOC/DME I-HIQ 110.9 Chan 46 | APP CRS 044° | Rwy Idg 11010 TDZE 13 Apt Elev 13 |
|---|------------------------|--|

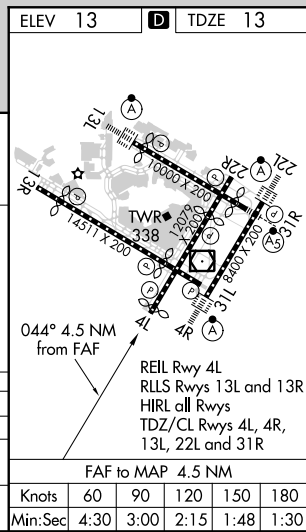
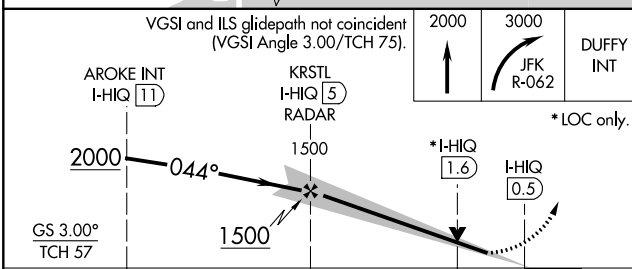
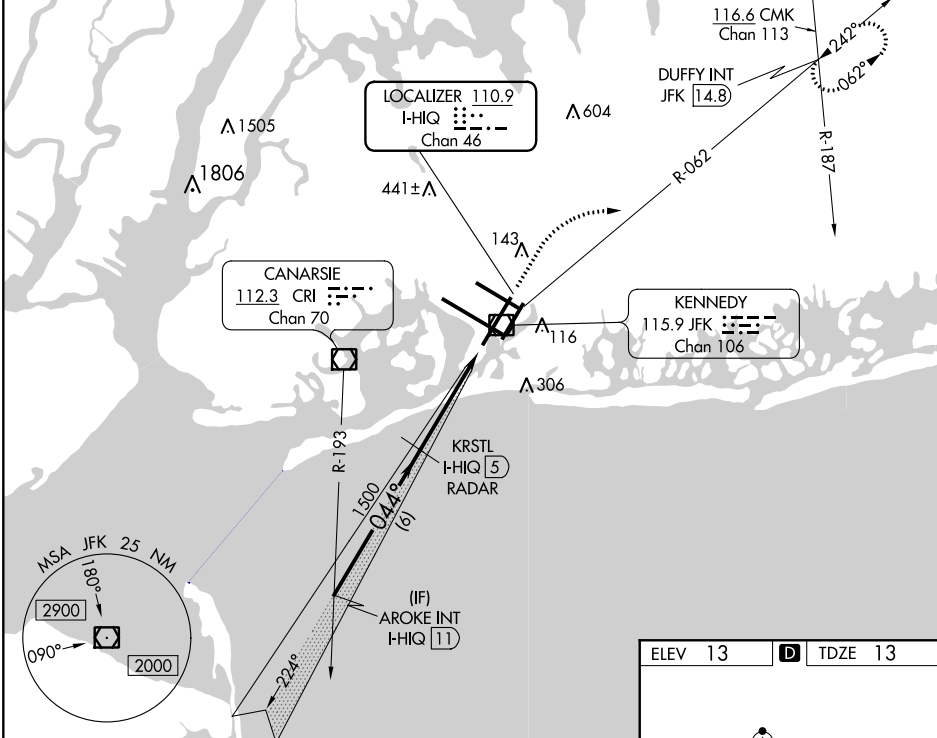
ILS or LOC RWY 4L

JOHN F KENNEDY INTL (JFK)

RADAR required for procedure entry. DME or RADAR required for LOC only.
 Simultaneous approach authorized.

MISSED APPROACH: Climb to 2000 then climbing right turn to 3000 on JFK VOR/DME R-062 to DUFFY INT/JFK 14.8 DME and hold.

| | | | | | |
|---|--|---|--|---|-------|
| D-ATIS (ARR/DEP) (ARR-NE) (ARR-SW) 128.725 117.7 115.4 | NEW YORK APP CON 128.125 269.0 | KENNEDY TOWER Rwys 4R/22L and 13L/31R 119.1 281.55 Rwys 4L/22R and 13R/31L 123.9 281.55 | GND CON 121.9 135.05 348.6 348.6 | CLNC DEL 135.05 348.6 | CPDLC |
|---|--|---|--|---|-------|



| CATEGORY | A | B | C | D |
|-------------------|--------|-------------|------------------------|----------------------|
| S-ILS 4L | 223/40 | | 210 (300-¾) | |
| S-LOC 4L | 460/55 | 447 (500-1) | 460-1¾ | 447 (500-1¾) |
| C CIRCLING | 640-1 | 627 (700-1) | 680-1¾ 667 (700-1¾) | 680-2 667 (700-2) |

NE-2, 25 FEB 2021 to 25 MAR 2021

NE-2, 25 FEB 2021 to 25 MAR 2021