

RNAV (RNP) Z RWY 31R

JOHN F KENNEDY INTL (JFK)

APP CRS 314°	Rwy Idg 8973
	TDZE 12
	Apt Elev 13

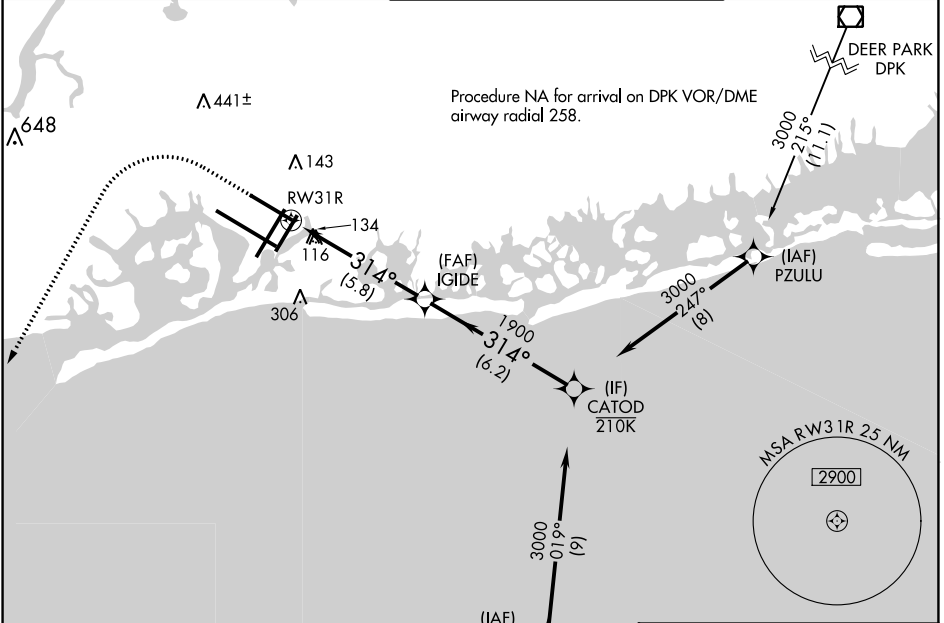
RNP AR APCH.

▼ For uncompensated Baro-VNAV systems, procedure NA below -12°C or above 54°C. Simultaneous approach authorized. Use of FD or AP required during simultaneous operations.

MALSRR

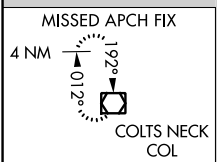
MISSED APPROACH: Climb to 1800 then climbing left turn to 4000 direct COL VOR/DME and hold.

D-ATIS (ARR/DEP) (ARR-NE) (ARR-SW) 128.725 117.7 115.4	NEW YORK APP CON 128.125 269.0	KENNEDY TOWER Rwys 4R/22L and 13L/31R 119.1 281.55 Rwys 4L/22R and 13R/31L 123.9 281.55	GND CON 121.9 348.6	CLNC DEL 135.05 348.6	CPDLC
---	--	---	-------------------------------	---------------------------------	-------



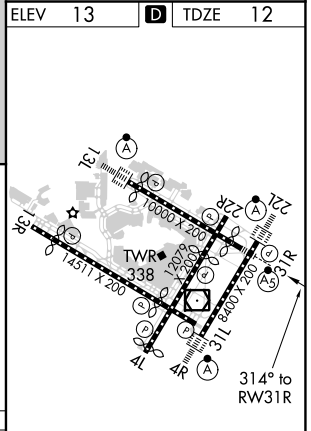
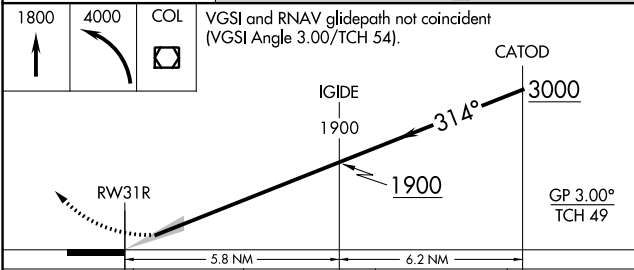
NE-2, 25 FEB 2021 to 25 MAR 2021

NE-2, 25 FEB 2021 to 25 MAR 2021



ELEV 13 TDZE 12

VGSI and RNAV glidepath not coincident (VGSI Angle 3.00/TCH 54).



CATEGORY	A	B	C	D
RNP 0.30 DA		458/50	446 (500-1)	

AUTHORIZATION REQUIRED

REIL Rwy 4L
RLS Rwys 13L and 13R
HIRL all Rwys
TDZ/CL Rwys 4L, 4R, 13L, 22L and 31R