

(SKORR4.SKORR) 19003

SKORR FOUR DEPARTURE (RNAV) AL-610 (FAA)

JOHN F KENNEDY INTL (JFK)

NEW YORK, NEW YORK

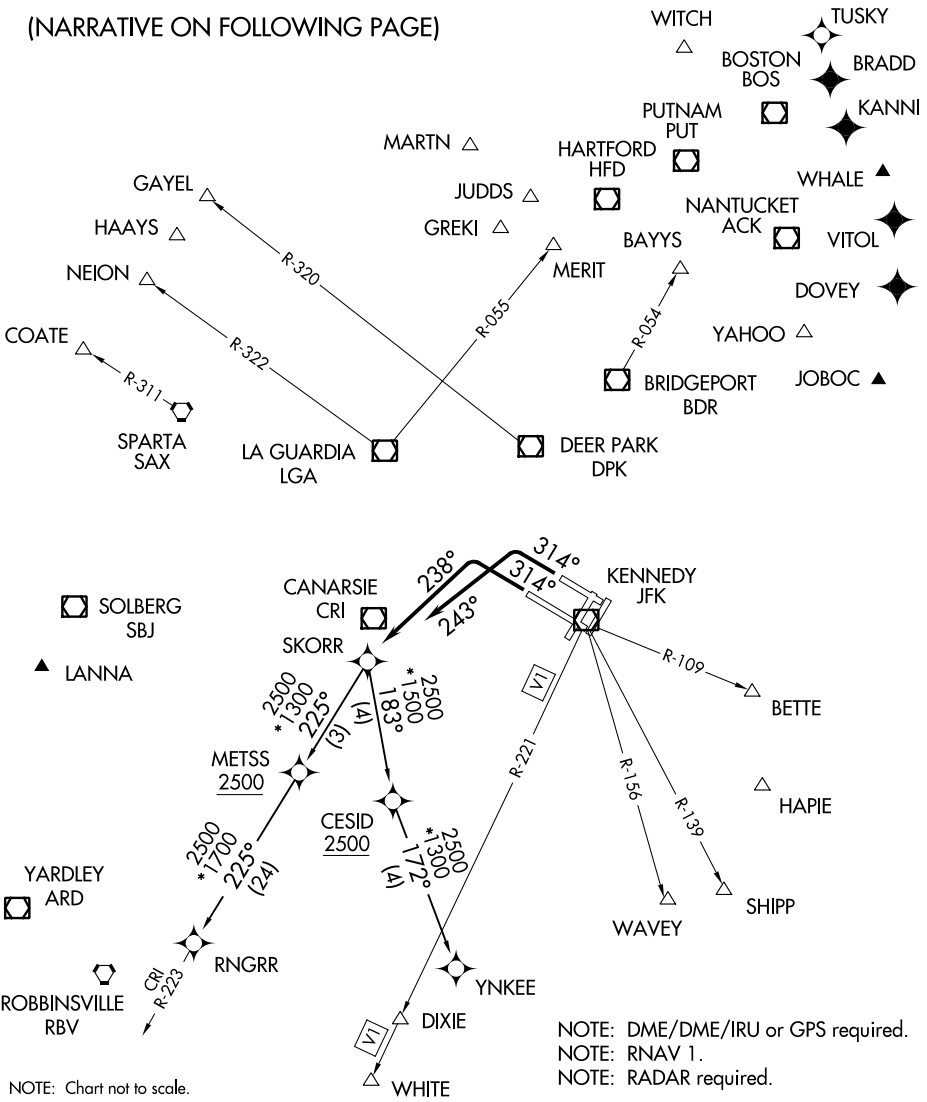
D-ATIS
128.725
CLNC DEL
135.05 348.6
CPDLC
NEW YORK DEP CON
135.9 353.75

TAKEOFF MINIMUMS:

Rwys 4L, 4R, 13L, 13R, 22L, 22R: NA - Noise Abatement.
Rwy 31R: Standard with minimum climb of 500' per NM to 3000.
Rwy 31L: Standard with minimum climb of 500' per NM to 3000.

- ◆ QUBIS
- ◆ TAFFY
- △ TOPPS
- △ EBONY
- ▲ ALEX
- ◆ TUSKY
- ◆ BRADD
- ◆ KANNI
- ▲ WHALE
- ◆ VITOL
- ◆ DOVEY
- △ YAHOO
- ▲ JOBOC

(NARRATIVE ON FOLLOWING PAGE)



NE-2, 25 FEB 2021 to 25 MAR 2021

NE-2, 25 FEB 2021 to 25 MAR 2021

NOTE: Chart not to scale.

NOTE: DME/DME/IRU or GPS required.
NOTE: RNAV 1.
NOTE: RADAR required.

SKORR FOUR DEPARTURE (RNAV) (SKORR4.SKORR) 19JUL18

NEW YORK, NEW YORK
JOHN F KENNEDY INTL (JFK)