


LOC/DME I-JHW <b>109.7</b> Chan <b>34</b>	APP CRS <b>249°</b>	Rwy Idg <b>5299</b> TDZE <b>1721</b> Apt Elev <b>1723</b>
---	------------------------	---

# ILS or LOC RWY 25

CHAUTAUQUA COUNTY/JAMESTOWN (JHW)

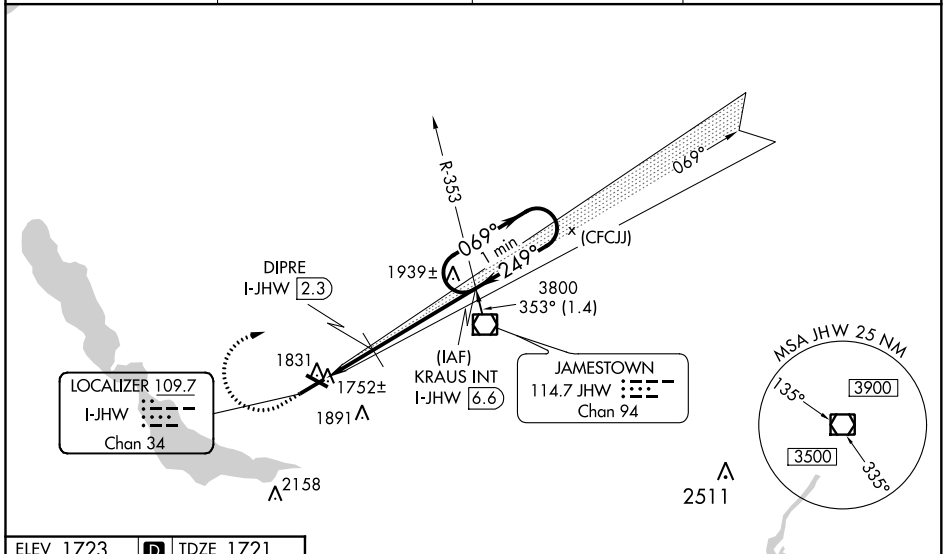
**⚠** Circling to Rwy 13/31 NA at night. Autopilot coupled approach NA below 2420. VDP NA with Dunkirk altimeter setting. Cat D SI NA when using Dunkirk altimeter. When local altimeter setting not received, use Dunkirk altimeter setting and increase S-ILS 25 DA to 2161 and all MDA 200 feet; increase S-ILS 25 all Cats visibility 3/4 mile; increase S-LOC 25 Cats A and B visibility to 3/4, Circling Cats A and B 1 1/4, increase S-LOC 25 Cats C and D visibility to 2, Circling Cats C visibility 2 3/4 and D visibility 3, DIPRE fix minimums increase S-LOC 25 Cats C and D visibility 1 1/8, and Circling Cats C visibility 2 and Cat D visibility 2 3/4 mile. For inoperative MALS R when using Dunkirk altimeter setting, increase S-ILS 25 all Cats visibility 1 1/8 mile. VDP NA when using Dunkirk altimeter setting.

**MALS R**

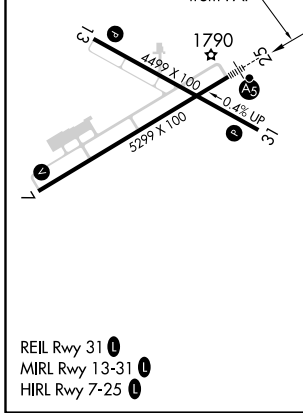


**MISSED APPROACH:** Climb to 2420 then climbing right turn to 3800 on heading 125° and I-JHW course NE to KRAUS INT/I-JHW 6.6 DME and hold.

AWOS-3PT <b>118.425</b>	BUFFALO APP CON* <b>126.05</b>	CLNC DEL <b>126.05</b>	UNICOM <b>122.7</b> (CTAF) <b>📻</b>
----------------------------	-----------------------------------	---------------------------	--



ELEV 1723	<b>D</b>	TDZE 1721
-----------	----------	-----------



2420	3800	LOC crs NE	KRAUS INT	KRAUS INT I-JHW 6.6	One Minute Holding Pattern
↑		hdg 125°		3800	
*LOC only.		I-JHW 0.2	I-JHW 1.1	DIPRE I-JHW 2.3	GS 3.00° TCH 48
		*2420		3800	* 2620 when using Dunkirk altimeter setting.
		1 NM		4.3 NM	
CATEGORY	A	B	C	D	
S-ILS 25	1971-1/2		250 (300-1/2)		
S-LOC 25	2420-1/2	699 (700-1/2)	2420-1 1/2		699 (700-1 1/2)
<b>C</b> CIRCLING	2420-1	697 (700-1)	2420-2	2420-2 1/4	
		697 (700-2)		697 (700-2 1/4)	
DIPRE FIX MINIMUMS (DME REQUIRED)					
S-LOC 25	2080-1/2	359 (400-1/2)	2080-5/8	359 (400-5/8)	
<b>C</b> CIRCLING	2200-1	477 (500-1)	2200-1 1/2	2340-2	
		477 (500-1 1/2)		617 (700-2)	

NE-2, 25 FEB 2021 to 25 MAR 2021

NE-2, 25 FEB 2021 to 25 MAR 2021