


WAAS CH 56499 W20A	APP CRS 196°	Rwy Idg TDZE Apt Elev	6350 705 705
--	------------------------	-----------------------------	---

RNAV (GPS) RWY 20

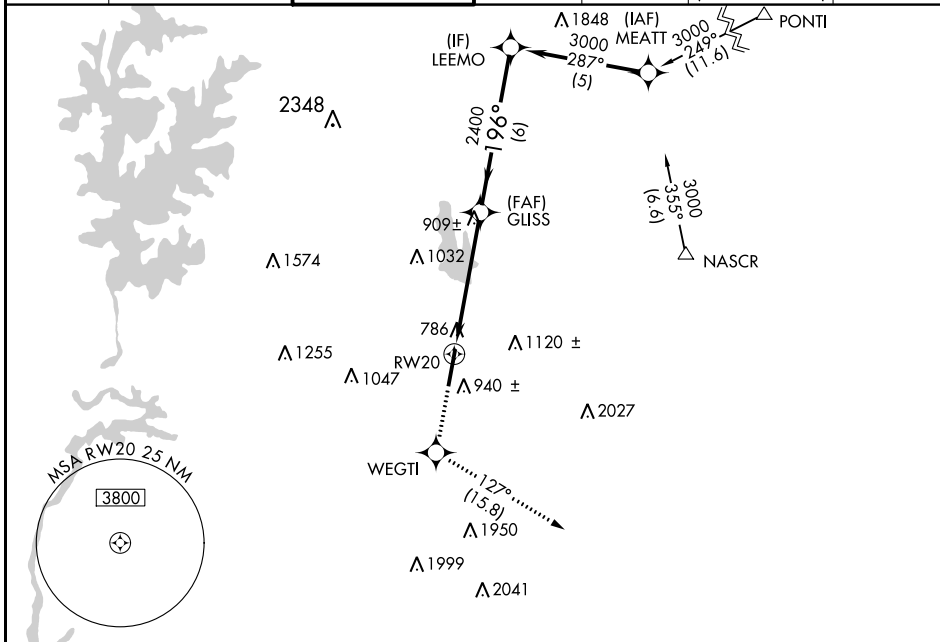
CONCORD-PADGETT RGNL (JQF)

RNP APCH.

V For uncompensated Baro-VNAV systems, LNAV/VNAV NA below -16°C or above 54°C. For inop ALS, increase LNAV/VNAV visibility all Cats to 1½ SM.
A

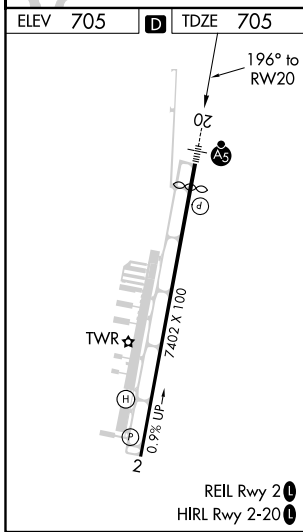
MALSR 
MISSED APPROACH: Climb to 3000 direct WEGTI and on track 127° to LOCAS and hold.

ATIS ★ 133.675	CHARLOTTE APP CON 128.32 307.8	CONCORD TOWER ★ 134.65 (CTAF) 0	GND CON 121.85	CLNC DEL 118.55	CLNC DEL 127.25 (when twr closed)	UNICOM 122.95
--------------------------	--	---	--------------------------	---------------------------	--	-------------------------



SE-2, 25 FEB 2021 to 25 MAR 2021

SE-2, 25 FEB 2021 to 25 MAR 2021



ELEV 705	D	TDZE 705		
3000	WEGTI	LOCAS		
↑	✧	△		
	tr 127°			
*LNAV only.				
RWY 20	GLISS 2400	LEEMO 3000		
*1.8 NM to RWY 20	196°	3000		
1.8 NM	3.3 NM	6 NM		
GP 3.00°		TCH 44		
CATEGORY	A	B	C	D
LPV DA		955-½	250 (300-½)	
LNAV/VNAV DA		1222-1¼	517 (600-1¼)	
LNAV MDA	1300-½	595 (600-½)	1300-1¼	595 (600-1¼)
C CIRCLING	1300-1	595 (600-1)	1480-2¼	1480-2½
			775 (800-2¼)	775 (800-2½)