

VOR/DME FZT 111.4 Chan 51	APP CRS 121°	Rwy Idg TDZE Apt Elev	5006 678 678
--	------------------------	-----------------------------	---

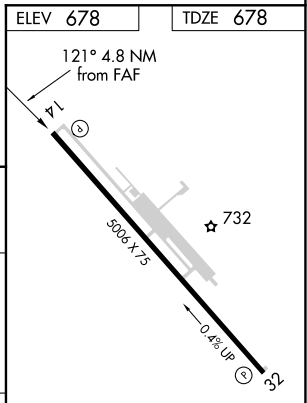
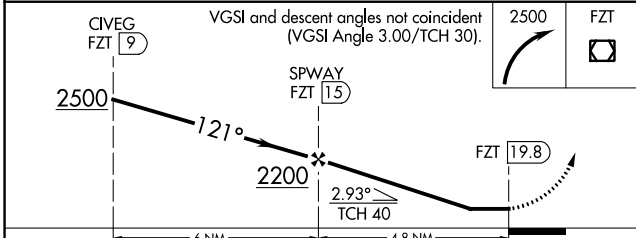
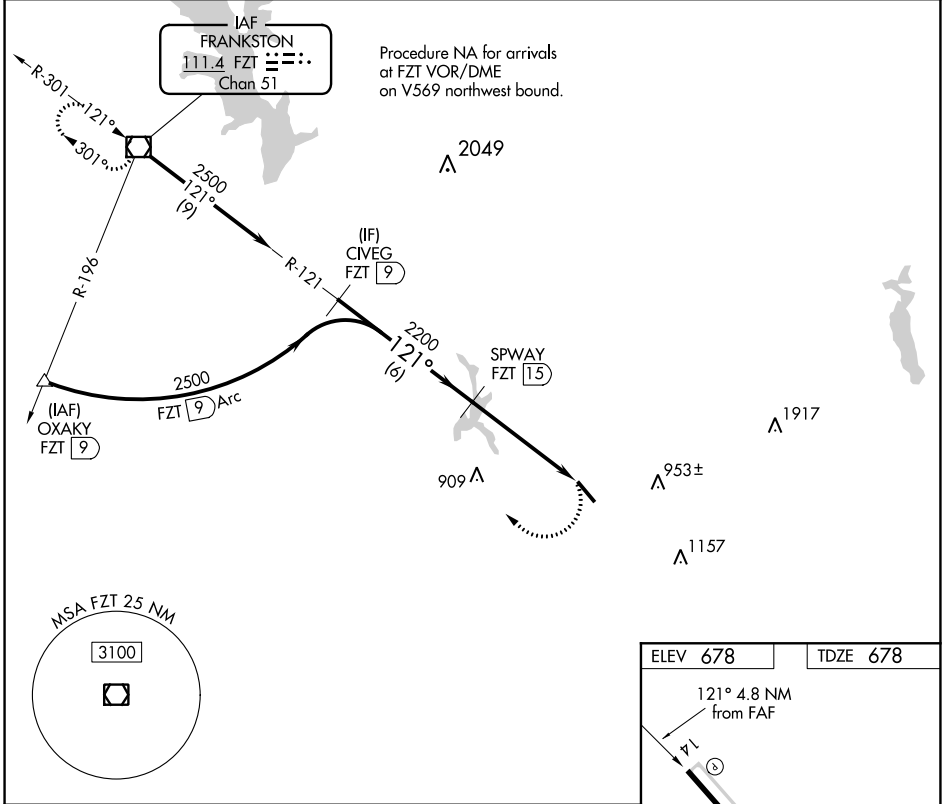
VOR RWY 14

CHEROKEE COUNTY (JSO)

DME required.

MISSED APPROACH: Climbing right turn to 2500 direct FZT VOR/DME and hold.

AWOS-3 119.075	LONGVIEW APP CON * 128.75 379.15	UNICOM 122.7 (CTAF) 0
--------------------------	--	---------------------------------



CATEGORY	A	B	C	D
S-14	1080-1	402 (500-1)	1080-1¼ 402 (500-1¼)	NA
CIRCLING	1080-1 402 (500-1)	1140-1 462 (500-1)	1140-1½ 462 (500-1½)	NA

REIL Rwy 14
MIRL Rwy 14-32 0

SC-5, 25 FEB 2021 to 25 MAR 2021

SC-5, 25 FEB 2021 to 25 MAR 2021