

WAAS CH 78325 W02A	APP CRS 018°	Rwy Idg TDZE Apt Elev	6001 484 501
---------------------------------	------------------------	-----------------------------	---

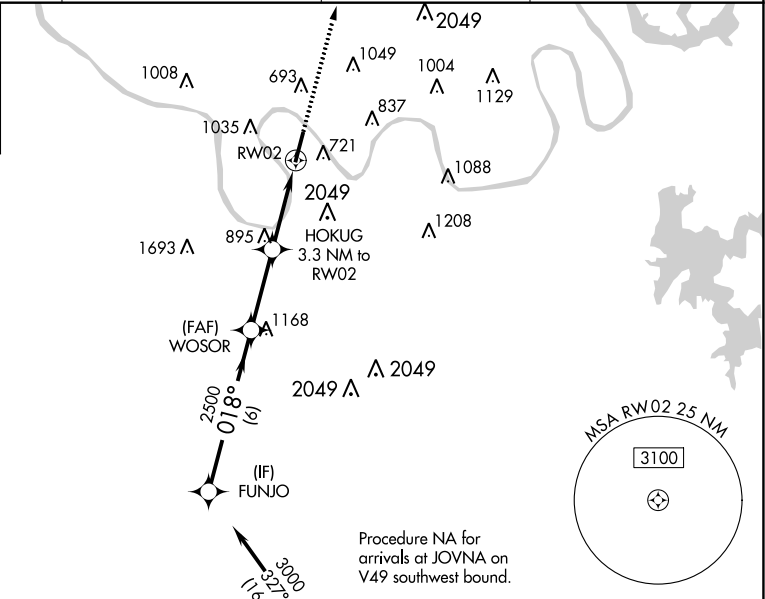
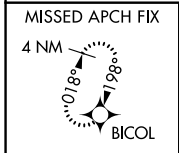
RNAV (GPS) RWY 2

JOHN C TUNE (JWN)

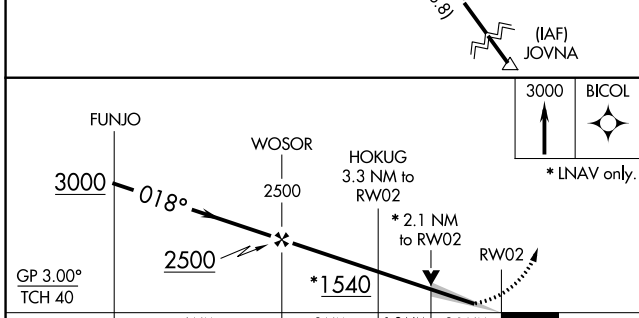
NA For uncompensated Baro-VNAV systems, LNAV/VNAV NA below -15°C (5°F) or above 54°C (130°F). Circling NA E of Rwy 2-20. Baro-VNAV and VDP NA when using Nashville Intl altimeter setting. DME/DME RNP-0.3 NA. When local altimeter setting not received, use Nashville Intl altimeter setting and increase all DAs 39 feet and all MDAs 40 feet; increase LPV visibility all Cats 1/8 SM, LNAV visibility Cat B 1/4 SM.

MISSED APPROACH:
Climb to 3000 direct BICOL and hold.

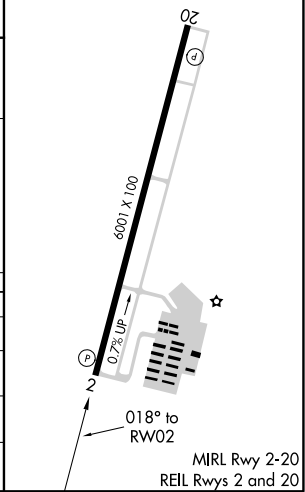
AWOS-3 127.075	NASHVILLE APP CON 119.35 372.0	CLNC DEL 124.55	UNICOM 122.7 (CTAF)
--------------------------	--	---------------------------	-------------------------------



Procedure NA for arrivals at JOVNA on V49 southwest bound.



ELEV 501	D	TDZE 484
----------	----------	----------



CATEGORY	A	B	C	D
LPV DA		734-7/8	250 (300-7/8)	
LNAV/VNAV DA		1079-2 1/2	595 (600-2 1/2)	
LNAV MDA	1160-1	676 (700-1)	1160-2	676 (700-2)
C CIRCLING	1200-1	699 (700-1)	1340-2 3/4	839 (900-2 3/4)

SE-1, 25 FEB 2021 to 25 MAR 2021

SE-1, 25 FEB 2021 to 25 MAR 2021