

WAAS CH 60935 W18A	APP CRS 177°	Rwy Idg TDZE Apt Elev	3998 415 415
--	------------------------	-----------------------------	---

RNAV (GPS) RWY 18

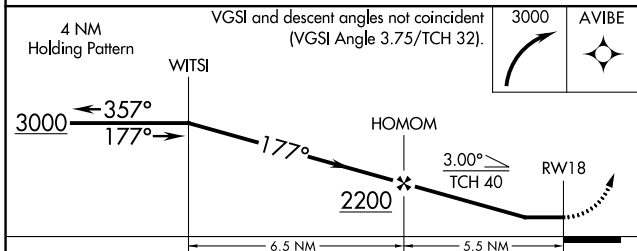
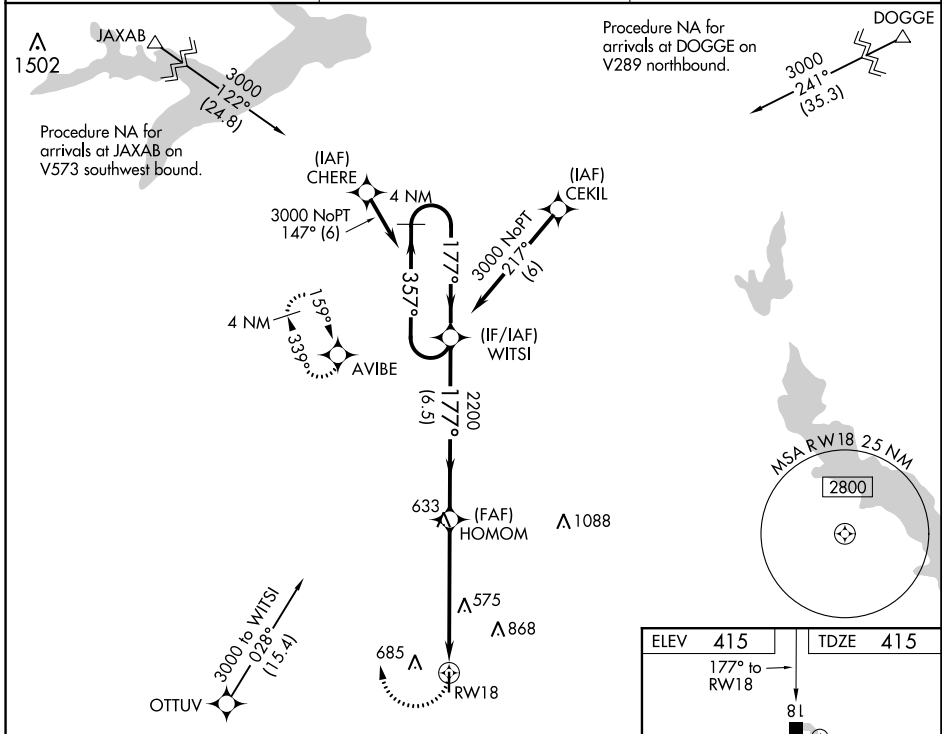
FOX STEPHENS FIELD-GILMER MUNI (JXI)

RNP APCH.

▼ Rwy 18 helicopter visibility reduction below 1 SM NA. When local altimeter setting not received, use Longview altimeter setting and increase all MDA 60 feet and all Cat C visibilities ¼ mile. Procedure NA at night.

▲ MISSED APPROACH: Climbing right turn to 3000 direct AVIBE and hold.

AWOS-3 118.2	LONGVIEW APP CON * 124.275 257.975	CTAF 122.9
------------------------	--	----------------------



ELEV 415	TDZE 415
177° to RWY 18	

81

3998 x 60

36

MRL Rwy 18-36

CATEGORY	A	B	C	D
LP MDA	820-1	405 (500-1)	820-1 $\frac{1}{8}$ 405 (500-1 $\frac{1}{8}$)	NA
LNAV MDA	880-1	465 (500-1)	880-1 $\frac{3}{8}$ 465 (500-1 $\frac{3}{8}$)	NA
C CIRCLING	1000-1 585 (600-1)	1060-1 645 (700-1)	1180-2 $\frac{1}{4}$ 765 (800-2 $\frac{1}{4}$)	NA

SC-2, 25 FEB 2021 to 25 MAR 2021

SC-2, 25 FEB 2021 to 25 MAR 2021