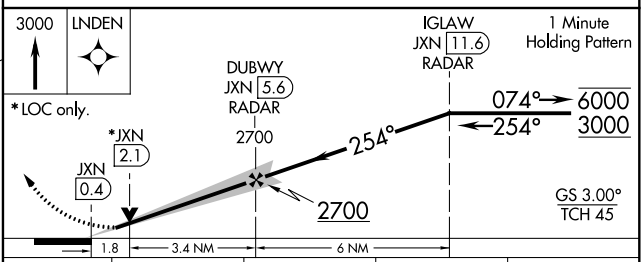
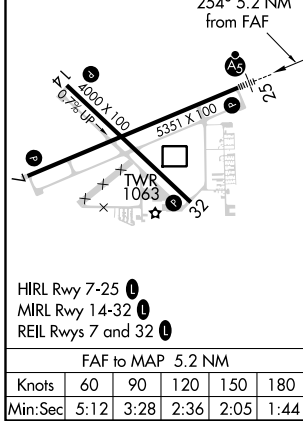
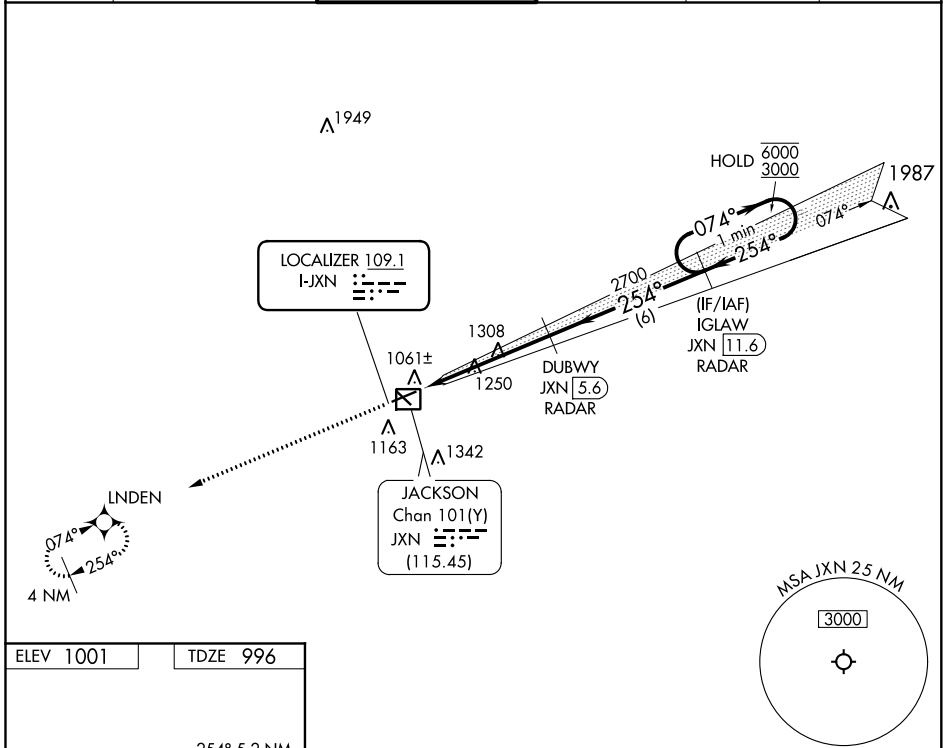


LOC I-JXN 109.1	APP CRS 254°	Rwy Idg TDZE Apt Elev	5351 996 1001
---------------------------	------------------------	-----------------------------	--

ILS or LOC RWY 25

JACKSON COUNTY-REYNOLDS FIELD (JXN)

RNAV-1 GPS required. RADAR required for procedure entry. DME or RADAR required.		MALSR	MISSED APPROACH: Climb to 3000 direct LNDEN and hold.		
For inop ALS, increase S-LOC 25 Cat C/D visibility to 1 3/4 SM.					
ATIS 125.725	GREAT LAKES APP CON * 127.3 335.575	JACKSON TOWER * 128.475(CTAF) 0 257.8	GND CON 121.9	CLNC DEL 121.9	UNICOM 122.95



CATEGORY	A	B	C	D
S-ILS 25	1196-1/2		200 (200-1/2)	
S-LOC 25	1620-1/2	624 (700-1/2)	1620-1 3/8	624 (700-1 3/8)
CIRCLING	1620-1	619 (700-1)	1660-1 3/4 659 (700-1 3/4)	1660-2 659 (700-2)

EC-1, 25 FEB 2021 to 25 MAR 2021

EC-1, 25 FEB 2021 to 25 MAR 2021