


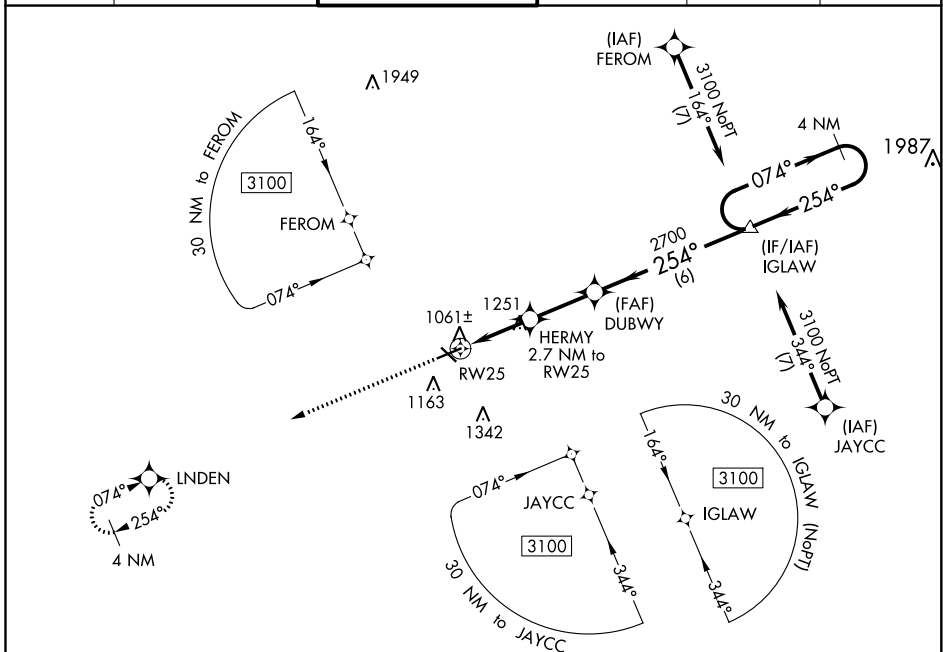
WAAS CH 86341 W25A	APP CRS 254°	Rwy ldg TDZE Apt Elev	5351 995 1001
---------------------------------	------------------------	-----------------------------	--

RNAV (GPS) RWY 25

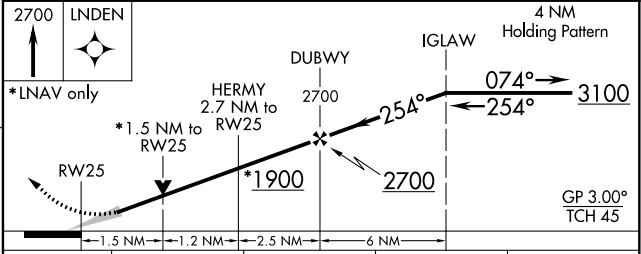
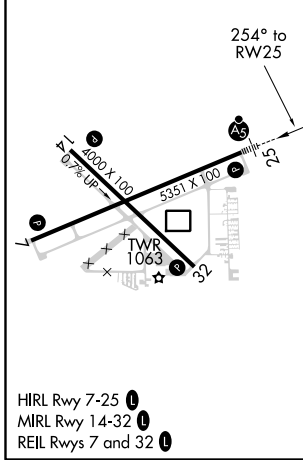
JACKSON COUNTY-REYNOLDS FIELD (JXN)

<p>For uncompensated Baro-VNAV systems, LNAV/VNAV NA below -21°C (-5°F) or above 54°C (130°F). DME/DME RNP-0.3 NA. For inop ALS, increase LNAV/VNAV all Cats visibility to ¾ SM.</p>	<p>MALSR</p> 	<p>MISSED APPROACH: Climb to 2700 direct LNDEN and hold.</p>
	<p>ATIS: 125.725 GREAT LAKES APP CON: 127.3 335.575 JACKSON TOWER: 128.475 (CTAF) 257.8 GND CON: 121.9 CLNC DEL: 121.9 UNICOM: 122.95</p>	

ATIS	GREAT LAKES APP CON	JACKSON TOWER	GND CON	CLNC DEL	UNICOM
125.725	127.3 335.575	128.475 (CTAF) 257.8	121.9	121.9	122.95



ELEV 1001	TDZE 995
-----------	----------



CATEGORY	A	B	C	D
LPV DA		1195-½	200 (200-½)	
LNAV/VNAV DA		1278-½	283 (300-½)	
LNAV MDA	1520-¾	525 (600-¾)	1520-1	525 (600-1)
<input checked="" type="checkbox"/> CIRCLING	1520-1	519 (600-1)	1660-1¾ 659 (700-1¾)	1660-2 659 (700-2)

EC-1, 25 FEB 2021 to 25 MAR 2021

EC-1, 25 FEB 2021 to 25 MAR 2021