

| | | |
|---------------------------------|------------------------|---|
| WAAS CH 58138 W15A | APP CRS 148° | Rwy Idg 3999 TDZE 1067 Apt Elev 1067 |
|---------------------------------|------------------------|---|

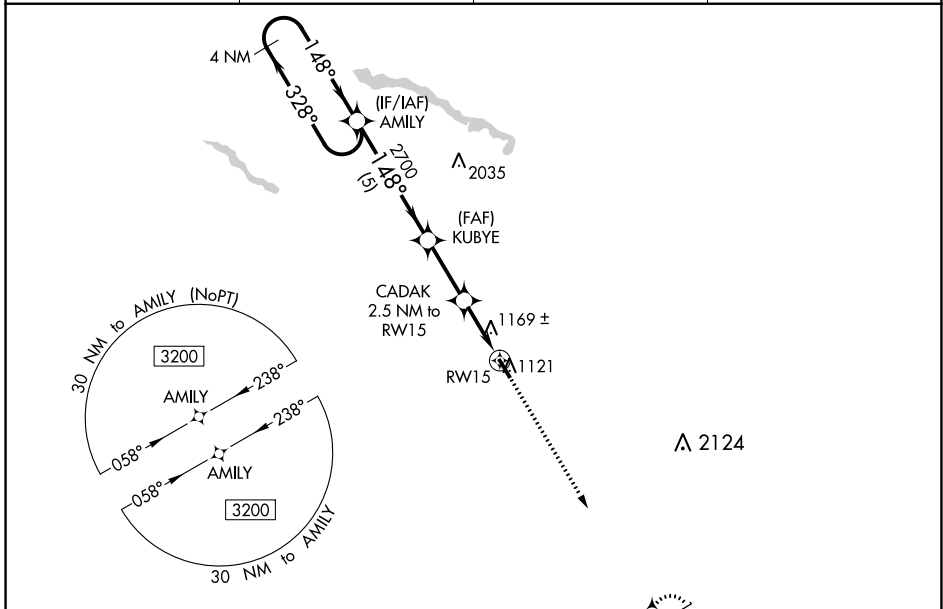
RNAV (GPS) RWY 15

ST JAMES MUNI (JYG)

⚠ DME/DME RNP-0.3 NA. For uncompensated Baro-VNAV systems, procedure NA below -17°C (2°F) or above 54°C (130°F). Baro-VNAV and VDP NA when using New Ulm altimeter setting. When local altimeter not received, use New Ulm, MN altimeter setting and increase LPV DA to 1372 feet and LNAV/VNAV DA to 1530 feet, and all MDA 60 feet.

MISSED APPROACH: Climb to 3200 direct PUGJU and hold.

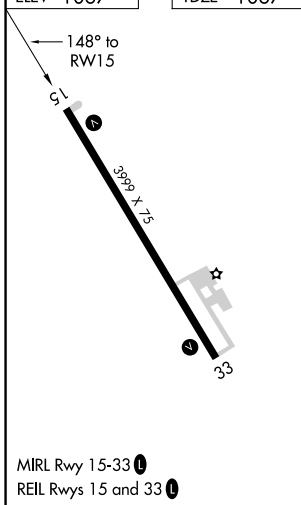
| | | | |
|------------------------|---|-----------------------|-------------------------------|
| AWOS-3 123.7 | MINNEAPOLIS CENTER 127.75 257.7 | GCO 121.725 | CTAF 122.9 ⓪ |
|------------------------|---|-----------------------|-------------------------------|



NC-1, 25 FEB 2021 to 25 MAR 2021

NC-1, 25 FEB 2021 to 25 MAR 2021

| | |
|-----------|-----------|
| ELEV 1067 | TDZE 1067 |
|-----------|-----------|



VGSI and descent angles not coincident (VGSI Angle 3.00/TCH 24).

| | | | | |
|----------------------|------------------------------------|--|----------------------|------|
| 4 NM Holding Pattern | AMILY | KUBYE | CADAK 2.5 NM to RW15 | RW15 |
| 3200 | 3200 | 2700 | 1880 | 1880 |
| GP 3.00° | | | | |
| TCH 40 | | | | |
| | 5 NM | 2.5 NM | 1.4 | 1.1 |
| CATEGORY | A | B | C | D |
| LPV DA | 1317-1 | 250 (300-1) | | NA |
| LNAV/VNAV DA | 1475-1 ³ / ₈ | 408 (500-1 ³ / ₈) | | NA |
| LNAV MDA | 1420-1 | 353 (400-1) | | NA |
| ⓐ CIRCLING | 1500-1 433 (500-1) | 1520-1 453 (500-1) | | NA |

3200 PUGJU

* LNAV only