

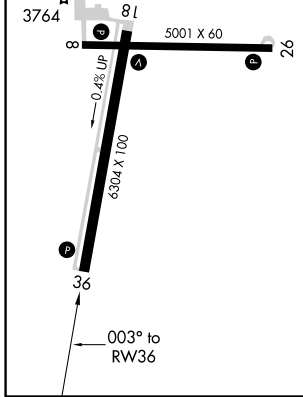
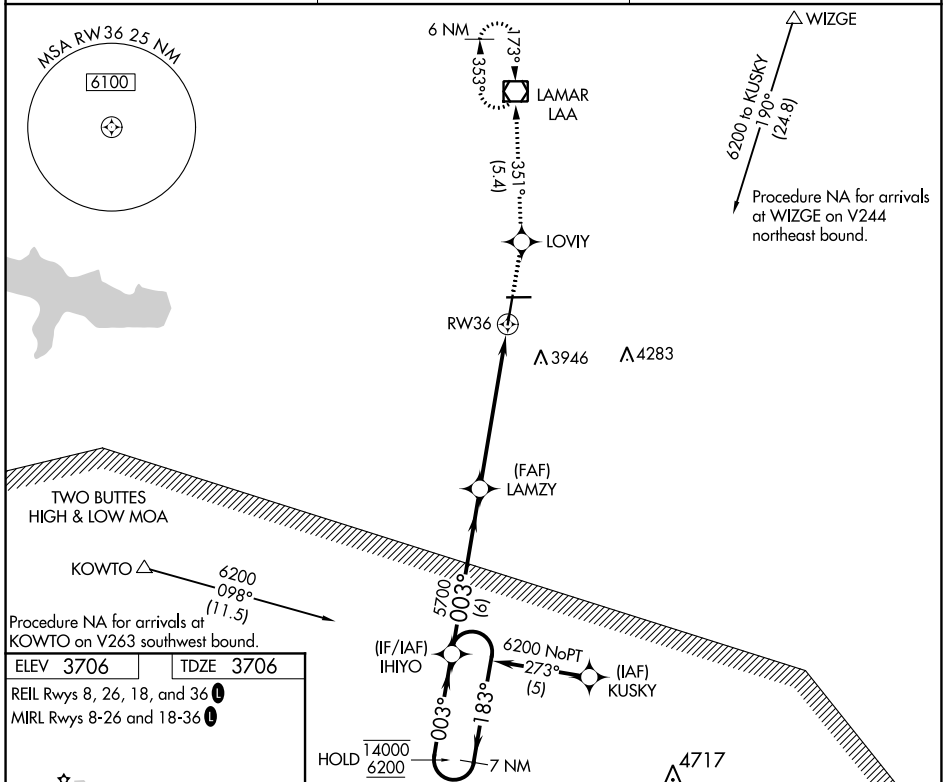
WAAS CH <b>99400</b> <b>W36A</b>	APP CRS <b>003°</b>	Rwy Idg TDZE Apt Elev	<b>6304</b> <b>3706</b> <b>3706</b>
--	------------------------	-----------------------------	---

# RNAV (GPS) RWY 36

SOUTHEAST COLORADO RGNL (L.A.A)

RNP APCH.	MISSED APPROACH: Climb to 6000 direct LOVIY and left turn on track 351° to LAA VOR/DME and hold.
<p>▼ Rwy 36 helicopter visibility reduction below 3/4 SM NA. For uncompensated</p> <p>▲ Baro-VNAV systems, LNAV/VNAV NA below -22°C or above 54°C.</p>	

ASOS <b>135.625</b>	DENVER CENTER <b>133.4 377.175</b>	UNICOM <b>122.8 (CTAF)</b>
------------------------	---------------------------------------	-------------------------------



VGSIs and RNAV glidepath not coincident (VGSi Angle 3.00/TCH 45).		6000	LOVIY	LAA
7 NM Holding Pattern IHIYO		↑	✦	◻
LAMZY		tr 351°		
		*2 NM to RW36		*LNAV only.
RW36				
CATEGORY	A	B	C	D
LPV DA	3956-1		250 (300-1)	
LNAV/VNAV DA	4250-2		544 (600-2)	
LNAV MDA	4400-1	694 (700-1)	4400-2 694 (700-2)	4400-2¼ 694 (700-2¼)

SW-1, 25 FEB 2021 to 25 MAR 2021

SW-1, 25 FEB 2021 to 25 MAR 2021