

WAAS Ch 45902 W10A	APP CRS 100°	Rwy Idg TDZE Apt Elev	6600 601 606
--	------------------------	-----------------------------	---

RNAV (GPS) RWY 10

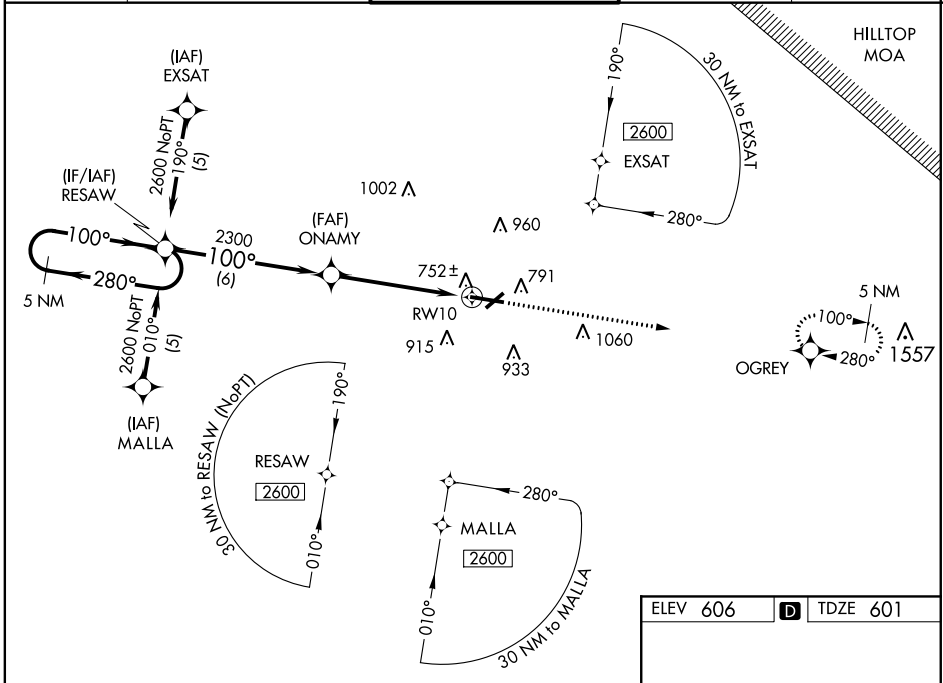
PURDUE UNIVERSITY (LAF)

⚠ If local altimeter setting not received, use Vermilion Rgnl altimeter setting and increase all DAs 89 feet, all MDAs 100 feet. Baro-VNAV NA when using Vermilion Rgnl altimeter setting. VDP NA when using Vermilion Rgnl altimeter setting. For uncompensated Baro-VNAV systems, LNAV/VNAV NA below -16°C (4°F) or above 47°C (116°F). For inoperative MALSR, increase LPV all Cats visibility to 1 mile. DME/DME RNP-0.3 NA. Circling Rwy 23 NA at night.



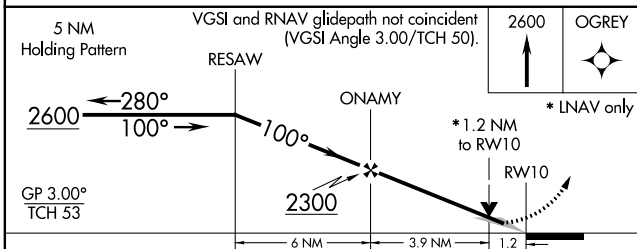
MISSED APPROACH: Climb to 2600 direct OGREY and hold.

ATIS 127.75	GRISSOM APP CON* 123.85 291.675	LAFAYETTE TOWER* 119.6 (CTAF) 0 393.0	GND CON 121.9 393.0	UNICOM 122.95
-----------------------	---	---	-------------------------------	-------------------------

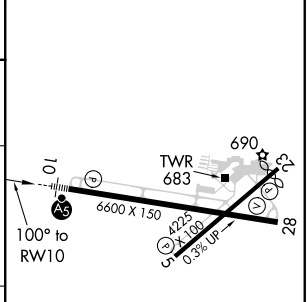


EC-2, 25 FEB 2021 to 25 MAR 2021

EC-2, 25 FEB 2021 to 25 MAR 2021



ELEV 606	D TDZE 601
----------	-------------------



CATEGORY	A	B	C	D
LPV DA		877-½	276 (300-½)	
LNAV/VNAV DA		1083-1¼	482 (500-1¼)	
LNAV MDA	1040-½	439 (500-½)	1040-¾ 439 (500-¾)	1040-1 439 (500-1)
CIRCLING	1160-1	554 (600-1)	1160-1½ 554 (600-1½)	1320-2¼ 714 (800-2¼)

HIRL Rwy 10-28
 REIL Rwys 5, 23 and 28
 MIRL Rwy 5-23