

WAAS CH 77805 W23A	APP CRS 229°	Rwy Idg TDZE 141 Apt Elev 142
--	------------------------	---

RNAV (GPS) RWY 23

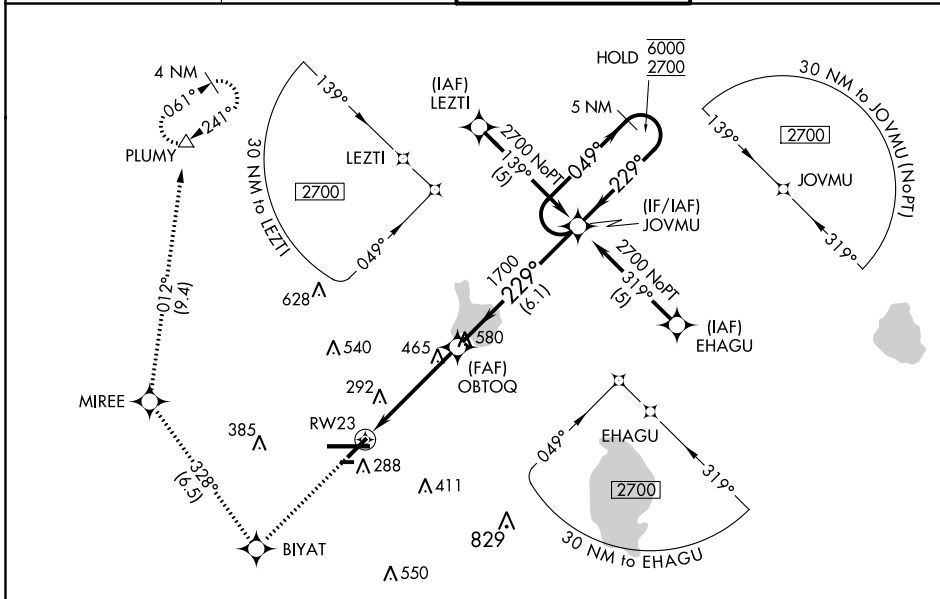
LAKELAND LINDER INTL (LAL)

RNP APCH.

▼ For uncompensated Baro-VNAV systems, LNAV/VNAV NA below -15°C or above 54°C.
 ▲ When local altimeter setting not received, use Plant City altimeter setting and increase all DA/MDA 20 feet and increase LNAV Cat C/D and Circling Cat C visibility 1/8 SM.
 Baro-VNAV and VDP NA when using Plant City altimeter setting. Rwy 23 helicopter visibility reduction below 3/4 SM NA. Circling NA to Rwy's 8 and 26.

MISSED APPROACH: Climb to 2000 direct BIYAT and right turn on track 328° to MIREE then on track 012° to PLUMY and hold.

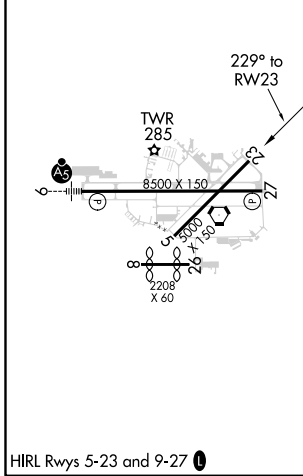
ATIS 118.025	TAMPA APP CON 120.65 290.3	LAKELAND TOWER 124.5 (CTAF) 236.775	GND CON 121.4
------------------------	--------------------------------------	---	-------------------------



SE-3, 25 FEB 2021 to 25 MAR 2021

SE-3, 25 FEB 2021 to 25 MAR 2021

ELEV 142	D	TDZE 141
-----------------	----------	-----------------



2000	BIYAT	MIREE	PLUMY	JOVMU	5 NM Holding Pattern
↑	↻ tr 328°	↻ tr 012°	△		
*LNAV only.					
	RWY 23	OBTOQ			
	1.7 NM	3 NM	6.1 NM		
		1700	229°	6000	2700
					GP 3.00° TCH 50
CATEGORY	A	B	C	D	
LPV DA		426-1	285 (300-1)		
LNAV/VNAV DA		480-1¼	339 (400-1¼)		
LNAV MDA	720-1	579 (600-1)	720-1½ 579 (600-1½)	720-1¾ 579 (600-1¾)	
CIRCLING	720-1	578 (600-1)	720-1½ 578 (600-1½)	720-2 578 (600-2)	