

WAAS CH 82605 W 27A	APP CRS 274°	Rwy Idg TDZE Apt Elev	8499 142 142
---	------------------------	-----------------------------	---

RNAV (GPS) RWY 27

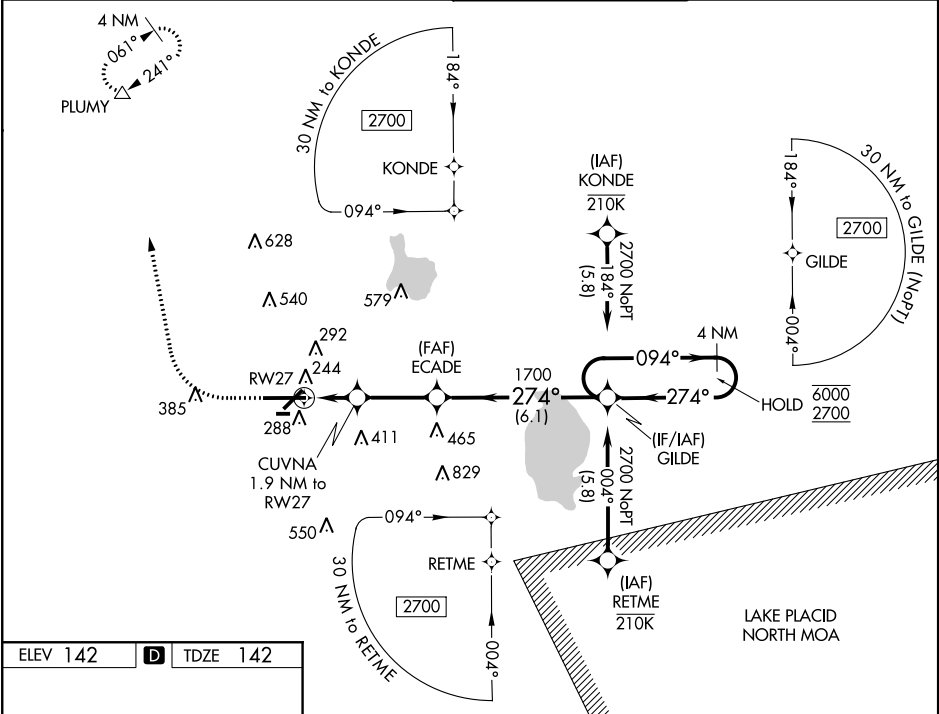
LAKELAND LINDER INTL (LAL)

RNP APCH.

▼ For uncompensated Baro-VNAV systems, LNAV/VNAV NA below -15°C or above 54°C.
 ▲ When local altimeter setting not received, use Plant City altimeter setting and increase all DA/MDA 20 feet, and increase LNAV/VNAV all Cais and LNAV Cais C/D visibility 1/8 SM.
 Baro-VNAV and VDP NA when using Plant City altimeter setting. Circling NA to Rwy's 8 and 26.

MISSED APPROACH: Climb to 1000 then climbing right turn to 2000 direct PLUMY and hold.

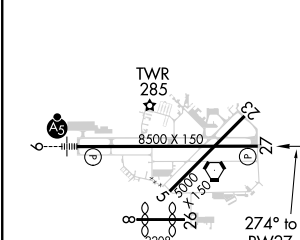
ATIS 118.025	TAMPA APP CON 120.65 290.3	LAKELAND TOWER 124.5 (CTAF) 0 236.775	GND CON 121.4
------------------------	--------------------------------------	---	-------------------------



SE-3, 25 FEB 2021 to 25 MAR 2021

SE-3, 25 FEB 2021 to 25 MAR 2021

ELEV 142	D	TDZE 142
----------	----------	----------



1000	2000	PLUMY
*LNAV only.		
CUVNA 1.9 NM to RW27	ECAD E 1700	GILDE 4 NM Holding Pattern
RW27	274°	6000 / 2700
1.1 NM	0.8	2.9 NM
GP 3.00° TCH 45		

CATEGORY	A	B	C	D
LPV DA		342-3/4	200 (200-3/4)	
LNAV/VNAV DA		455-1	313 (400-1)	
LNAV MDA	560-1	418 (500-1)	560-1 1/8	418 (500-1 1/8)
CIRCLING	600-1 458 (500-1)	660-1 518 (600-1)	660-1 1/2 518 (600-1 1/2)	700-2 558 (600-2)