

# RNAV (GPS) RWY 9

LAKELAND LINDER INTL (LAL)

WAAS CH <b>78305</b> <b>W09A</b>	APP CRS <b>094°</b>	Rwy Idg <b>8414</b> TDZE <b>132</b> Apt Elev <b>142</b>
--	------------------------	---

**RNP APCH:**

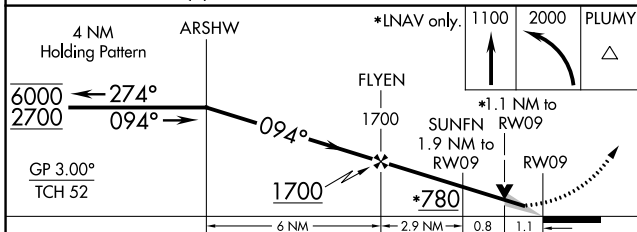
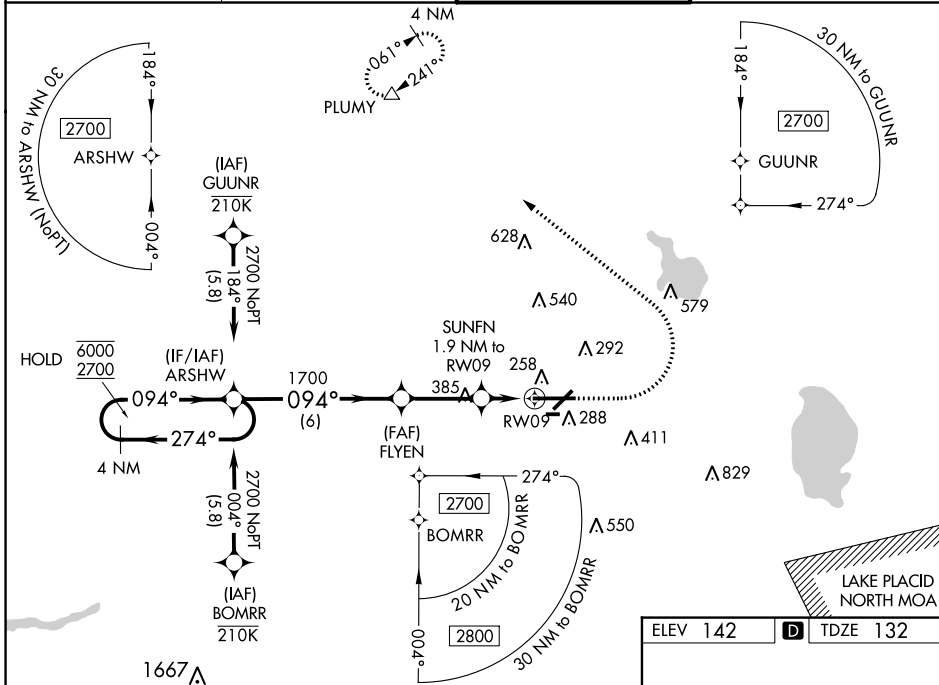
▼ For uncompensated Baro-VNAV systems, LNAV/VNAV NA below -15°C or above 54°C. Baro-VNAV and VDP NA when using Plant City altimeter setting. When local altimeter setting not received, use Plant City altimeter setting and increase all DA/MDA 20 feet, increase LNAV/VNAV all Cats visibility and LNAV Cats C/D visibility 1/8 SM. For inop ALS, increase LNAV/VNAV all Cats visibility to 1 1/8 SM. For inop ALS when using Plant City altimeter setting, increase LNAV/VNAV all Cats visibility to 1 SM. Circling NA to Rwy's 8 and 26.

MALSR

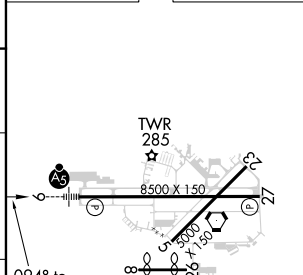


**MISSED APPROACH:**  
Climb to 1100 then climbing left turn to 2000 direct PLUMY and hold.

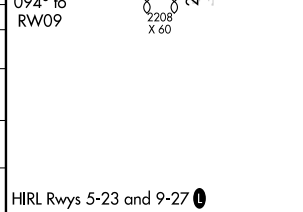
ATIS <b>118.025</b>	TAMPA APP CON <b>120.65 290.3</b>	LAKELAND TOWER <b>124.5 (CTAF) 236.775</b>	GND CON <b>121.4</b>
------------------------	--------------------------------------	---	-------------------------



ELEV 142	TDZE 132
----------	----------



CATEGORY	A	B	C	D
LPV DA		332-1/2	200 (200-1/2)	
LNAV/VNAV DA		439-1/2	307 (300-1/2)	
LNAV MDA	520-1/2	388 (400-1/2)	520-5/8	388 (400-5/8)
CIRCLING	600-1 458 (500-1)	660-1 518 (600-1)	660-1 1/2 518 (600-1 1/2)	700-2 558 (600-2)



SE-3, 25 FEB 2021 to 25 MAR 2021

SE-3, 25 FEB 2021 to 25 MAR 2021