

VORTAC LAL 116.0 Chan 107	APP CRS 096°	Rwy Idg 8414 TDZE 132 Apt Elev 142
---	------------------------	---

VOR RWY 9

LAKELAND LINDER INTL (LAL)

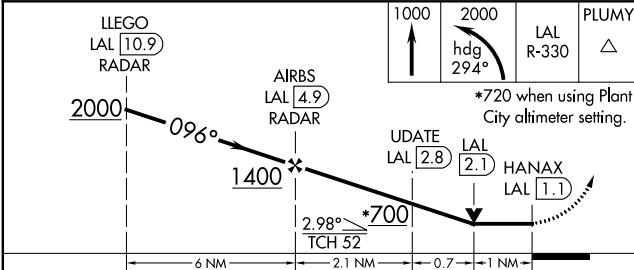
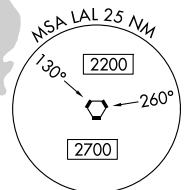
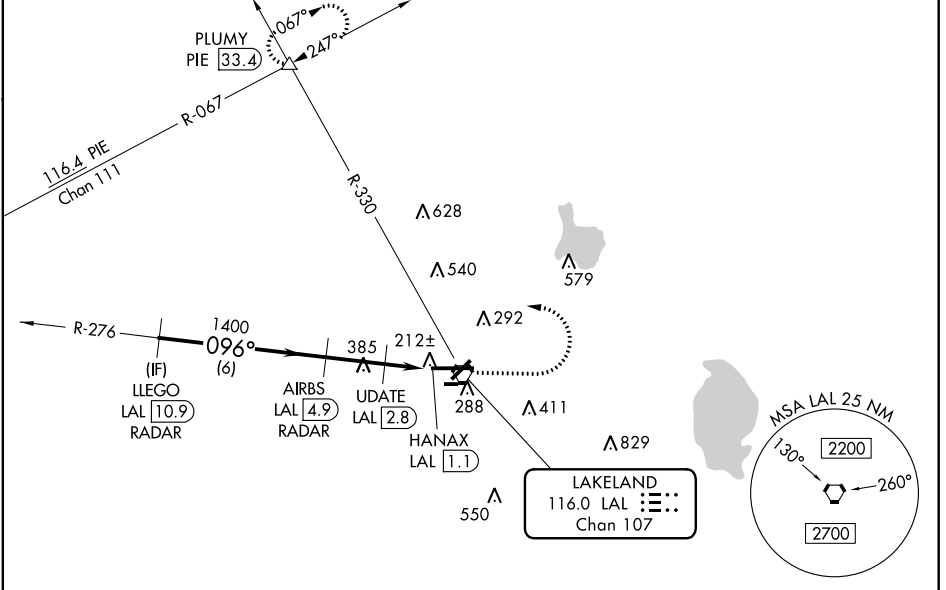
RADAR required for procedure entry. DME or RADAR required.

▼ When local altimeter setting not received, use Plant City altimeter setting and increase all MDA 20 feet; increase Circling Cat C visibility $\frac{1}{8}$ SM. VDP NA when using Plant City altimeter setting. For inop ALS, increase S-9 Cat C/D visibility to $1\frac{1}{8}$ SM; increase UDATE Fix Minimums S-9 Cat C/D visibility to $1\frac{3}{8}$ SM. For inop ALS when using Plant City altimeter setting, increase UDATE Fix Minimums S-9 Cat C/D visibility to $1\frac{1}{8}$ SM. Circling NA to Rwy 8 and 26.



MISSED APPROACH: Climb to 1000 then climbing left turn to 2000 on heading 294° and on LAL VORTAC R-330 to PLUMY INT/PIE 33.4 DME and hold.

ATIS 118.025	TAMPA APP CON 120.65 290.3	LAKELAND TOWER 124.5 (CTAF) 236.775	GND CON 121.4
------------------------	--------------------------------------	---	-------------------------



CATEGORY	A	B	C	D
S-9	700- $\frac{1}{2}$	568 (600- $\frac{1}{2}$)	700- $\frac{1}{4}$	568 (600- $\frac{1}{4}$)
CIRCLING	700-1	558 (600-1)	700- $\frac{1}{2}$ 558 (600- $\frac{1}{2}$)	700-2 558 (600-2)
UPDATE FIX MINIMUMS				
S-9	500- $\frac{1}{2}$	368 (400- $\frac{1}{2}$)	500- $\frac{3}{4}$	368 (400- $\frac{3}{4}$)
CIRCLING	600-1 458 (500-1)	660-1 518 (600-1)	660- $\frac{1}{2}$ 518 (600- $\frac{1}{2}$)	700-2 558 (600-2)

ELEV 142 D TDZE 132

096° 3.8 NM from FAF

HIRL Rwy 5-23 and 9-27 D					
FAF to MAP 3.8 NM					
Knots	60	90	120	150	180
Min:Seq	3:48	2:32	1:54	1:31	1:16

SE-3, 25 FEB 2021 to 25 MAR 2021

SE-3, 25 FEB 2021 to 25 MAR 2021