

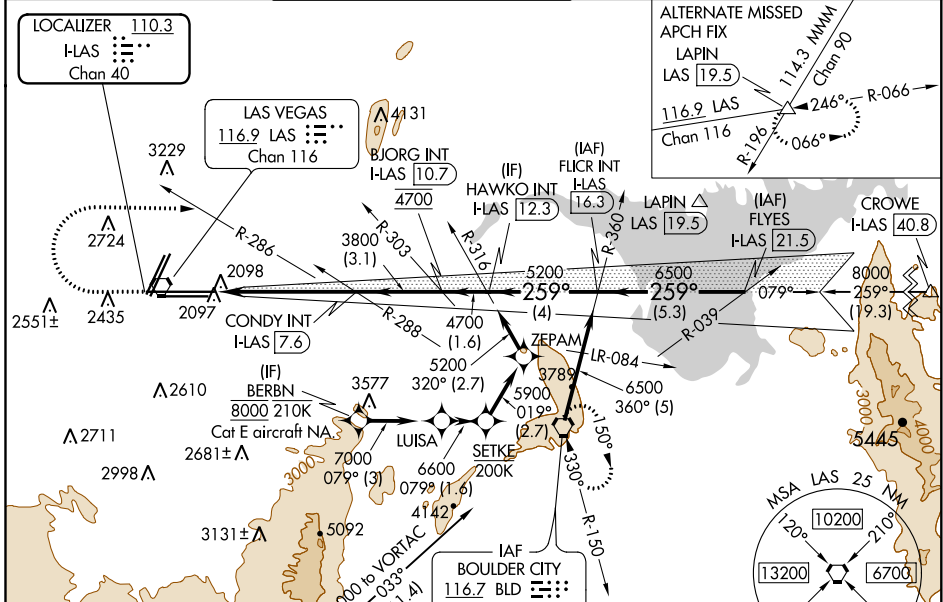
LOC/DME I-LAS <b>110.3</b> Chan 40	APP CRS <b>259°</b>	Rwy Idg TDZE Apt Elev	<b>26R 12639</b> <b>26L 10525</b> <b>2067 2069</b> <b>2181 2181</b>
--	------------------------	-----------------------------	--

# I LS or LOC RWY 26R

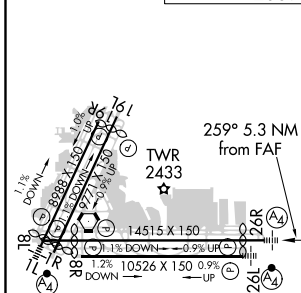
MC CARRAN INTL (LAS)

From BERBN: RNP APCH - GPS required.		MALS Rwy 26R	MALS Rwy 26L	MISSED APPROACH: Climb to 3200 then climbing right turn to 6000 on heading 080° and BLD R-286 to BLD VORTAC and hold, continue climb-in-hold to 6000.
For inop ALS, increase S-ILS-26R all Cats visibility to ¾ SM, S-LOC-26R Cat E visibility to 1¾ SM. Inop table does not apply to Sidestep Rwy 26L.				

D-ATIS <b>132.4</b>	LAS VEGAS APP CON <b>125.025 379.15</b> (West) <b>125.6 282.2</b> (East)	LAS VEGAS TOWER <b>118.75 257.8</b> (Rwy 1L/19R, 1R/19L) <b>119.9 257.8</b> (Rwy 8L/26R, 8R/26L)	GND CON <b>121.1 270.8</b> E of 1R/19L <b>121.9 254.3</b> W of 1R/19L	CLNC DEL <b>118.0</b>	CPDLC
------------------------	--	--	---	--------------------------	-------



ELEV 2181	TDZE 26R 2067	TDZE 26L 2069
-----------	---------------	---------------



<p><b>CONDY INT I-LAS [7.6]</b></p> <p><b>BJORG INT I-LAS [10.7]</b></p> <p><b>HAWKO INT I-LAS [12.3]</b></p> <p><b>FLICR INT I-LAS [16.3]</b></p> <p><b>FLYES I-LAS [21.5]</b></p>	<p><b>8000</b></p> <p><b>259°</b></p> <p><b>6500</b></p> <p><b>5200</b></p> <p><b>4700</b></p> <p><b>3800</b></p> <p>See planview for multiple IF locations.</p>
---	--

CATEGORY	A	B	C	D	E
S-ILS 26R	2334-¾ 267 (200-¾)				
S-LOC 26R	2560-¾ 493 (400-¾)	2560-1½ 493 (400-1½)			
SIDESTEP 26L	2560-1 491 (400-1)	2560-1½ 491 (400-1½)	2560-2 491 (400-2)		
CIRCLING	3020-1¼ 839 (900-1¼)	3060-1¼ 879 (900-1¼)	3100-2¾ 919 (1000-2¾)	3540-3 1359 (1400-3)	

SW-4, 25 FEB 2021 to 25 MAR 2021

SW-4, 25 FEB 2021 to 25 MAR 2021