

RATPK ONE DEPARTURE (RNAV)

AL-662 (FAA)

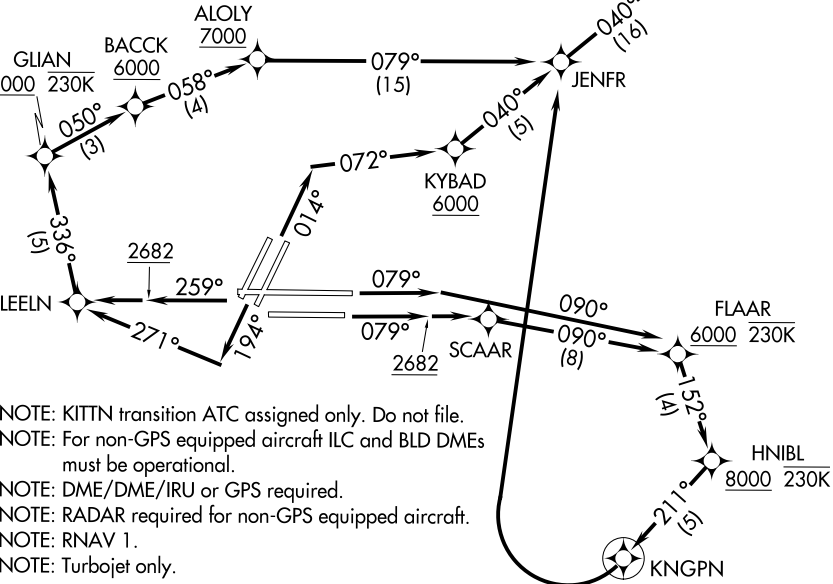
MC CARRAN INTL (LAS)
LAS VEGAS, NEVADA

**TOP ALTITUDE:
FL190**

D-ATIS
132.4
CLNC DEL
118.0
CPDLC
GND CON
121.1 270.8 E of 1R/19L
121.9 254.3 W of 1R/19L
LAS VEGAS TOWER
118.75 257.8 (Rwys 1L/19R, 1R/19L)
119.9 257.8 (Rwys 8L/26R, 8R/26L)
LAS VEGAS DEP CON
125.9 307.25 (Rwys 8L/R)
133.95 353.7 (Rwys 1L/R, 19L/R, 26L/R)

TAKEOFF MINIMUMS

- Rwys 1L/R: Standard with minimum climb of 500' per NM to 2682 then 280' per NM to 4800.
- Rwys 8L/R: Standard with minimum climb of 500' per NM to 2682 then 233' per NM to 6400.
- Rwys 19L/R: Standard with minimum climb of 500' per NM to 2682 then 230' per NM to 4200.
- Rwys 26L/R: Standard with a minimum climb of 500' per NM to 2682 then 240' per NM to 4200.



(NARRATIVE ON FOLLOWING PAGE)

NOTE: Chart not to scale.

RATPK ONE DEPARTURE (RNAV)

SW-4, 25 FEB 2021 to 25 MAR 2021

SW-4, 25 FEB 2021 to 25 MAR 2021