

| | |
|-------------|----------------------|
| APP CRS | Rwy Idg 10525 |
| 079° | TDZE 2157 |
| | Apt Elev 2181 |

RNAV (RNP) RWY 8R

MC CARRAN INTL (LAS)

RNP AR APCH. RF required.

MISSED APPROACH: Climb to 7000 on the RNAV missed approach route to VMPRE and hold, continue climb-in-hold to 7000.

▼ For uncompensated Baro-VNAV systems, procedure NA below 0°C or above 54°C.

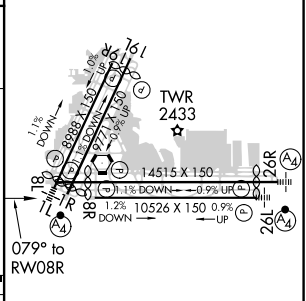
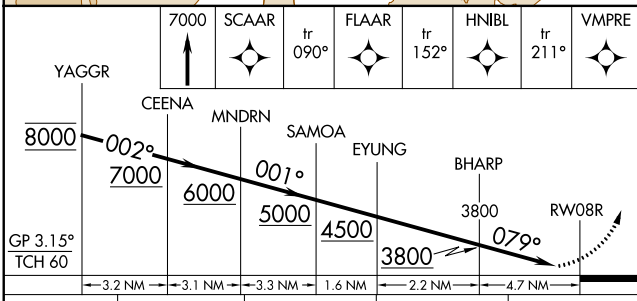
| | | | | | |
|--------------|---|---|--|--------------|-------|
| D-ATIS | LAS VEGAS APP CON | LAS VEGAS TOWER | GND CON | CLNC DEL | CPDLC |
| 132.4 | 125.025 379.15 (West) 125.6 282.2 (East) | 118.75 257.8 (Rwy 1L/19R, 1R/19L) 119.9 257.8 (Rwy 8L/26R, 8R/26L) | 121.1 270.8 E of 1R/19L 121.9 254.3 W of 1R/19L | 118.0 | |



SW-4, 25 FEB 2021 to 25 MAR 2021

SW-4, 25 FEB 2021 to 25 MAR 2021

| | |
|-----------|--------------------|
| ELEV 2181 | D TDZE 2157 |
|-----------|--------------------|



| | | | | |
|-------------|---|------------|-----------------|---|
| CATEGORY | A | B | C | D |
| RNP 0.10 DA | | 2544-1 1/8 | 387 (400-1 1/8) | |
| RNP 0.30 DA | | 2613-1 3/8 | 456 (500-1 3/8) | |

AUTHORIZATION REQUIRED

MIRL Rwy 1R-19L
REIL Rwsy 1R, 8R, 19L and 19R
HIRL Rwsy 1L-19R, 8L-26R and 8R-26L