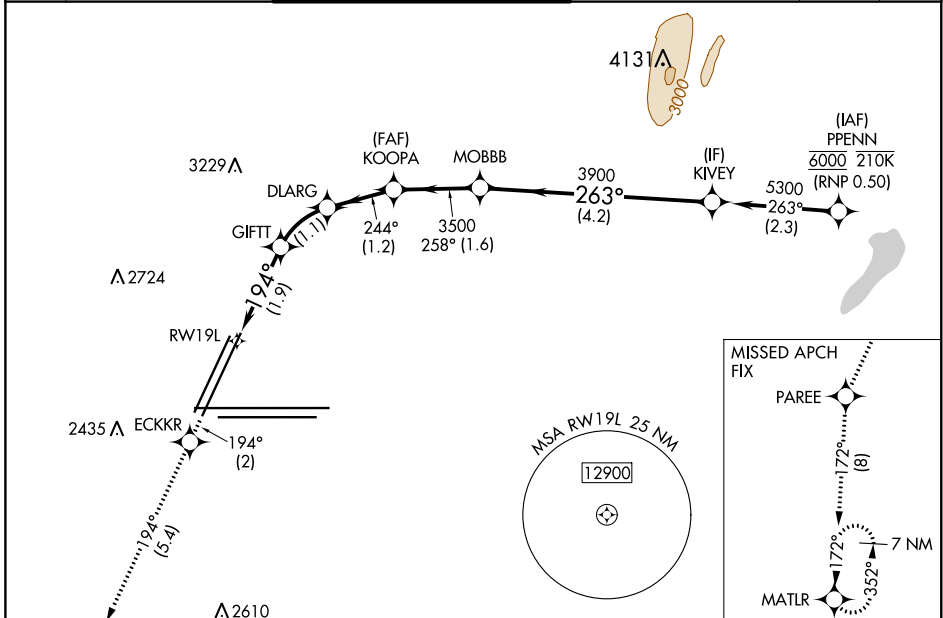


APP CRS	Rwy ldg	8803
194°	TDZE	2112
	Apt Elev	2181

RNAV (RNP) Z RWY 19L

MC CARRAN INTL (LAS)

RNP AR APCH. RF required.		MISSED APPROACH: Climb to 7000 on the RNAV missed approach route to MATLR and hold, continue climb-in-hold to 7000.		
<p>▼ For uncompensated Baro-VNAV systems, procedure NA below 0°C or above 54°C. Missed approach requires RNP less than 1.0.</p>		<p>*Missed approach requires minimum climb of 225 feet per NM to 5000.</p>		
D-ATIS	LAS VEGAS APP CON	LAS VEGAS TOWER	GND CON	CLNC DEL
132.4	125.025 379.15 (West) 125.6 282.2 (East)	118.75 257.8 (Rwy 1L/19R, 1R/19L) 119.9 257.8 (Rwy 8L/26R, 8R/26L)	121.1 270.8 E of 1R/19L 121.9 254.3 W of 1R/19L	118.0
				CPDLC



ELEV 2181	TDZE 2112	7000	ECKKR	PAREE	MATLR	KIVEY																									
		↑	tr 194°	tr 194°	tr 172°																										
		<table border="1"> <tr> <th>CATEGORY</th> <th>A</th> <th>B</th> <th>C</th> <th>D</th> </tr> <tr> <td>RNP 0.10 DA*</td> <td colspan="4">2470-1 358 (300-1)</td> </tr> <tr> <td>RNP 0.20 DA*</td> <td colspan="4">2488-1 376 (400-1)</td> </tr> <tr> <td>RNP 0.30 DA*</td> <td colspan="4">2512-1½ 400 (400-1½)</td> </tr> <tr> <td>RNP 0.30 DA</td> <td colspan="4">2582-1¾ 470 (500-1¾)</td> </tr> </table>				CATEGORY	A	B	C	D	RNP 0.10 DA*	2470-1 358 (300-1)				RNP 0.20 DA*	2488-1 376 (400-1)				RNP 0.30 DA*	2512-1½ 400 (400-1½)				RNP 0.30 DA	2582-1¾ 470 (500-1¾)				
CATEGORY	A	B	C	D																											
RNP 0.10 DA*	2470-1 358 (300-1)																														
RNP 0.20 DA*	2488-1 376 (400-1)																														
RNP 0.30 DA*	2512-1½ 400 (400-1½)																														
RNP 0.30 DA	2582-1¾ 470 (500-1¾)																														
AUTHORIZATION REQUIRED																															

SW-4, 25 FEB 2021 to 25 MAR 2021

SW-4, 25 FEB 2021 to 25 MAR 2021