

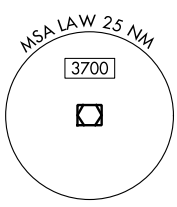
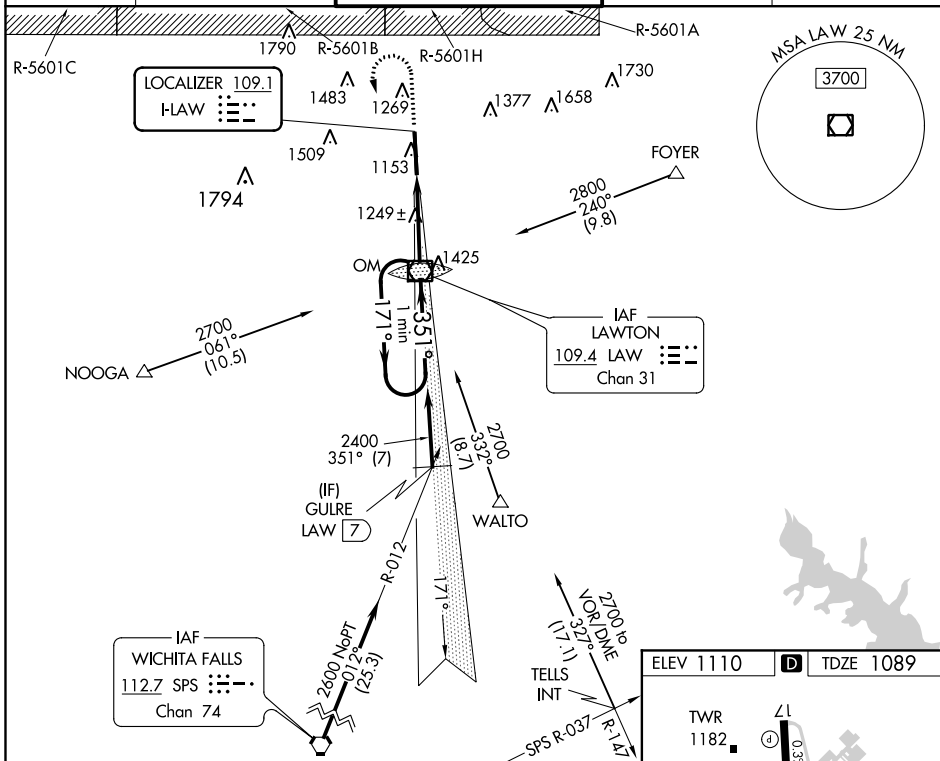
LOC I-LAW 109.1	APP CRS 351°	Rwy Idg 8599	TDZE 1089	Apt Elev 1110
---------------------------	------------------------	------------------------	---------------------	-------------------------

ILS or LOC RWY 35

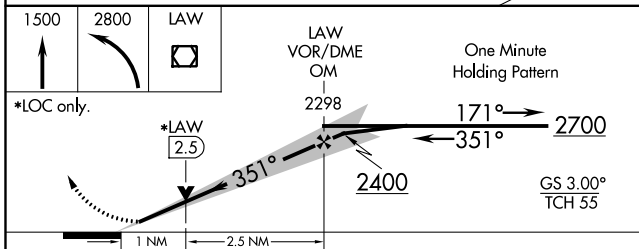
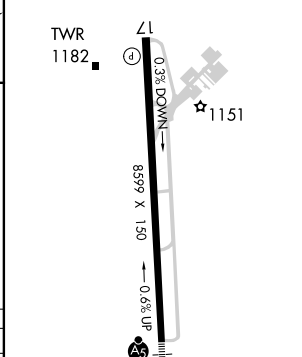
LAWTON-FORT SILL RGNL (LAW)

<p>ASR</p> <p>Autopilot coupled approach NA below 2000. For inop ALS, increase S-LOC 35 Cat C/D visibility to 1 1/8 SM</p>	<p>MALSR</p>	<p>MISSED APPROACH: Climb to 1500 then climbing left turn to 2800 direct LAW VOR/DME, continue climb-in-hold to 2800.</p>
---	---------------------	--

ATIS 120.75	FORT SILL APP CON 120.55 322.4	LAWTON TOWER * 119.9(CTAF) 257.8	GND CON 121.9	UNICOM 122.95
-----------------------	--	--	-------------------------	-------------------------



ELEV 1110	D	TDZE 1089
-----------	----------	-----------



CATEGORY	A	B	C	D
S-ILS 35	1289-1/2		200 (200-1/2)	
S-LOC 35	1500-1/2	411 (400-1/2)	1500-3/4	411 (400-3/4)
C CIRCLING	1620-1	510 (600-1)	1820-2	1820-2 1/4
			710 (800-2)	710 (800-2 1/4)

REIL Rwy 17				
HIRL Rwy 17-35				
FAF to MAP 3.5 NM				
Knots	60	90	120	150
Min:Sec	3:30	2:20	1:45	1:24
			1:10	

SC-1, 25 FEB 2021 to 25 MAR 2021

SC-1, 25 FEB 2021 to 25 MAR 2021