

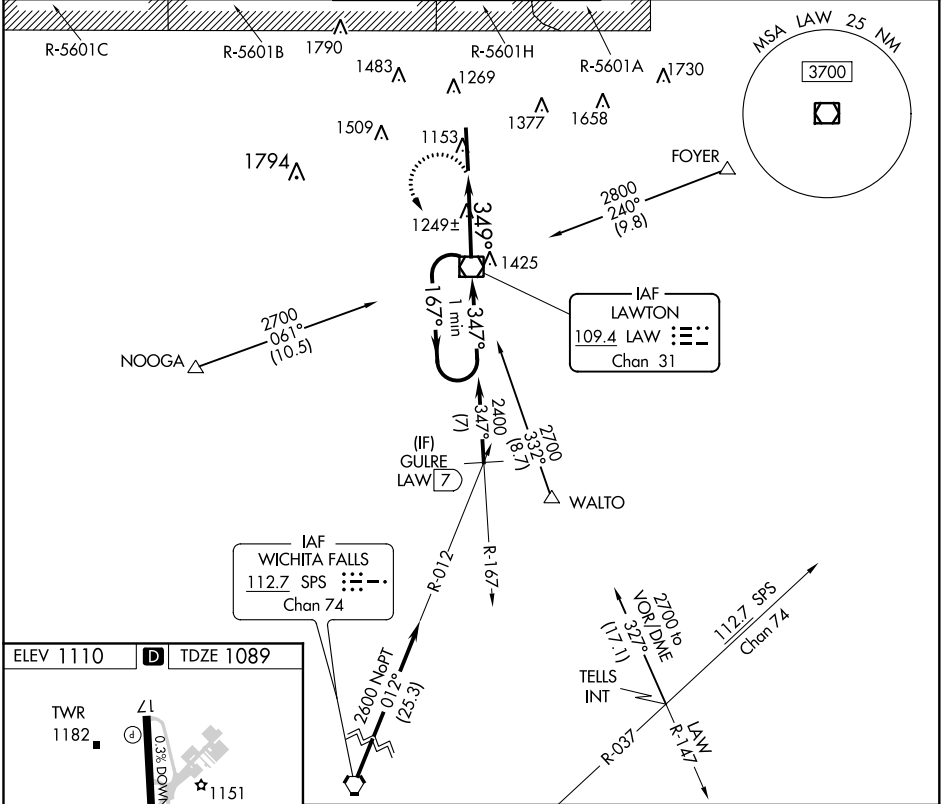
VOR/DME LAW <b>109.4</b> Chan <b>31</b>	APP CRS <b>349°</b>	Rwy Idg <b>8599</b> TDZE <b>1089</b> Apt Elev <b>1110</b>
---	------------------------	---

# VOR RWY 35

LAWTON-FORT SILL RGNL (LAW)

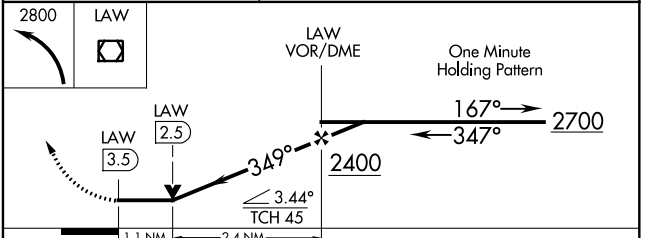
For inop ALS, increase Cat C/D visibility to 1½ SM. ASR	MALS	MISSED APPROACH: Climbing left turn to 2800 direct LAW VOR/DME and hold, continue climb-in-hold to 2800.
--	------	--

ATIS <b>120.75</b>	FORT SILL APP CON <b>120.55 322.4</b>	LAWTON TOWER * <b>119.9</b> (CTAF) <b>257.8</b>	GND CON <b>121.9</b>	UNICOM <b>122.95</b>
-----------------------	--	--	-------------------------	-------------------------



ELEV 1110 **D** TDZE 1089

Knots	60	90	120	150	180
Min:Sec	3:30	2:20	1:45	1:24	1:10



CATEGORY	A	B	C	D
S-35	1500-½ 411 (500-½)		1500-¾ 411 (500-¾)	
<input checked="" type="checkbox"/> CIRCLING	1620-1 510 (600-1)		1820-2 710 (800-2)	1820-2¼ 710 (800-2¼)

SC-1, 25 FEB 2021 to 25 MAR 2021

SC-1, 25 FEB 2021 to 25 MAR 2021