

LOC/DME I-MKZ 109.9 Chan 36	APP CRS 071°	Rwy Idg 7R 11095 11259 7L 11095 11259
		TDZE 128 128
		Apt Elev 128 128

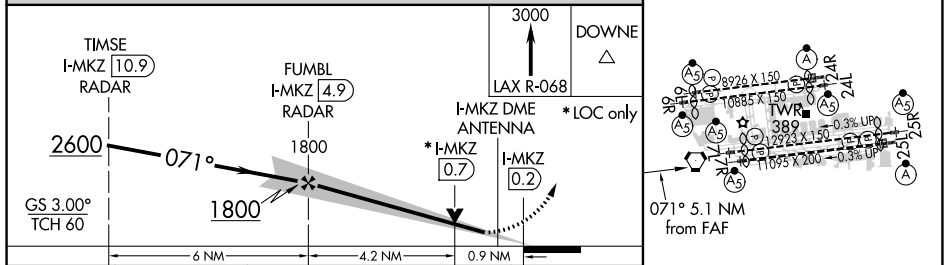
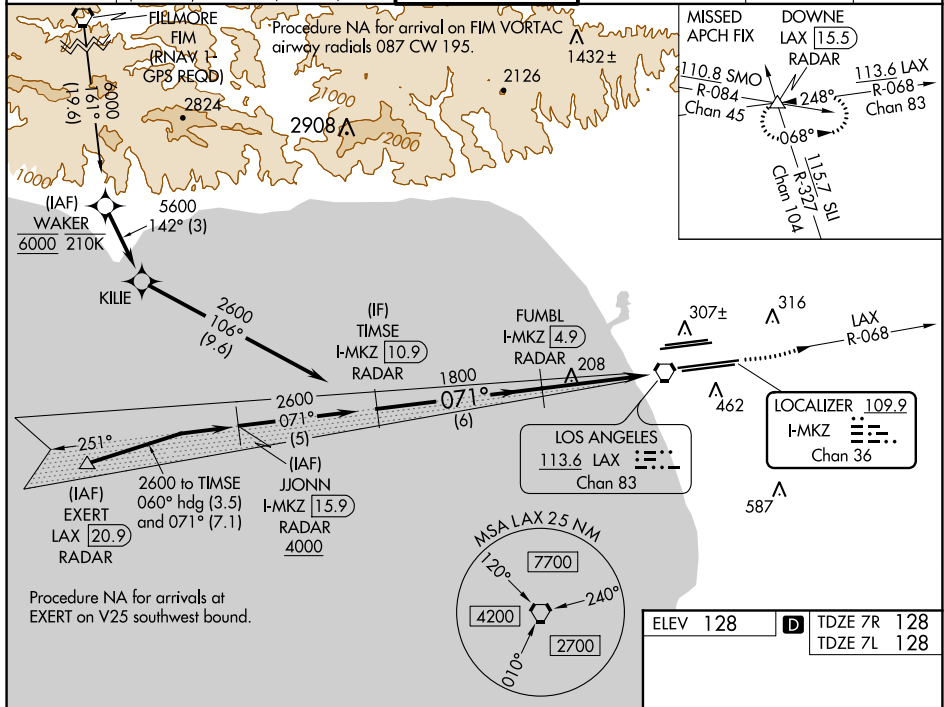
ILS or LOC RWY 7R

LOS ANGELES INTL (LAX)

Simultaneous approach authorized. DME or RADAR required. Inop table does not apply to Sidestep Rwy 7L Cats A and B. # RVR 1800 authorized with use of FD or AP or HUD to DA.

MALS Rwy 7R	MALS Rwy 7L	MISSED APPROACH: Climb to 3000 on LAX VORTAC R-068 to DOWNNE INT/ LAX 15.5 DME/RADAR and hold.
-------------	-------------	--

D-ATIS ARR 133.8 DEP 135.65	SOCAL APP CON 124.3 363.2 (APCH FM WEST) 124.5 235.975 (225°-044°)	124.9 269.0 (090°-224°) 128.5 360.7 (045°-089°)	LOS ANGELES TOWER N 133.9 239.3 S 120.95 379.1	GND CON N 121.65 327.0 S 121.75 327.0 W 121.4 327.0	CLNC DEL 120.35 327.0	CPDLC
---	--	--	--	---	---	-------



CATEGORY	A	B	C	D
S-ILS 7R#	328/24 200 (200-½)			
S-LOC 7R	460/24 332 (400-½)		460/26 332 (400-½)	
SIDESTEP 7L	520/55 392 (400-1)			520-1½ 392 (400-1½)

ELEV 128	TDZE 7R 128
	TDZE 7L 128
TDZ/CL Rwys 6R, 7L, 24R, and 25L HIRL all Rwys	
FAF to MAP 5.1 NM	
Knots	60 90 120 150 180
Min:Sec	5:06 3:24 2:33 2:02 1:42

SW-3, 25 FEB 2021 to 25 MAR 2021

SW-3, 25 FEB 2021 to 25 MAR 2021