

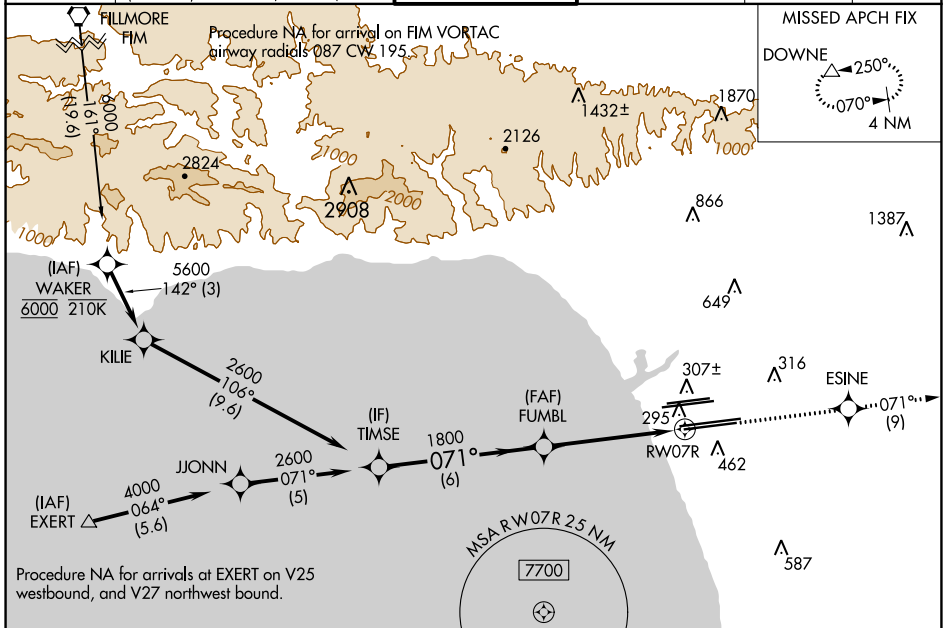
WAAS CH 69603 W07B	APP CRS 071°	Rwy Idg 11095 TDZE 128 Apt Elev 128
--	------------------------	--

RNAV (GPS) Y RWY 7R

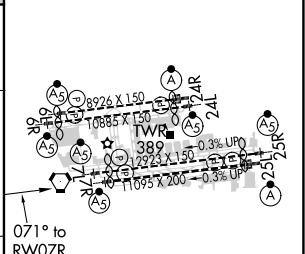
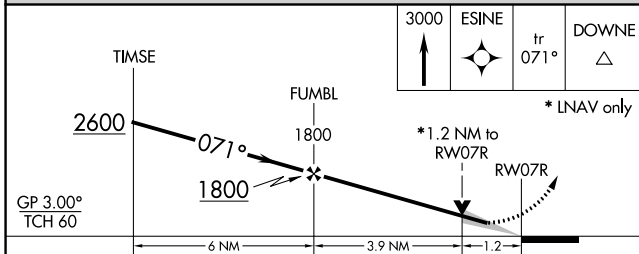
LOS ANGELES INTL (LAX)

<p>▼ For uncompensated Baro-VNAV systems, LNAV/VNAV NA below 5°C (41°F) or above 54°C (130°F). DME/DME RNP-0.3 NA. Simultaneous approach authorized. LNAV procedure NA during simultaneous operations. Use of FD or AP providing RNAV track guidance required during simultaneous operations. # RVR 1800 authorized with use of FD or AP or HUD to DA.</p>	<p>MALSR</p>	<p>MISSED APPROACH: Climb to 3000 direct ESINE and on track 071° to DOWNE and hold.</p>

D-ATIS ARR 133.8 DEP 135.65	SOCAL APP CON 124.3 363.2 [APCH FM WEST] (090°-224°) 124.5 235.975 [225°-044°] (045°-089°)	LOS ANGELES TOWER N 133.9 239.3 S 120.95 379.1	GND CON N 121.65 327.0 S 121.75 327.0 W 121.4 327.0	CLNC DEL 120.35 327.0	CPDLC
---	--	--	---	---	-------



ELEV 128	D TDZE 128
----------	-------------------



CATEGORY	A	B	C	D
LPV DA#		328/24	200 (200-½)	
LNAV/VNAV DA		462/30	334 (400-⅙)	
LNAV MDA	560/24	432 (500-½)	560/40	432 (500-¾)

TDZ/CL Rwy 6R, 7L, 24R, and 25L
HIRL all Rwys

SW-3, 25 FEB 2021 to 25 MAR 2021

SW-3, 25 FEB 2021 to 25 MAR 2021