

TUSTI TWO DEPARTURE (RNAV)

AL-237 (FAA)

LOS ANGELES INTL (LAX)
LOS ANGELES, CALIFORNIA

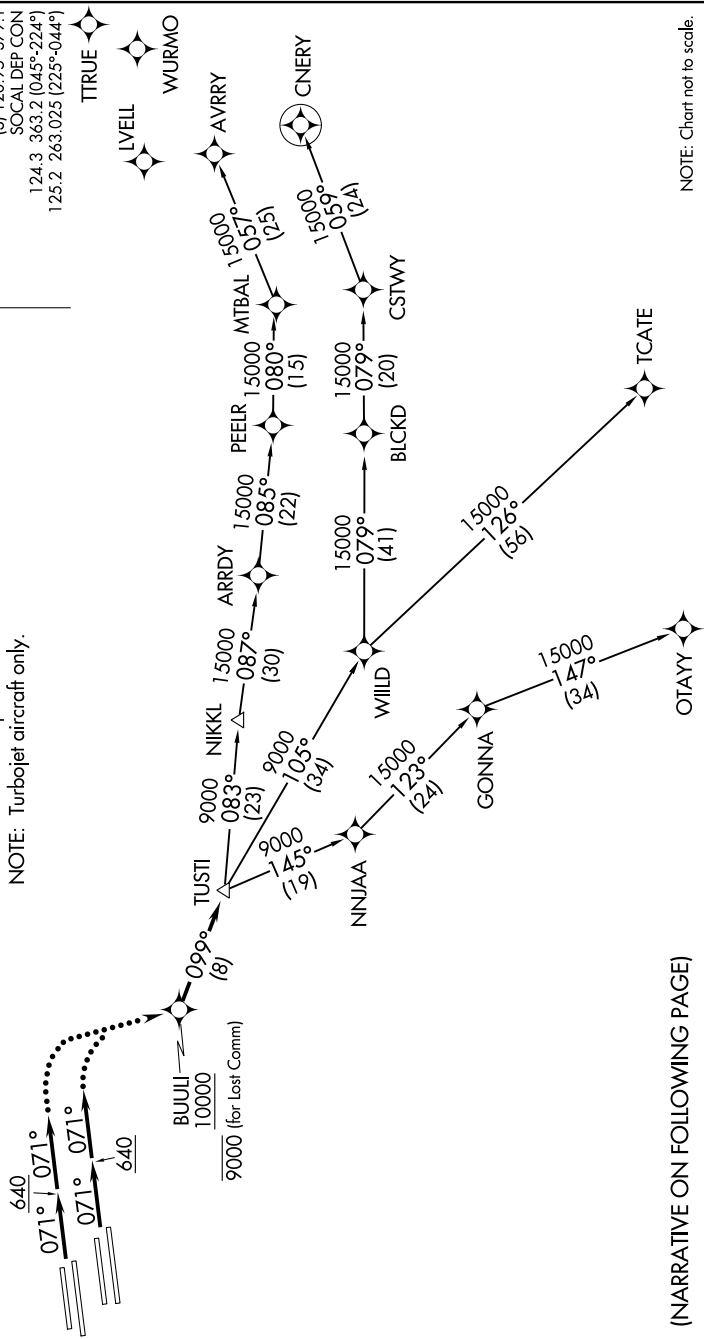
SW-3, 25 FEB 2021 to 25 MAR 2021

TOP ALTITUDE:
17000

TAKEOFF MINIMUMS
Rwys 6L/R, 7L/R: Standard with minimum climb of 500' per NM to 640.
Rwys 24L/R, 25L/R: NA-ATC.

- NOTE: DME/DME/IRU or GPS required.
- NOTE: RNAV 1.
- NOTE: RADAR required.
- NOTE: Turbojet aircraft only.

D-ATIS DEP 135.65
CLINC DEL 120.35 327.0
CPDIC
GND CON
(N) 121.65 327.0
(S) 121.75 327.0
(W) 121.4 327.0
LOS ANGELES TOWER
(N) 133.9 239.3
(S) 120.95 379.1
SOCAL DEP CON
124.3 363.2 (045°-224°)
125.2 263.025 (225°-044°)



NOTE: Chart not to scale.

(NARRATIVE ON FOLLOWING PAGE)

SW-3, 25 FEB 2021 to 25 MAR 2021