

HI-VOR/DME or TACAN RWY 26

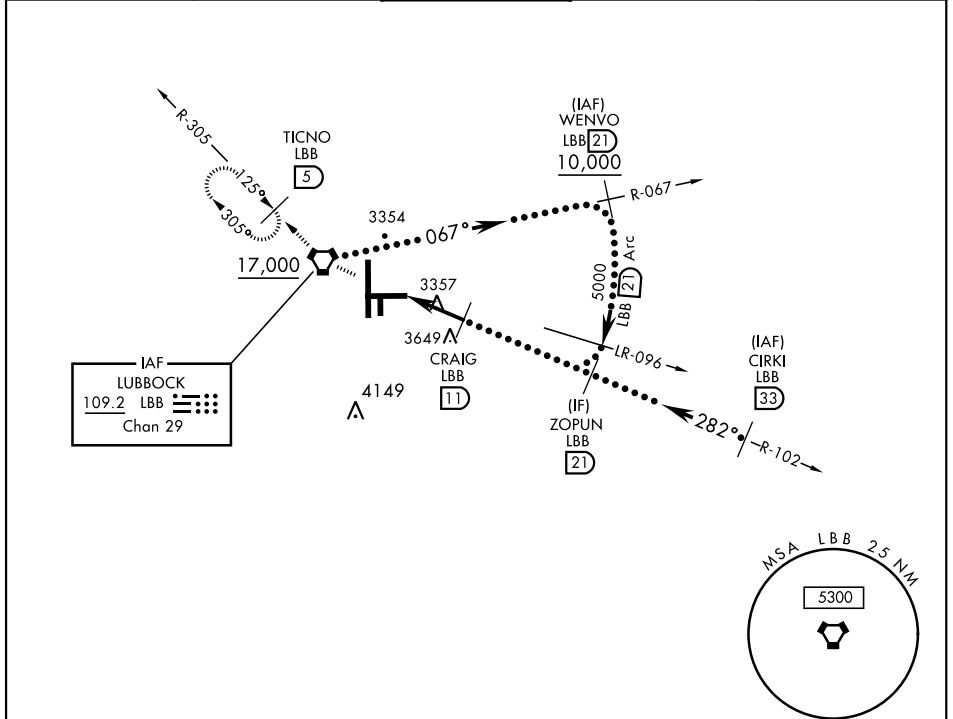
VORTAC LBB 109.2 Chan 29	APCH CRS 282°	Rwy Idg THRE Arpt Elev 8003 3253 3282
--	-------------------------	---

JAL-241 [USAF]

LUBBOCK PRESTON SMITH INTL (KLBB)

<p>▼ * Inoperative Table does not apply.</p>		<p>MISSED APPROACH: Climb and maintain 5100 direct LBB VORTAC and via LBB R-305 to TICNO (LBB 5 DME) and hold.</p>

<p>ATIS 125.3 270.275</p>	<p>LUBBOCK APP CON 119.2 351.8</p>	<p>LUBBOCK TOWER 120.5 239.3</p>	<p>GND CON 121.9 348.6</p>	<p>CLNC DEL 125.8 281.55</p>
--------------------------------------	---	---	---------------------------------------	---



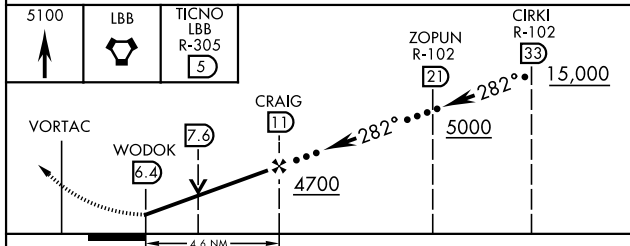
SC-2, 25 FEB 2021 to 25 MAR 2021

SC-2, 25 FEB 2021 to 25 MAR 2021

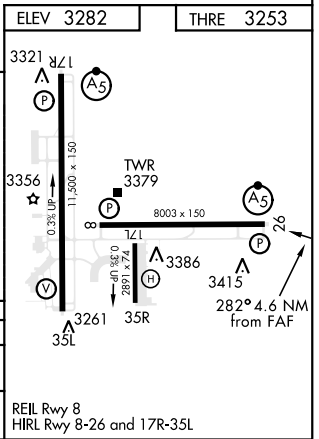
RADAR REQUIRED

(For entry at CIRKI)

EMERG SAFE ALT 100 NM 7300



CATEGORY	C	D	E
S-26 *	3680-1¼	427	(400-1¼)
CIRCLING	3740-1½ 458 (500-1½)	3840-2 558 (600-2)	3980-2½ 698 (700-2½)



LUBBOCK, TEXAS 33°40'N-101°49'W LUBBOCK PRESTON SMITH INTL (KLBB)

Amdt 1 13DEC12

HI-VOR/DME or TACAN RWY 26