

LOC/DME I-LBB	APP CRS	Rwy Idg	11500
111.7	174°	TDZE	3282
Chan 54		Apt Elev	3282

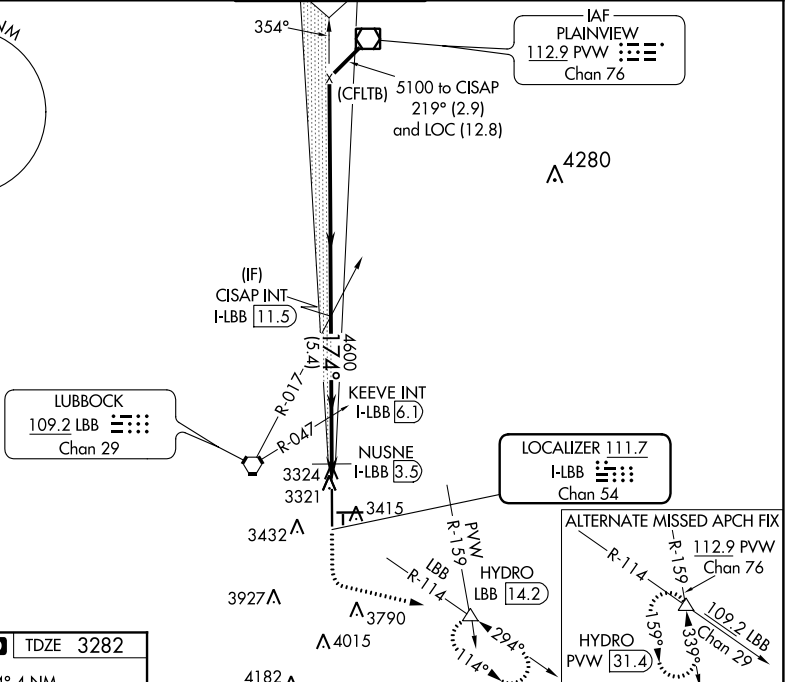
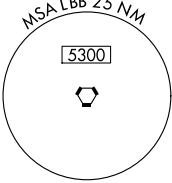
# ILS or LOC RWY 17R

## LUBBOCK PRESTON SMITH INTL (LBB)

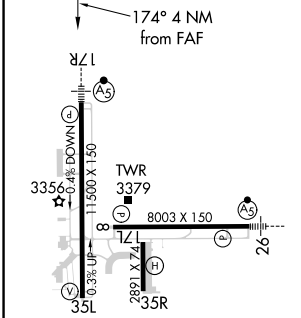
For inop MALS, increase S-ILS 17R Cat E visibility to RVR 4000, S-LOC 17R Cat C/D/E visibility to 1/8 mile, and NUSNE DME Fix Minimums, increase S-LOC 17R Cat C/D/E visibility to RVR 5000.  
#RVR 1800 authorized with the use of FD or AP or HUD to DA.

MALS R  
MISSED APPROACH: Climb to 3700 then climbing left turn to 6000 via LBB VORTAC R-114 to HYDRO INT/LBB 14.2 DME and hold, continue climb-in-hold to 6000.

ATIS 125.3 270.275	LUBBOCK APP CON 119.2 351.8	LUBBOCK TOWER 120.5 239.3	GND CON 121.9 348.6	CLNC DEL 125.8 281.55
-----------------------	--------------------------------	------------------------------	------------------------	--------------------------

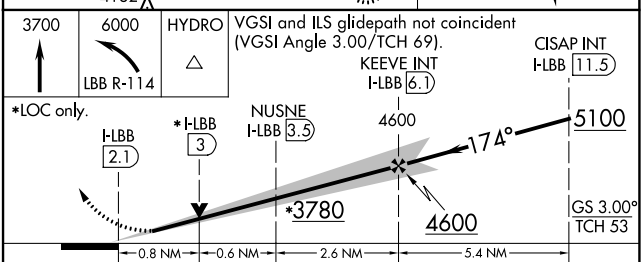


ELEV 3282	D	TDZE 3282
-----------	---	-----------



REIL Rwy 8  
HIRL Rwy 8-26 and 17R-35L

FAF to MAP 4 NM					
Knots	60	90	120	150	180
Min:Sec	4:00	2:40	2:00	1:36	1:20



CATEGORY	A	B	C	D	E
S-ILS 17R	#3482/24 200 (200-1/2)				
S-LOC 17R	3780/24	498 (500-1/2)	3780/50 498 (500-1)		
CIRCLING	3780-1	498 (500-1)	3880-1 1/2 598 (600-1 1/2)	3940-2 658 (700-2)	4100-3 818 (900-3)
	NUSNE FIX MINIMUMS (DME REQUIRED)				
S-LOC 17R	3620/24	338 (400-1/2)	3620/26 338 (400-1/2)		
CIRCLING	3720-1 438 (500-1)	3740-1 458 (500-1)	3880-1 1/2 598 (600-1 1/2)	3940-2 658 (700-2)	4100-3 818 (900-3)

LUBBOCK, TEXAS  
Amdt 18 05JAN17

33°40'N-101°49'W

# LUBBOCK PRESTON SMITH INTL (LBB)

## ILS or LOC RWY 17R

SC-2, 25 FEB 2021 to 25 MAR 2021

SC-2, 25 FEB 2021 to 25 MAR 2021