


LOC I-D/T 111.9	APP CRS 264°	Rwy Idg 8003
		TDZE 3255
		Apt Elev 3282

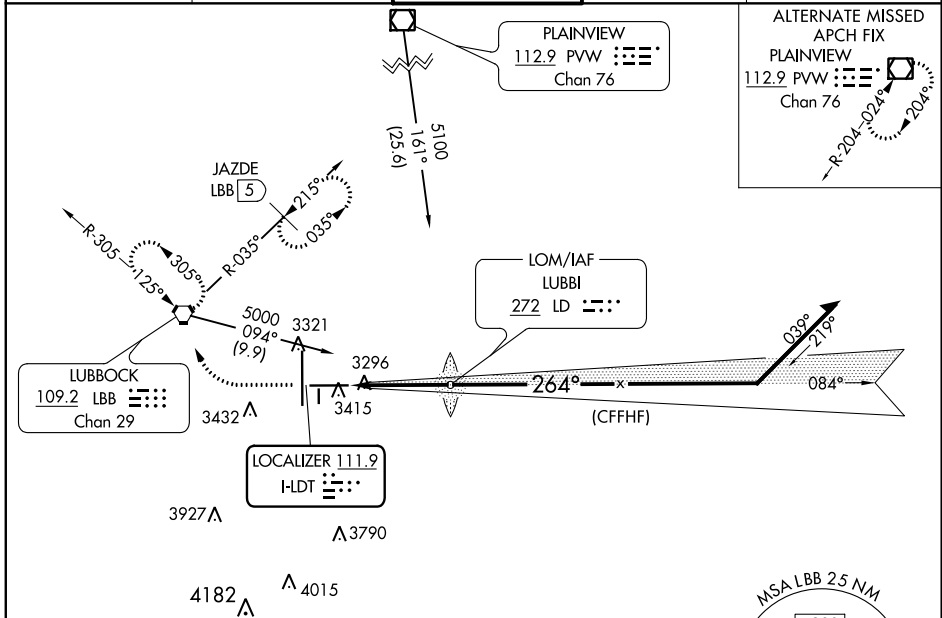
ILS or LOC RWY 26

LUBBOCK PRESTON SMITH INTL (LBB)

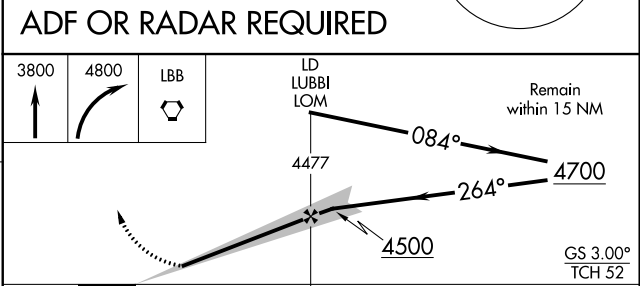
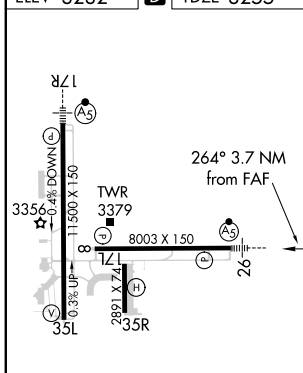
▽ For inop MALS, increase S-ILS 26 Cat E visibility to RVR 4000 and increase S-LOC 26 Cat C/D/E visibility to RVR 4500.
▲ ASR #RVR 1800 authorized with use of FD or AP or HUD to DA.

MALS

MISSED APPROACH: Climb to 3800 then climbing right turn to 4800 direct LBB VORTAC and hold (TACAN aircraft climb to 3800 then climbing right turn to 5100 on heading 300° and on LBB VORTAC R-035 to JAZDE/LBB 5 DME and hold northeast left turn 215° inbound).

ATIS 125.3 270.275	LUBBOCK APP CON 119.2 351.8	LUBBOCK TOWER 120.5 239.3	GND CON 121.9 348.6	CLNC DEL 125.8 281.55
------------------------------	---------------------------------------	-------------------------------------	-------------------------------	---------------------------------



ELEV 3282	D	TDZE 3255
-----------	----------	-----------



CATEGORY	A	B	C	D	E
S-ILS 26	#3455/24 200 (200-½)				
S-LOC 26	3560/24 305 (300-½)				
<input checked="" type="checkbox"/> CIRCLING	3720-1 438 (500-1)	3740-1 458 (500-1)	3880-1½ 598 (600-1½)	3940-2 658 (700-2)	4100-3 818 (900-3)

SC-2, 25 FEB 2021 to 25 MAR 2021

SC-2, 25 FEB 2021 to 25 MAR 2021