

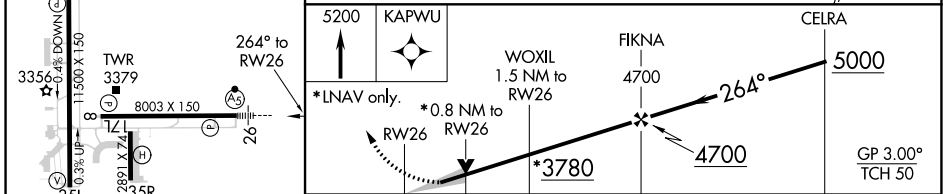
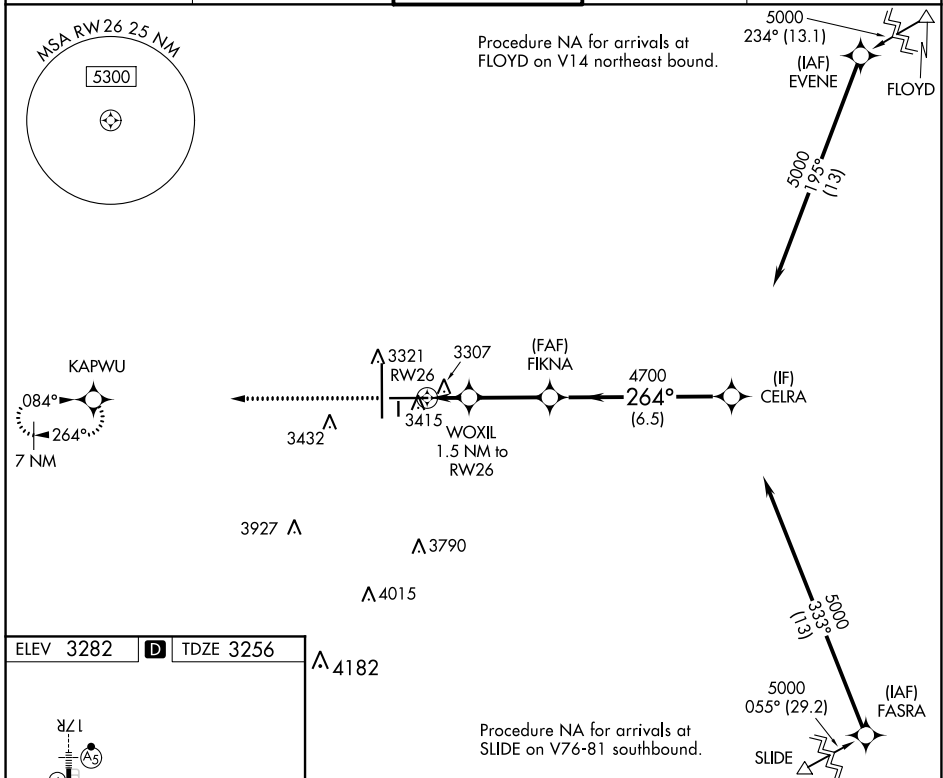
WAAS CH 45528 W26A	APP CRS 264°	Rwy Idg TDZE Apt Elev	8003 3256 3282
---------------------------------	------------------------	-----------------------------	---

RNAV (GPS) RWY 26

LUBBOCK PRESTON SMITH INTL (LBB)

RNP APCH. ▼ For uncompensated Baro-VNAV systems, LNAV/VNAV NA below -10°C or above 52°C. ▲ For inop ALS, increase LPV Cat E visibility to RVR 4000; increase LNAV/VNAV Cat E visibility to RVR 5000; and increase LNAV Cat C/D/E visibilities to RVR 4500. **RVR 1800 authorized with use of FD or AP or HUD to DA.	MALS R	MISSED APPROACH: Climb to 5200 direct KAPWU and hold.
--	--------	--

ATIS 125.3 270.275	LUBBOCK APP CON 119.2 351.8	LUBBOCK TOWER 120.5 239.3	GND CON 121.9 348.6	CLNC DEL 125.8 281.55
------------------------------	---------------------------------------	-------------------------------------	-------------------------------	---------------------------------



CATEGORY	A	B	C	D	E
LPV DA**		3456/24	200 (200-½)		
LNAV/VNAV DA		3579/26	323 (300-½)		
LNAV MDA		3560/24	304 (300-½)		
CIRCLING	3720-1	3740-1	3880-1½	3940-2	4100-3
	438 (500-1)	458 (500-1)	598 (600-1½)	658 (700-2)	818 (900-3)

SC-2, 25 FEB 2021 to 25 MAR 2021

SC-2, 25 FEB 2021 to 25 MAR 2021