

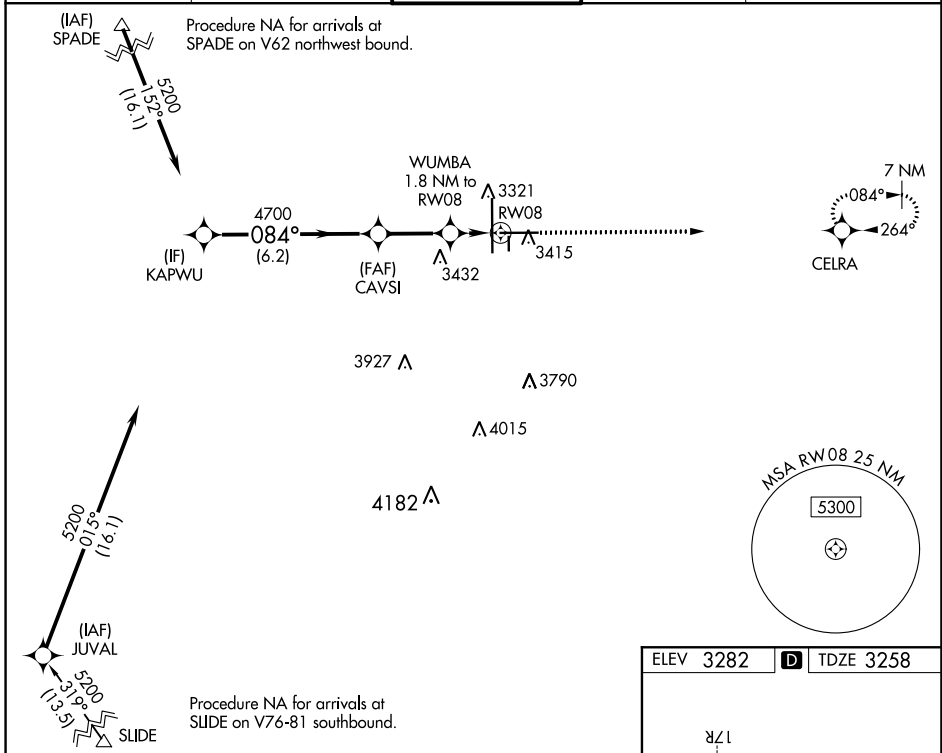
WAAS CH <b>97327</b> <b>W08A</b>	APP CRS <b>084°</b>	Rwy Idg TDZE Apt Elev	<b>8003</b> <b>3258</b> <b>3282</b>
--	------------------------	-----------------------------	---

# RNAV (GPS) RWY 8

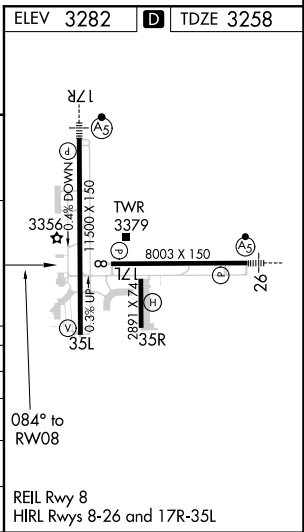
LUBBOCK PRESTON SMITH INTL (LBB)

RNP APCH.	For uncompensated Baro-VNAV systems, LNAV/VNAV NA below -10°C or above 52°C.	MISSED APPROACH: Climb to 5000 direct CELRA and hold.
-----------	--	---

ATIS <b>125.3 270.275</b>	LUBBOCK APP CON <b>119.2 351.8</b>	LUBBOCK TOWER <b>120.5 239.3</b>	GND CON <b>121.9 348.6</b>	CLNC DEL <b>125.8 281.55</b>
------------------------------	---------------------------------------	-------------------------------------	-------------------------------	---------------------------------



KAPWU	5200				5000	CELRA
GP 3.00° TCH 50	084°				*LNAV only.	
	6.2 NM	2.6 NM	0.8 NM	1 NM		
CATEGORY	A	B	C	D	E	
LPV DA	3458- <sup>3</sup> / <sub>4</sub>		200 (200- <sup>3</sup> / <sub>4</sub> )			
LNAV/VNAV DA	3544- <sup>7</sup> / <sub>8</sub>		286 (300- <sup>7</sup> / <sub>8</sub> )			
LNAV MDA	3640-1	382 (400-1)	3640-1 <sup>1</sup> / <sub>8</sub>	382 (400-1 <sup>1</sup> / <sub>8</sub> )		
CIRCLING	3720-1 438 (500-1)	3740-1 458 (500-1)	3880-1 <sup>1</sup> / <sub>2</sub> 598 (600-1 <sup>1</sup> / <sub>2</sub> )	3940-2 658 (700-2)	4100-3 818 (900-3)	



SC-2, 25 FEB 2021 to 25 MAR 2021

SC-2, 25 FEB 2021 to 25 MAR 2021