

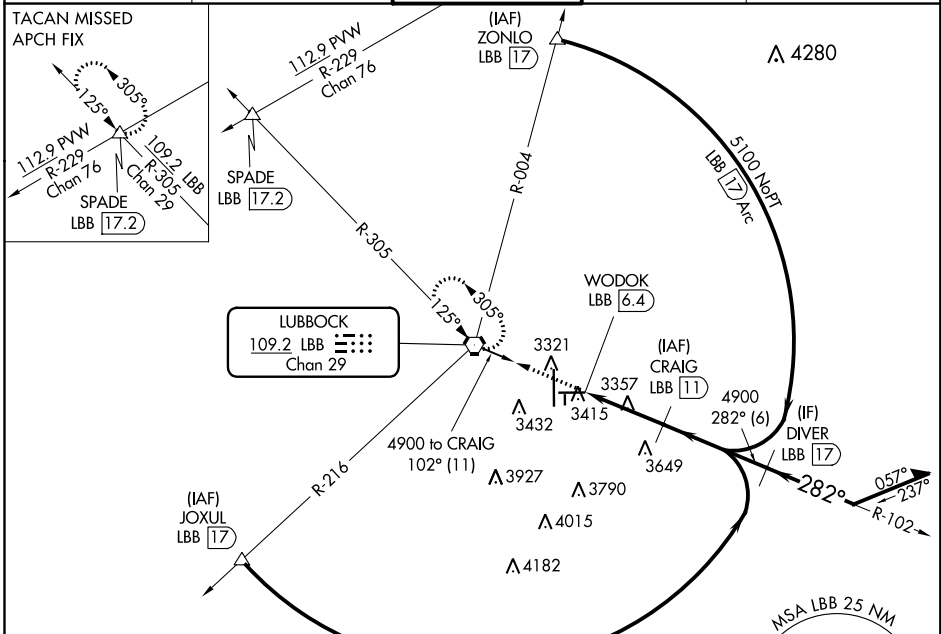
VORTAC LBB 109.2 Chan 29	APP CRS 282°	Rwy Idg TDZE Apt Elev 8003 3256 3282
---------------------------------------	------------------------	--

VOR/DME or TACAN RWY 26

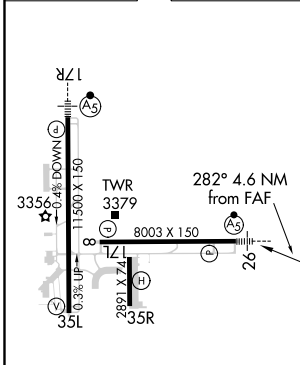
LUBBOCK PRESTON SMITH INTL (LBB)

Inop table does not apply.	MALS R	MISSED APPROACH: Climb to 5000 direct LBB VORTAC and hold (TACAN aircraft continue climb to 5100 on LBB R-305 to SPADE INT/17.2 DME and hold NW, left turn 125° inbound).
----------------------------	--------	---

ATIS 125.3 270.275	LUBBOCK APP CON 119.2 351.8	LUBBOCK TOWER 120.5 239.3	GND CON 121.9 348.6	CLNC DEL 125.8 281.55
------------------------------	---------------------------------------	-------------------------------------	-------------------------------	---------------------------------



ELEV 3282	D TDZE 3256
-----------	--------------------



REIL Rwy 8 HIRL Rws 8-26 and 17R-35L



5000	LBB	CRAIG LBB (11)	Remain within 15 NM
		WODOK LBB (6.4)	
		LBB (7.6)	
		4900	
		102°	
		282°	
		4900	
		3.28° TCH 50	
		1.2 NM	3.4 NM

CATEGORY	A	B	C	D	E
S-26	3680/55	424 (400-1)	3680-1¼	424 (400-1¼)	
C CIRCLING	3720-1 438 (500-1)	3740-1 458 (500-1)	3880-1½ 598 (600-1½)	3940-2 658 (700-2)	4100-3 818 (900-3)

SC-2, 25 FEB 2021 to 25 MAR 2021

SC-2, 25 FEB 2021 to 25 MAR 2021