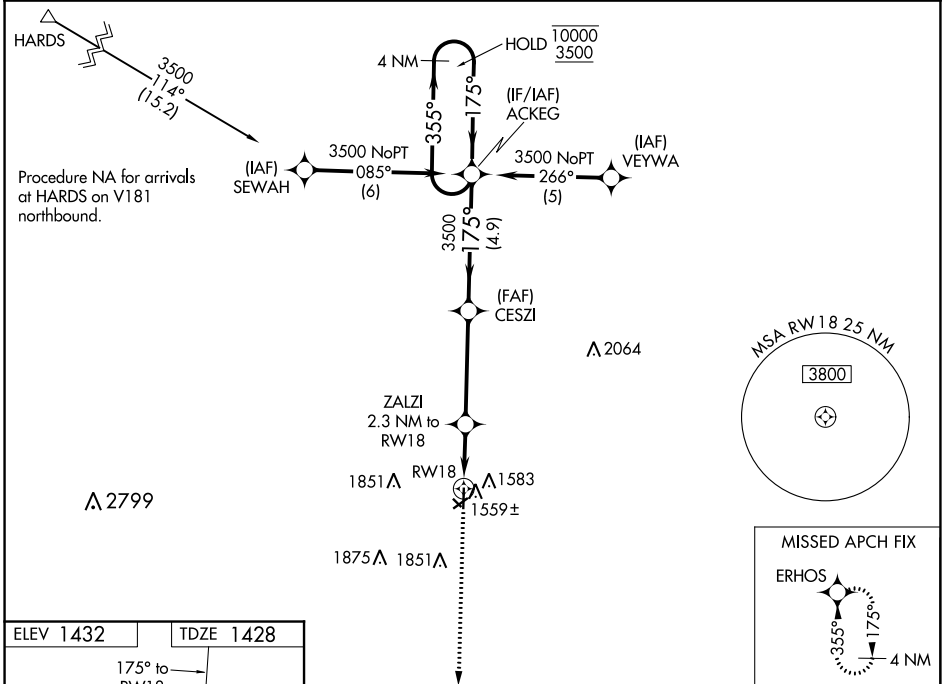


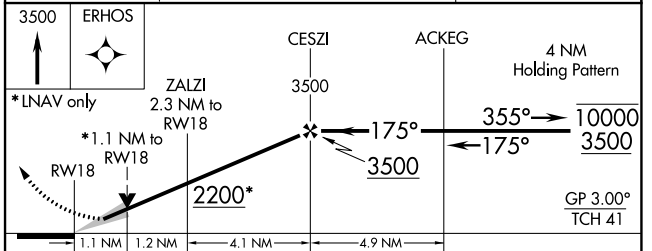
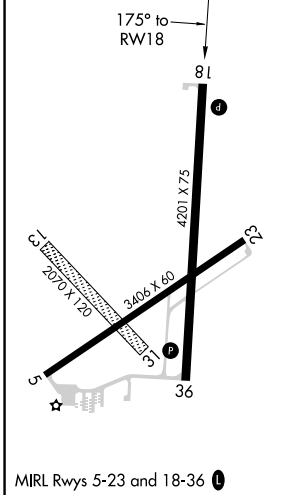
WAAS CH <b>77513</b> W18A	APP CRS <b>175°</b>	Rwy Idg TDZE Apt Elev	<b>4201</b> <b>1428</b> <b>1432</b>
---------------------------------	------------------------	-----------------------------	---

**RNAV (GPS) RWY 18**  
WAYNE MUNI/STAN MORRIS FIELD (L/G)

RNP APCH. ⚠ Circling NA to Rwys 13 and 31. For uncompensated Baro-VNAV systems, LNAV/VNAV NA below -17°C or above 54°C. ⚠ MISSED APPROACH: Climb to 3500 direct ERHOS and hold.		AWOS-3 <b>120.125</b>	SIOUX CITY APP CON ★ <b>124.6 307.0</b>	UNICOM <b>122.8 (CTAF) 0</b>
---	--	--------------------------	--	---------------------------------



ELEV 1432	TDZE 1428
-----------	-----------



CATEGORY	A	B	C	D
LPV DA	1678-1	250 (300-1)		NA
LNAV/VNAV DA	1678-1	250 (300-1)		NA
LNAV MDA	1820-1	392 (400-1)		NA
CIRCLING	2000-1	568 (600-1)		NA

NC-2, 25 FEB 2021 to 25 MAR 2021

NC-2, 25 FEB 2021 to 25 MAR 2021