

LOC/DME I-LCH 109.1 Chan 28	APP CRS 152°	Rwy Idg 6500 TDZE 12 Apt Elev 15
---	------------------------	---

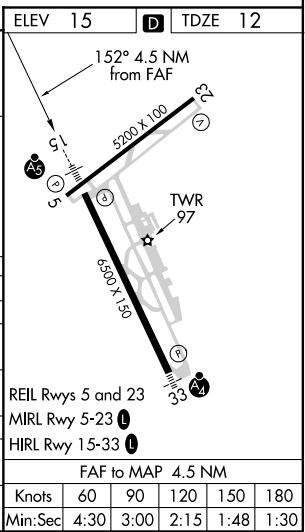
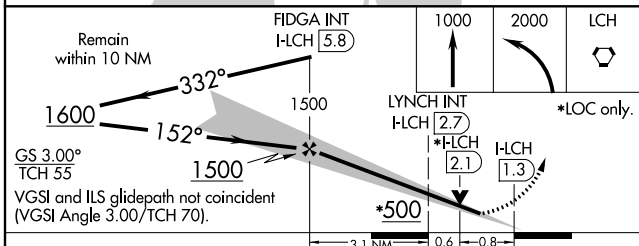
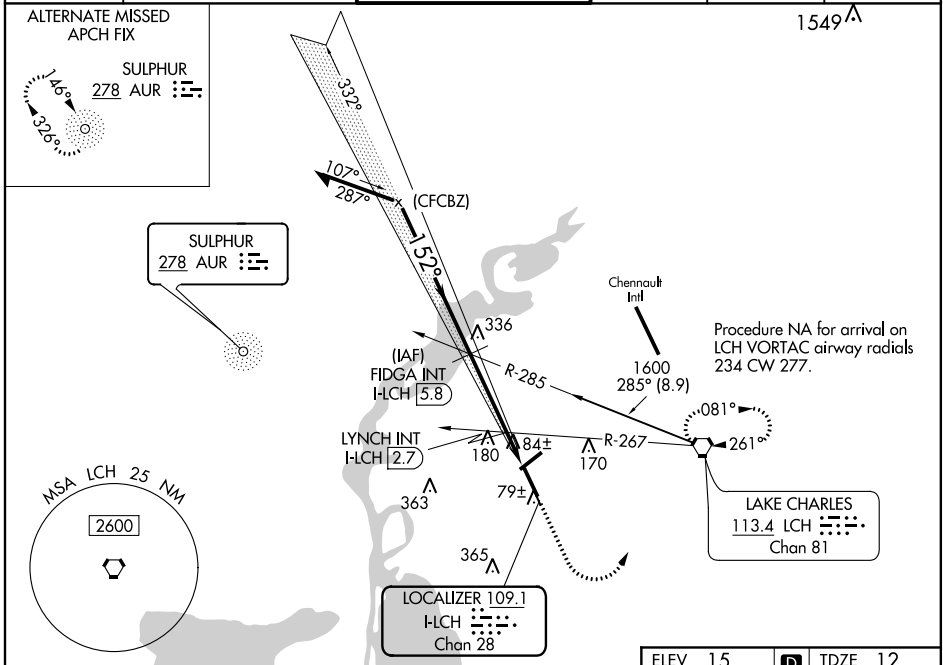
ILS or LOC RWY 15

LAKE CHARLES RGNL (LCH)

ASR For inop ALS, increase S-LOC 15 Cats C and D visibility to 1 3/8 mile.
**** RVR 1800 authorized with use of FD or AP or HUD to DA.**

MALSR MISSED APPROACH: Climb to 1000 then climbing left turn to 2000 direct LCH VORTAC and hold.

ATIS 118.75	LAKE CHARLES APP CON * 119.35 353.75	LAKE CHARLES TOWER * 120.7 (CTAF) 257.8	GND CON 121.8	CLNC DEL 126.25	UNICOM 122.95
-----------------------	--	---	-------------------------	---------------------------	-------------------------



CATEGORY	A	B	C	D
S-ILS 15 **	212/24 200 (200-1/2)			
S-LOC 15	500/24	488 (500-1/2)	500/50	488 (500-1)
C CIRCLING	500-1	485 (500-1)	580-1 1/2 565 (600-1 1/2)	680-2 665 (700-2)
LYNCH FIX MINIMUMS (DUAL VOR RECEIVERS OR DME REQUIRED)				
S-LOC 15	340/24	328 (400-1/2)	340/26	328 (400-1/2)
C CIRCLING	440-1 425 (500-1)	480-1 465 (500-1)	580-1 1/2 565 (600-1 1/2)	680-2 665 (700-2)

SC-4, 25 FEB 2021 to 25 MAR 2021

SC-4, 25 FEB 2021 to 25 MAR 2021