

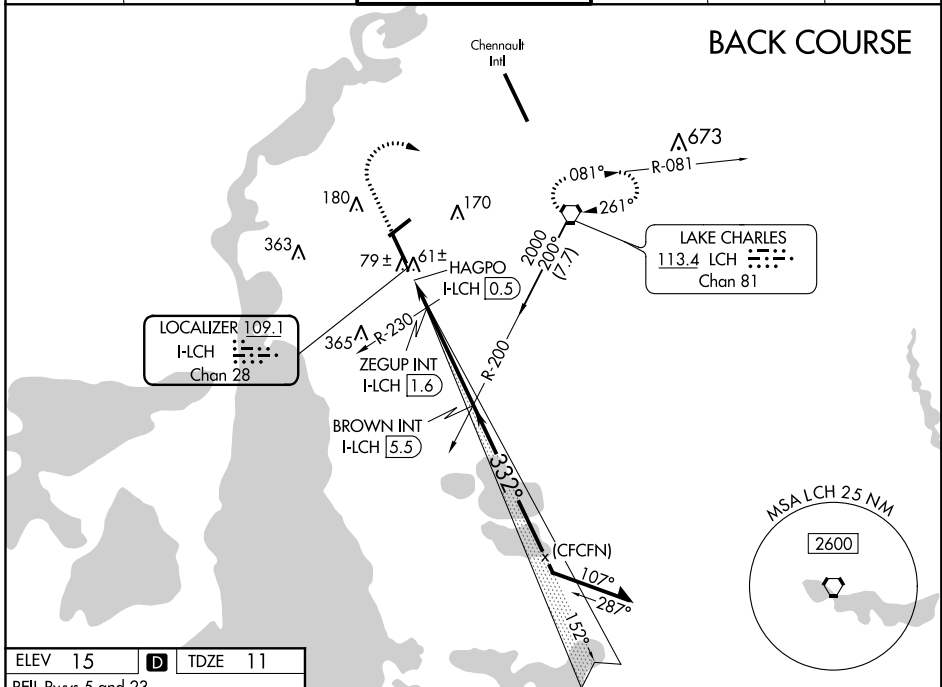
LOC I-LCH 109.1 Chan 28	APP CRS 332°	Rwy Idg TDZE 11 Apt Elev 15
--------------------------------------	------------------------	---

LOC BC RWY 33

LAKE CHARLES RGNL (LCH)

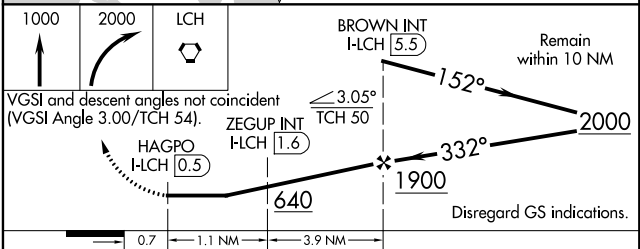
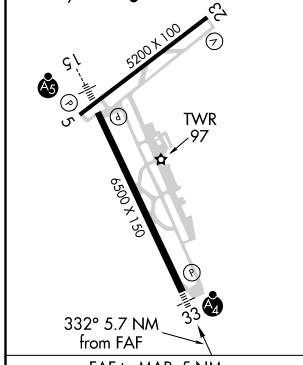
▲ For inop MALSF, increase S-33 Cat D visibility to 1¼ mile. For inop MALSF, increase ZEGUP Fix Minimums S-33 Cats C and D visibility to 7/8 mile.	MALSF 	MISSED APPROACH: Climb to 1000 then climbing right turn to 2000 direct LCH VORTAC and hold.
--	------------------	--

ATIS 118.75	LAKE CHARLES APP CON* 119.35 353.75	LAKE CHARLES TOWER* 120.7 (CTAF) 257.8	GND CON 121.8	CLNC DEL 126.25	UNICOM 122.95
------------------------------	--	---	--------------------------------	----------------------------------	--------------------------------



ELEV 15	D	TDZE 11
---------	----------	---------

REIL Rwy 5 and 23
MIRL Rwy 5-23
HIRL Rwy 15-33



CATEGORY	A	B	C	D
S-33	640-¾	629 (700-¾)	640-1½	629 (700-1½)
C CIRCLING	640-1	625 (700-1)	640-1¾	680-2
			625 (700-1¾)	665 (700-2)
ZEGUP FIX MINIMUMS (DUAL VOR RECEIVERS OR DME REQUIRED)				
S-33	320-¾		309 (400-¾)	
C CIRCLING	440-1	480-1	580-1½	680-2
	425 (500-1)	465 (500-1)	565 (600-1½)	665 (700-2)

Knots	60	90	120	150	180
Min:Sec	5:00	3:20	2:30	2:00	1:40

SC-4, 25 FEB 2021 to 25 MAR 2021

SC-4, 25 FEB 2021 to 25 MAR 2021