

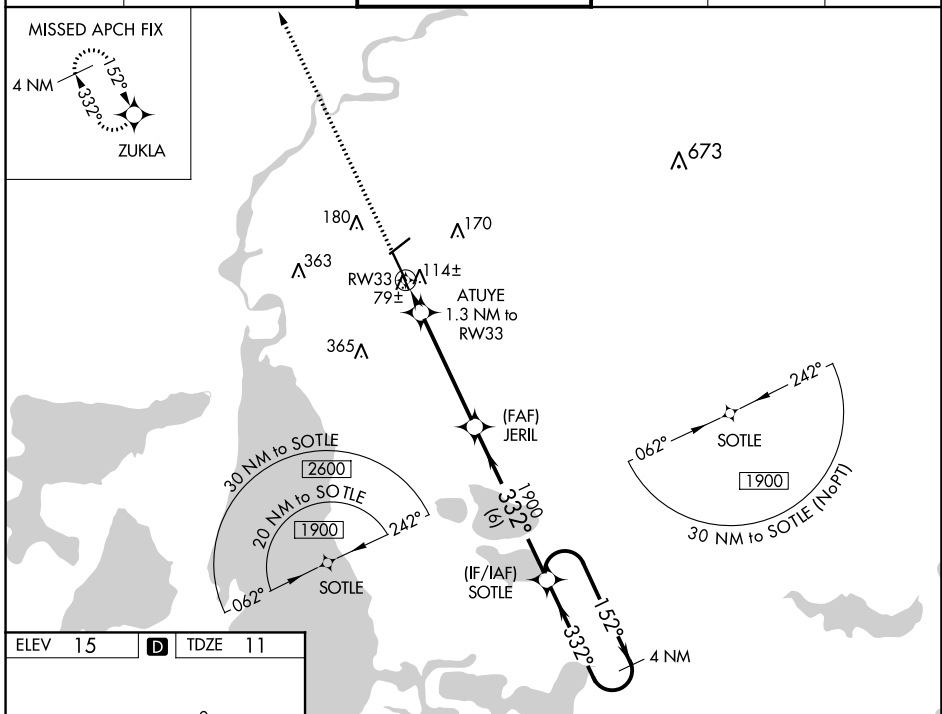
WAAS CH 56215 W33A	APP CRS 332°	Rwy Idg TDZE Apt Elev	6500 11 15
--	------------------------	-----------------------------	---------------------------------------

RNAV (GPS) RWY 33

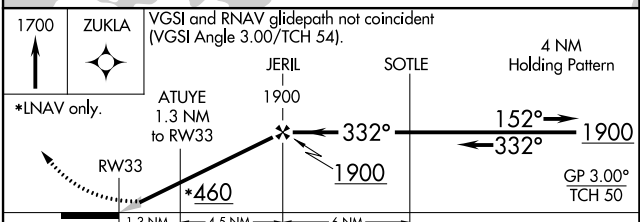
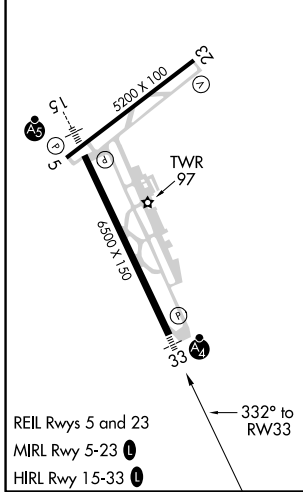
LAKE CHARLES RGNL (LCH)

RNP APCH.	MALSF	MISSED APPROACH: Climb to 1700 direct ZUKLA and hold.
⚠ For uncompensated Baro-VNAV systems, LNAV/VNAV NA below -3°C (27°F) or above 43°C (109°F). For inop MALSF, increase LNAV/VNAV all Cats visibility to ½ and LNAV all Cats visibility to 1 mile.		

ATIS 118.75	LAKE CHARLES APP CON* 119.35 353.75	LAKE CHARLES TOWER* 120.7 (CTAF) 257.8	GND CON 121.8	CLNC DEL 126.25	UNICOM 122.95
-----------------------	---	--	-------------------------	---------------------------	-------------------------



ELEV 15	D	TDZE 11
---------	----------	---------



CATEGORY	A	B	C	D
LPV DA		211-¾	200 (200-¾)	
LNAV/VNAV DA		296-¾	285 (300-¾)	
LNAV MDA		380-¾	369 (400-¾)	
C CIRCLING	440-1 425 (500-1)	480-1 465 (500-1)	580-1½ 565 (600-1½)	680-2¼ 665 (700-2¼)

SC-4, 25 FEB 2021 to 25 MAR 2021

SC-4, 25 FEB 2021 to 25 MAR 2021