

APP CRS 264°	Rwy Idg 5286
	TDZE 533
	Apt Elev 545

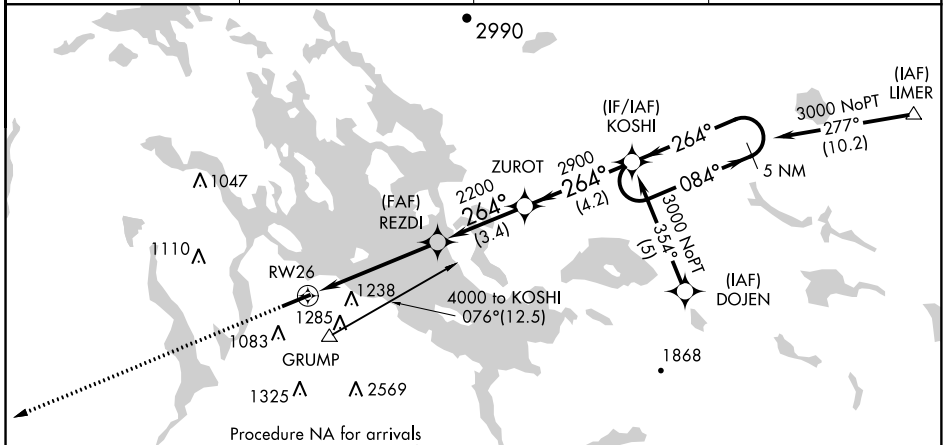
RNAV (GPS) RWY 26

LACONIA MUNI (LCI)

⚠ Helicopter visibility reduction below 1 SM NA. DME/DME RNP-0.3 NA. If local altimeter setting not received, use Concord altimeter setting and increase all MDAs 80 feet. Night Landing: Rwy 26 NA.

MISSED APPROACH: Climb to 4400 direct TUYUC and hold, continue climb-in-hold to 4400.

AWOS-3PT 133.525	BOSTON APP CON 134.75 254.25	CLNC DEL 119.85	UNICOM 123.0 (CTAF) 0
----------------------------	--	---------------------------	---------------------------------



MISSED APCH FIX

5 NM

263°

083°

TUYUC

Procedure NA for arrivals at GRUMP via V496 northwest bound and V322 southwest bound.

1481±

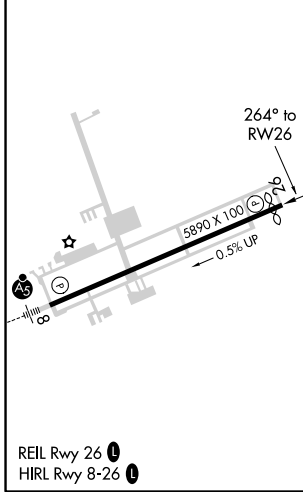
4000 to DOJEN 060° (30)



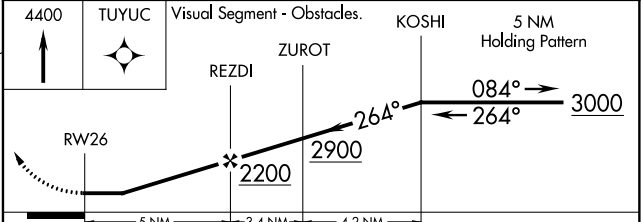
ELEV 545	D	TDZE 533
----------	----------	----------

CONCORD CON

Procedure NA for arrivals at CON VOR/DME via V322 southwest bound and V93 west bound.



4400	TUYUC	Visual Segment - Obstacles.	KOSHI	5 NM Holding Pattern
------	-------	-----------------------------	-------	----------------------



CATEGORY	A	B	C	D
LNAV MDA	1420-1¼ 875 (900-1¼)	887 (900-1¼)	1420-2¾ 887 (900-2¾)	1420-3 887 (900-3)
C CIRCLING	1420-1¼ 875 (900-1¼)	1600-1½ 1055 (1100-1½)	2160-3 1615 (1700-3)	2860-3 2315 (2400-3)

NE-1, 25 FEB 2021 to 25 MAR 2021

NE-1, 25 FEB 2021 to 25 MAR 2021