

# CLEGG FIVE ARRIVAL

LEXINGTON APP CON  
120.15 259.3  
BLUE GRASS ATIS  
126.3

CINCINNATI  
117.3 CVG  
Chan 120  
N39° 00.96' - W84° 42.20'  
L-26-27, H-10

WARSA  
N38° 45.80' - W84° 56.89'  
VERTICAL NAVIGATION  
PLANNING INFORMATION  
Expect 14000.

NERVE  
N38° 36.94' - W85° 05.42'  
VERTICAL NAVIGATION  
PLANNING INFORMATION  
Expect 12000.

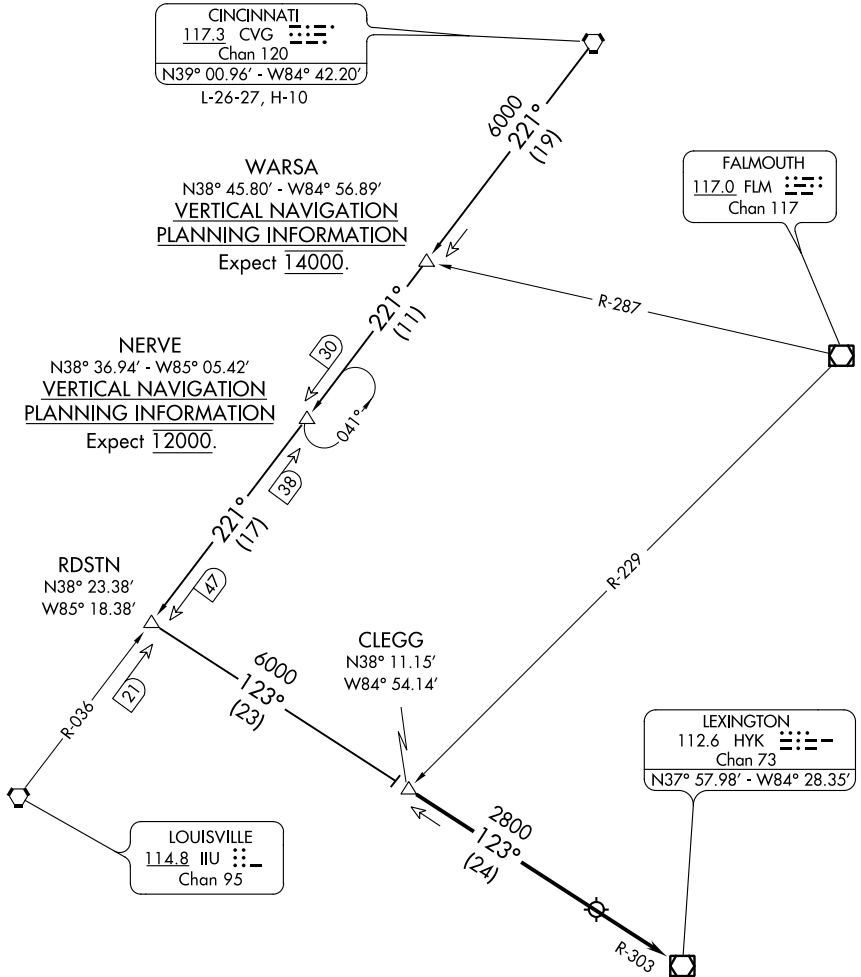
RDSTN  
N38° 23.38'  
W85° 18.38'

CLEGG  
N38° 11.15'  
W84° 54.14'

LOUISVILLE  
114.8 IUU  
Chan 95

FALMOUTH  
117.0 FLM  
Chan 117

LEXINGTON  
112.6 HYK  
Chan 73  
N37° 57.98' - W84° 28.35'



SE-1, 25 FEB 2021 to 25 MAR 2021

SE-1, 25 FEB 2021 to 25 MAR 2021

## ARRIVAL ROUTE DESCRIPTION

CINCINNATI TRANSITION (CVG.CLEGG5):  
From over CVG VORTAC on CVG R-221 to RDSTN  
then on HYK VOR/DME R-303 to CLEGG. Thence...

...From over CLEGG on HYK R-303 to HYK VOR/DME.  
Expect radar vectors to final approach course after  
CLEGG.

NOTE: Radar Required.  
NOTE: DME Required.

NOTE: Chart not to scale.