

WAAS CH 70401 W04A	APP CRS 046°	Rwy Idg TDZE Apt Elev	6604 969 979
--	------------------------	-----------------------------	---

RNAV (GPS) RWY 4

BLUE GRASS (LEX)

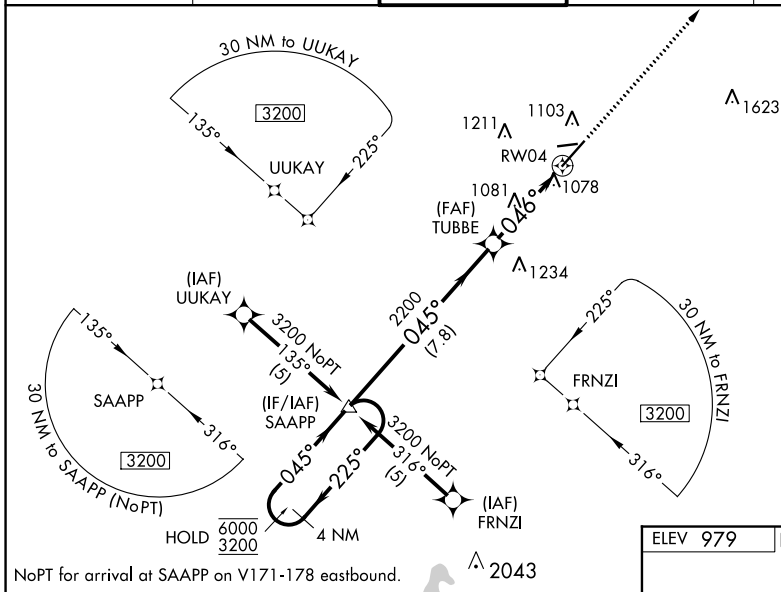
RNP APCH.

▼ For uncompensated Baro-VNAV systems, LNAV/VNAV NA below -16°C or above 54°C.
 ▲ For inop ALS, increase LPV all Cats visibility to RVR 4500, LNAV/VNAV all Cats visibility to RVR 6000, and LNAV all Cats visibility to RVR 5500. For inop ALS when using Frankfort altimeter setting, increase LNAV Cat A/B visibility to RVR 5500. When local altimeter setting not received, use Frankfort altimeter setting and increase LPV DA to 1336 feet, LNAV/VNAV DA to 1424 feet, and all MDA 80 feet, increase LNAV Cat C visibility to RVR 4500, and Circling Cat C/D visibility ¼ SM.
 Baro-VNAV and VDP NA when using Frankfort altimeter setting.

MALSR

MISSED APPROACH:
Climb to 3200 direct
UPRAW and hold.

ATIS 126.3	LEXINGTON APP CON 120.15 259.3	LEXINGTON TOWER 119.1 257.8	GND CON 121.9	CLNC DEL 132.35
----------------------	--	---------------------------------------	-------------------------	---------------------------



MISSED APCH FIX
UPRAW

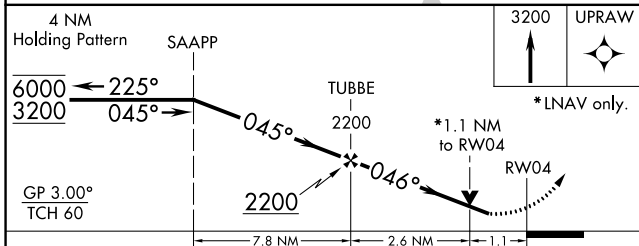
046°

225°

4 NM

1623 A

1997 A



ELEV 979

TDZE 969

1037± A 4000 X 75

0.6% UP

700 X 150

0.5% UP

046° to RW04

TWR 1091

TDZ/CL Rwy 4
REIL Rwys 9, 22 and 27
HIRL Rwy 4-22
MIRL Rwy 9-27

CATEGORY	A	B	C	D
LPV DA		1274/40	305 (300-¾)	
LNAV/VNAV DA		1362/50	393 (400-1)	
LNAV MDA	1340/40	371 (400-¾)		1340/50 371 (400-1)
CIRCLING	1420-1½ 441 (500-1½)	1440-1½ 461 (500-1½)	1520-1½ 541 (600-1½)	1600-2 621 (700-2)

SE-1, 25 FEB 2021 to 25 MAR 2021

SE-1, 25 FEB 2021 to 25 MAR 2021