

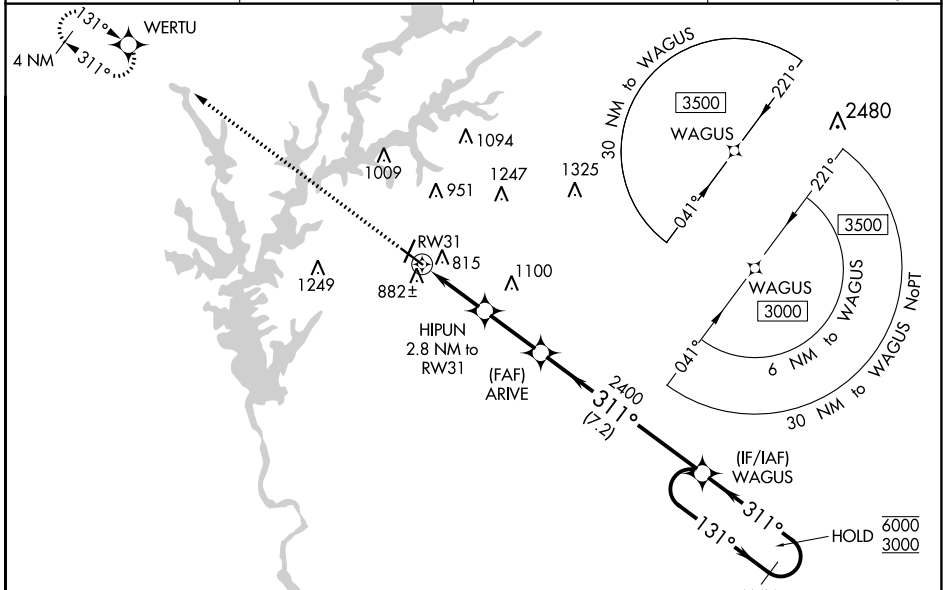
WAAS CH 82616 W31A	APP CRS 311°	Rwy Idg TDZE 6500 Apt Elev 694
----------------------------------------	------------------------	----------------------------------------------------

RNAV (GPS) RWY 31

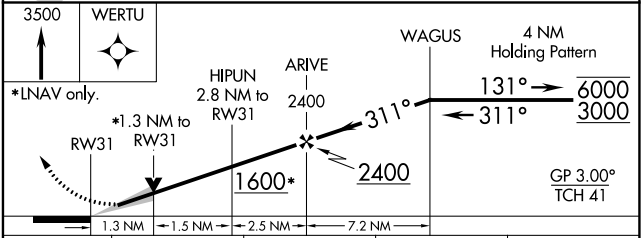
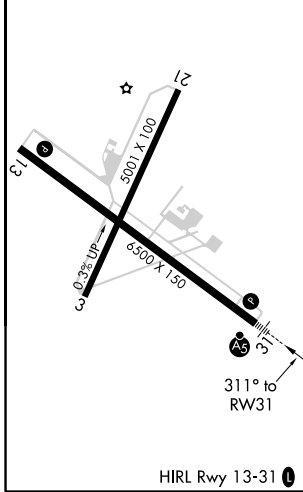
LAGRANGE-CALLAWAY (LGC)

RNP APCH.	MALSR 	MISSED APPROACH: Climb to 3500 direct WERTU and hold.
 Circling Rwy 13, 21 NA at night. For uncompensated Baro-VNAV systems, LNAV/VNAV NA below -16°C or above 54°C.		

AWOS-3 126.325	ATLANTA APP CON* 125.5 323.1	CINC DEL 119.25	UNICOM 122.975 (CTAF)
--------------------------	----------------------------------------	---------------------------	---------------------------------



ELEV 694	TDZE 681
----------	----------



CATEGORY	A	B	C	D
LPV DA	881-1/2		200 (200-1/2)	
LNAV/VNAV DA	1112-3/4		431 (500-3/4)	
LNAV MDA	1140-1/2	459 (500-1/2)	1140-7/8	459 (500-7/8)
CIRCLING	1280-1	586 (600-1)	1540-2 1/2	1600-3
			846 (900-2 1/2)	906 (1000-3)

SE-4, 25 FEB 2021 to 25 MAR 2021

SE-4, 25 FEB 2021 to 25 MAR 2021