

YUMA PROVING GROUND, ARIZONA

RNAV (GPS) RWY 6

APCH CRS **063°**
 Rwy ldg **6000**
 TDZE **387**
 Arprt Elev **433**

AL-6341 [USA]

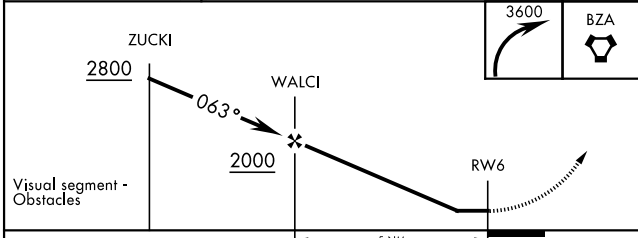
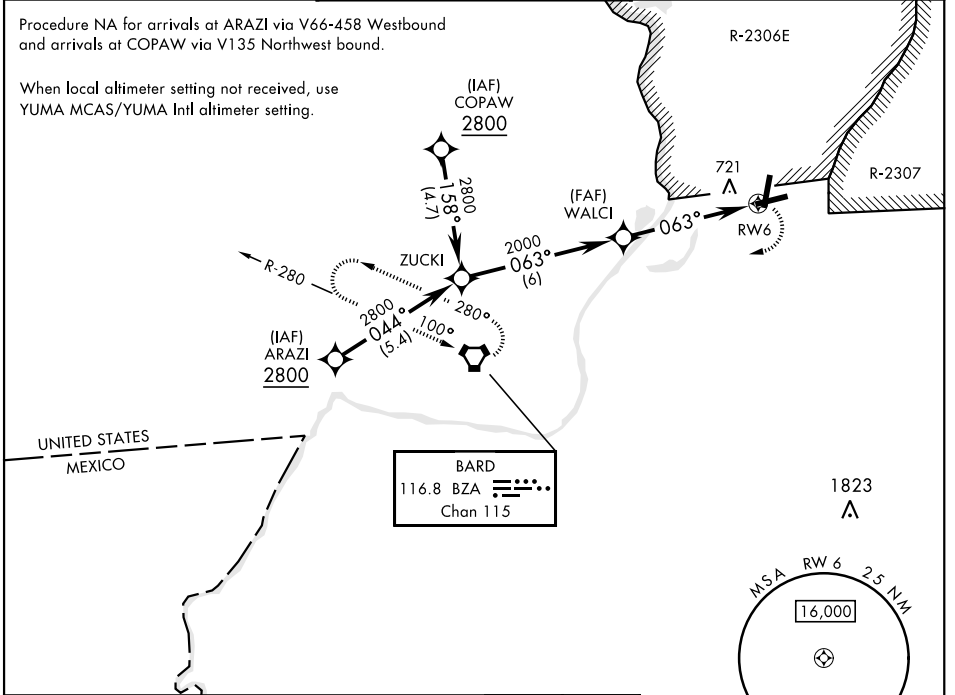
LAGUNA AAF (KLGf)

▼ DME/DME RNP-0.3 NA
▲ NA Procedure NA when airfield closed.
 MISSED APPROACH: Climbing right turn to 3600 direct BZA VORTAC and hold.

YUMA APP CON **124.7 374.8** LAGUNA TOWER ★ **126.2 (CTAF) 242.175** GND CON **121.8 0 229.4**

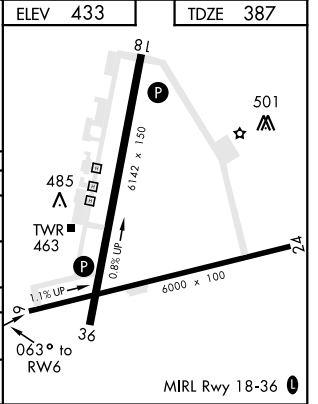
Procedure NA for arrivals at ARAZI via V66-458 Westbound and arrivals at COPAW via V135 Northwest bound.

When local altimeter setting not received, use YUMA MCAS/YUMA Intl altimeter setting.



ELEV 433 TDZE 387

CATEGORY	A	B	C	D
LNAV MDA	1020-1	633 (600-1)	1020-1¾ 633 (600-1¾)	1020-2 633 (600-2)
CIRCLING	1080-1	647 (700-1)	1080-1¾ 647 (700-1¾)	1080-2 647 (700-2)
YUMA MCAS/YUMA Intl ALTIMETER SETTING				
LNAV MDA	1100-1	713 (700-1)	1100-2 713 (700-2)	1100-2¼ 713 (700-2¼)
CIRCLING	1160-1	727 (800-1)	1160-2 727 (800-2)	1160-2¼ 727 (800-2¼)



YUMA PROVING GROUND, ARIZONA
 Orig A 17AUG17

32°52'N-114°24'W

LAGUNA AAF (KLGf)

RNAV (GPS) RWY 6

SW-4, 25 FEB 2021 to 25 MAR 2021

SW-4, 25 FEB 2021 to 25 MAR 2021