

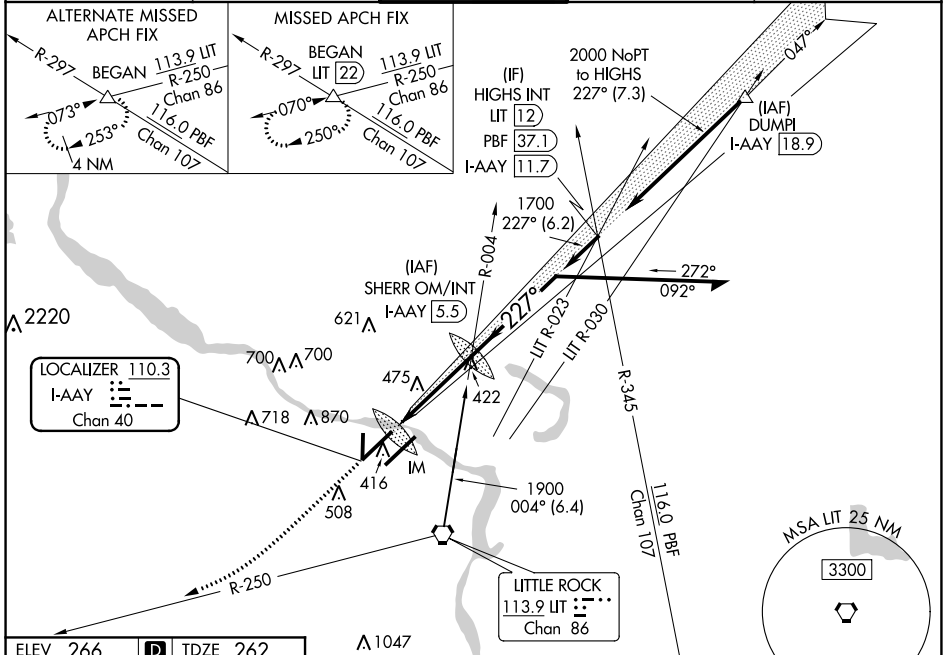
LOC/DME I-AAY 110.3 Chan 40	APP CRS 227°	Rwy Idg TDZE Apt Elev	8273 262 266
--	------------------------	-----------------------------	---

BILL AND HILLARY CLINTON NATIONAL/ADAMS FIELD (LIT)

ILS RWY 22R (SA CAT I)

DME required.		ALSF-2	MISSED APPROACH: Climb to 1000 then climbing right turn to 2300 on LIT VORTAC R-250 to BEGAN INT/LIT 22 DME and hold.	
<p>Simultaneous approach authorized with Rwy 22L. Requires specific OPSPEC, MSPEC, or LOA approval and use of HUD to DA.</p>				

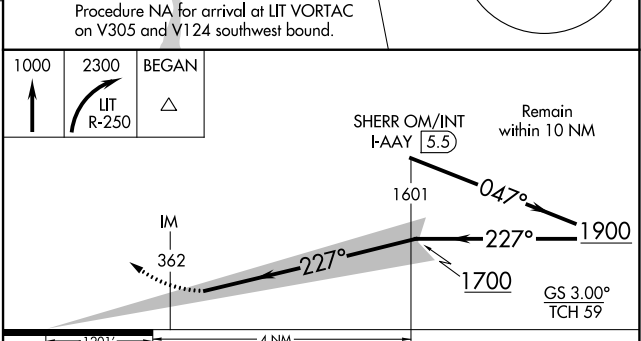
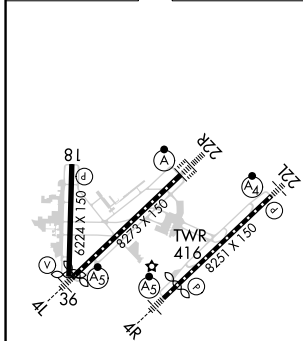
D-ATIS 125.65	LITTLE ROCK APP CON 135.4 353.6	ADAMS TOWER 118.7 257.8	GND CON 121.9 339.8	CLNC DEL 118.95
-------------------------	---	-----------------------------------	-------------------------------	---------------------------



SC-1, 25 FEB 2021 to 25 MAR 2021

SC-1, 25 FEB 2021 to 25 MAR 2021

ELEV 266	D	TDZE 262
----------	----------	----------



CATEGORY	A	B	C	D
S-ILS-22R	RA 182/14		150 DA 412	

SA CATEGORY I ILS - SPECIAL AIRCREW & AIRCRAFT CERTIFICATION REQUIRED

TDZ/CL Rwy 22R
MIRL Rwy 18-36
HIRL Rwy 4R-22L and 4L-22R