

| | | |
|---|------------------------|---|
| LOC/DME I-LIT 110.3 Chan 40 | APP CRS 047° | Rwy Idg 8273 TDZE 258 Apt Elev 266 |
|---|------------------------|---|

ILS or LOC RWY 4L

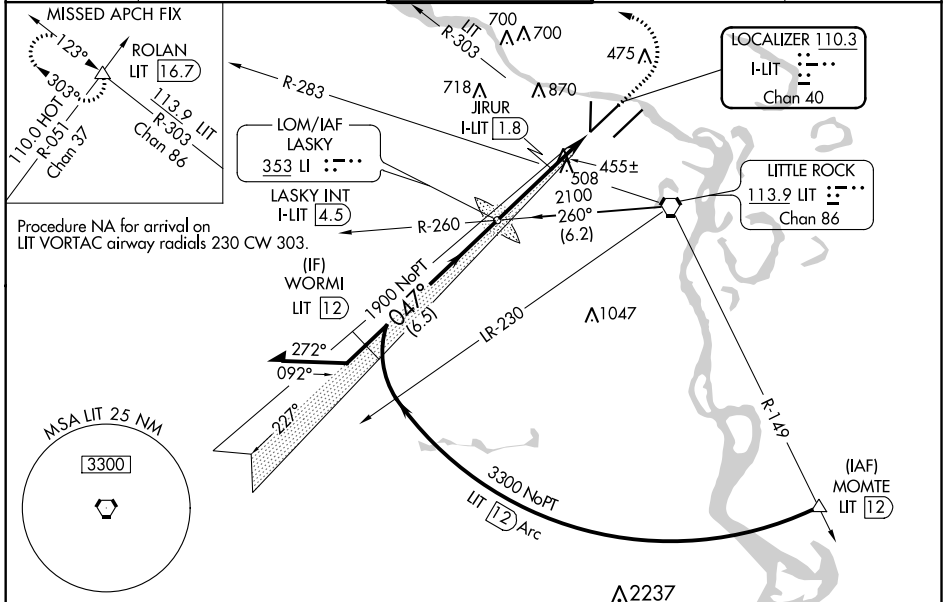
BILL AND HILLARY CLINTON NATIONAL/ADAMS FIELD (LIT)

⚠ Inop table does not apply to S-ILS 4L all Cats. Simultaneous approach authorized. Rwy 4L helicopter visibility reduction below RVR 4000 NA. LOC minimums: For inop ALS, increase S-LOC 4L Cats A/B visibility to 1 SM and Cats C/D visibility to 2 SM. JIRUR fix minimums: For inop ALS, increase S-LOC 4L Cats A/B visibility to 1 SM and Cats C/D visibility to 1 3/8 SM.

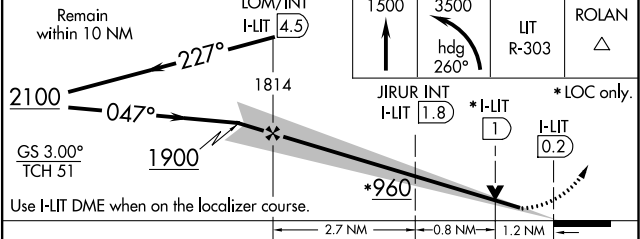
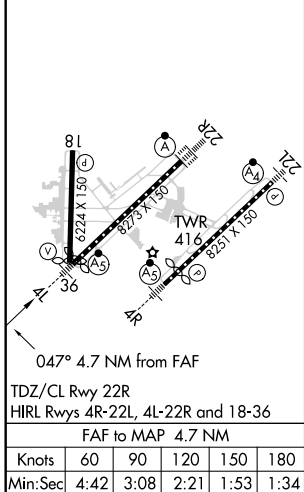
MALS
AS

MISSED APPROACH: Climb to 1500 then climbing left turn to 3500 on heading 260° and on LIT VORTAC R-303 to ROLAN INT/LIT 16.7 DME and hold.

| | | | | |
|-------------------------|---|-----------------------------------|-------------------------------|---------------------------|
| D-ATIS 125.65 | LITTLE ROCK APP CON 135.4 353.6 | ADAMS TOWER 118.7 257.8 | GND CON 121.9 339.8 | CLNC DEL 118.95 |
|-------------------------|---|-----------------------------------|-------------------------------|---------------------------|



| | | |
|----------|----------|----------|
| ELEV 266 | D | TDZE 258 |
|----------|----------|----------|



| CATEGORY | A | B | C | D |
|---|----------------------|-----------------------|--------------------------------|------------------------|
| S-ILS 4L | 508/40 250 (300-3/4) | | | |
| S-LOC 4L | 960/40 | 702 (700-3/4) | 960-1 5/8 | 702 (700-1 5/8) |
| C CIRCLING | 960-1 694 (700-1) | 1000-1 734 (800-1) | 1180-2 3/4 914 (1000-2 3/4) | 1180-3 914 (1000-3) |
| JIRUR FIX MINIMUMS (DUAL VOR RECEIVERS OR DME REQUIRED) | | | | |
| S-LOC 4L | 720/40 | 462 (500-3/4) | 720/50 | 462 (500-1) |
| C CIRCLING | 820-1 554 (600-1) | 1000-1 734 (800-1) | 1180-2 3/4 914 (1000-2 3/4) | 1180-3 914 (1000-3) |

SC-1, 25 FEB 2021 to 25 MAR 2021

SC-1, 25 FEB 2021 to 25 MAR 2021