

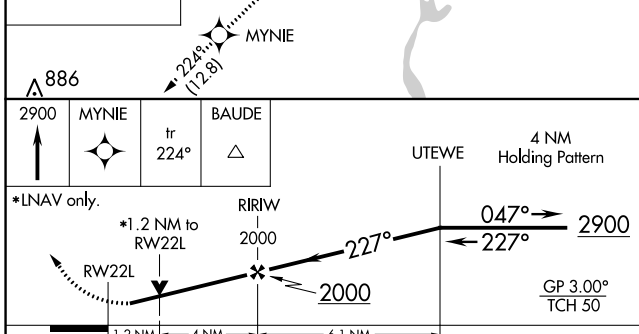
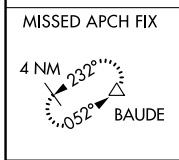
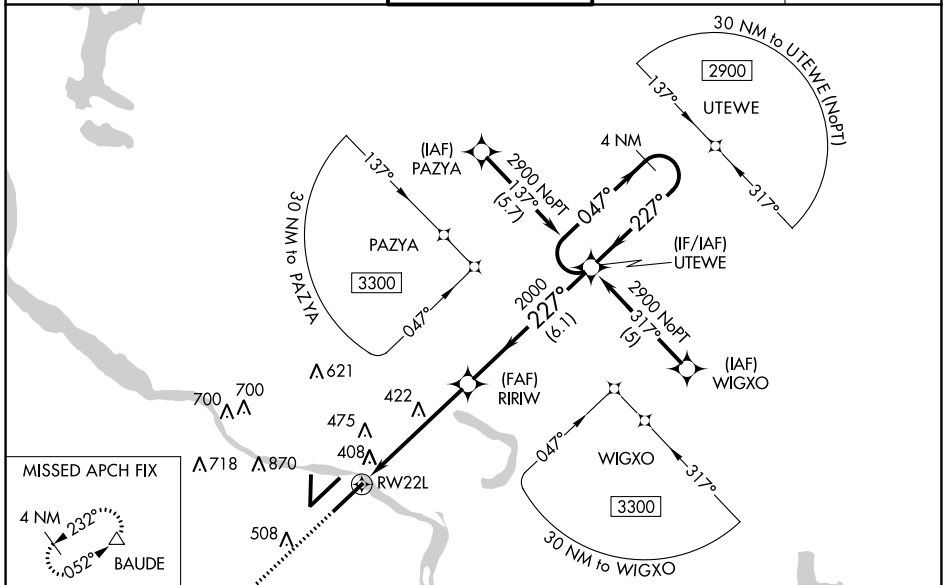
WAAS CH 42811 W22A	APP CRS 227°	Rwy Idg 7200 TDZE 260 Apt Elev 266
--	------------------------	---

RNAV (GPS) RWY 22L

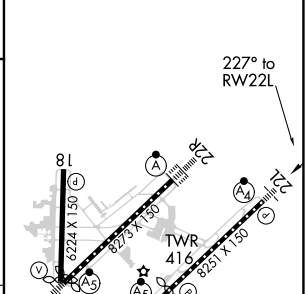
BILL AND HILLARY CLINTON NATIONAL/ADAMS FIELD (LIT)

RNP APCH. For uncompensated Baro-VNAV systems, LNAV/VNAV NA below -15°C or above 48°C. ▼ Rwy 22L helicopter visibility reduction below ¾ SM NA. Inop table does not apply to LPV, LNAV/VNAV or LNAV Cat C and D. For inop ALS, increase LNAV Cat A and B visibility to RVR 5000. Simultaneous approach authorized. LNAV procedure NA during simultaneous operations. Use of FD or AP required during simultaneous operations.	MALSF 	MISSED APPROACH: Climb to 2900 direct MYNIE and on track 224° to BAUDE and hold.
---	-----------	---

D-ATIS 125.65	LITTLE ROCK APP CON 135.4 353.6	ADAMS TOWER 118.7 257.8	GND CON 121.9 339.8	CLNC DEL 118.95
-------------------------	---	-----------------------------------	-------------------------------	---------------------------



ELEV 266	D	TDZE 260
----------	----------	----------



CATEGORY	A	B	C	D
LPV DA		543/50	283 (300-1)	
LNAV/VNAV DA		774-1¾	514 (600-1¾)	
LNAV MDA	680/40	420 (500-¾)	680/60	420 (500-1¼)
C CIRCLING	820-1 554 (600-1)	1000-1 734 (800-1)	1180-2¾ 914 (1000-2¾)	1180-3 914 (1000-3)

TDZ/CL Rwy 22R
MIRL Rwy 18-36
HIRL Rwys 4R-22L and 4L-22R

SC-1, 25 FEB 2021 to 25 MAR 2021

SC-1, 25 FEB 2021 to 25 MAR 2021