

WAAS CH 70611 W04B	APP CRS 046°	Rwy Idg 7200 TDZE 260 Apt Elev 266
--	------------------------	---

RNAV (GPS) RWY 4R

BILL AND HILLARY CLINTON NATIONAL/ADAMS FIELD (LIT)

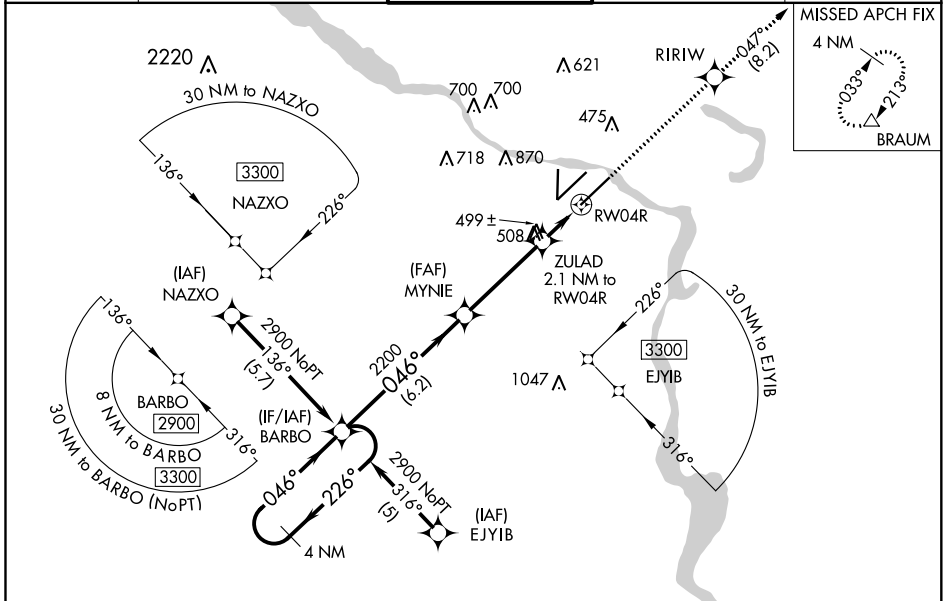
RNP APCH.

For uncompensated Baro-VNAV systems, LNAV/VNAV NA below -15°C or above 48°C. Rwy 4R helicopter visibility reduction below ¾ SM NA.
 Simultaneous approach authorized. LNAV procedure NA during simultaneous operations. Use of FD or AP required during simultaneous operations.
 For inop ALS, increase LNAV Cat A and B visibility to RVR 5000.

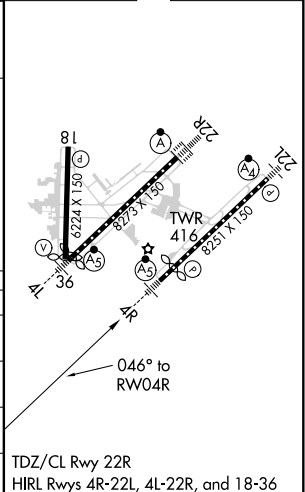
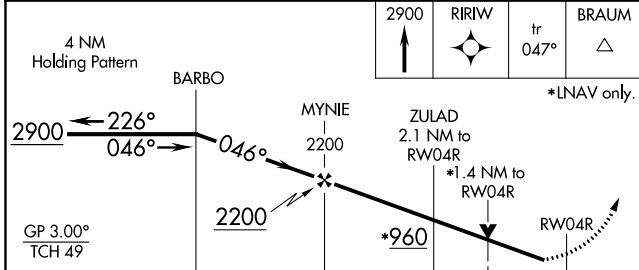
MALSR

MISSED APPROACH: Climb to 2900 direct RIRIW and on track 047° to BRAUM and hold.

D-ATIS 125.65	LITTLE ROCK APP CON 135.4 353.6	ADAMS TOWER 118.7 257.8	GND CON 121.9 339.8	CLNC DEL 118.95
-------------------------	---	-----------------------------------	-------------------------------	---------------------------



ELEV 266	D TDZE 260
----------	-------------------



CATEGORY	A	B	C	D
LPV DA	574/40		314 (400-¾)	
LNAV/VNAV DA	728/60		468 (500-1¼)	
LNAV MDA	760/40 500 (500-¾)		760/50 500 (500-1)	
C CIRCLING	820-1 554 (600-1)	1000-1 734 (800-1)	1180-2¾ 914 (1000-2¾)	1180-3 914 (1000-3)

TDZ/CL Rwy 22R
HIRL Rwy 4R-22L, 4L-22R, and 18-36

SC-1, 25 FEB 2021 to 25 MAR 2021

SC-1, 25 FEB 2021 to 25 MAR 2021