

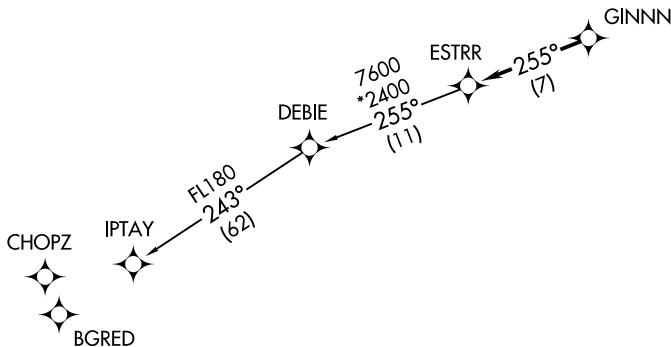
(ESTRR4.ESTRR) 19003

ESTRR FOUR DEPARTURE (RNAV)

LANCASTER COUNTY-MC WHIRTER FIELD (LKR)
LANCASTER, SOUTH CAROLINA
AL-5853 (FAA)

**TOP ALTITUDE:
3000**

AWOS-3
120.825
GCO
121.725
UNICOM (CTAF)
122.725
CHARLOTTE DEP CON
120.05 307.8



TAKEOFF MINIMUMS
Rwys 6, 24: Standard.

- NOTE: For turbojets only.
- NOTE: DME/DME/IRU or GPS required.
- NOTE: RNAV 1.
- NOTE: RADAR required.
- NOTE: If unable to accept climb rates, advise ATC on initial contact.
- NOTE: Upon reaching 10000 MSL, accelerate to and maintain 280K, if unable advise ATC.

NOTE: Chart not to scale.



DEPARTURE ROUTE DESCRIPTION

Climb on heading assigned by ATC, expect RADAR vectors to GINNN, then on track 255° to ESTRR, then on IPTAY transition. Maintain 3000, expect clearance to filed altitude within 10 minutes after departure.

IPTAY TRANSITION (ESTRR4.IPTAY)

ESTRR FOUR DEPARTURE (RNAV)
(ESTRR4.ESTRR) 03JAN19

LANCASTER, SOUTH CAROLINA
LANCASTER COUNTY-MC WHIRTER FIELD (LKR)

SE-2, 25 FEB 2021 to 25 MAR 2021

SE-2, 25 FEB 2021 to 25 MAR 2021