

WAAS CH 58318 W27A	APP CRS 272°	Rwy Idg TDZE 494 Apt Elev 494
--	------------------------	---

RNAV (GPS) RWY 27

LOUISA COUNTY/FREEMAN FIELD (LKU)

RNP APCH

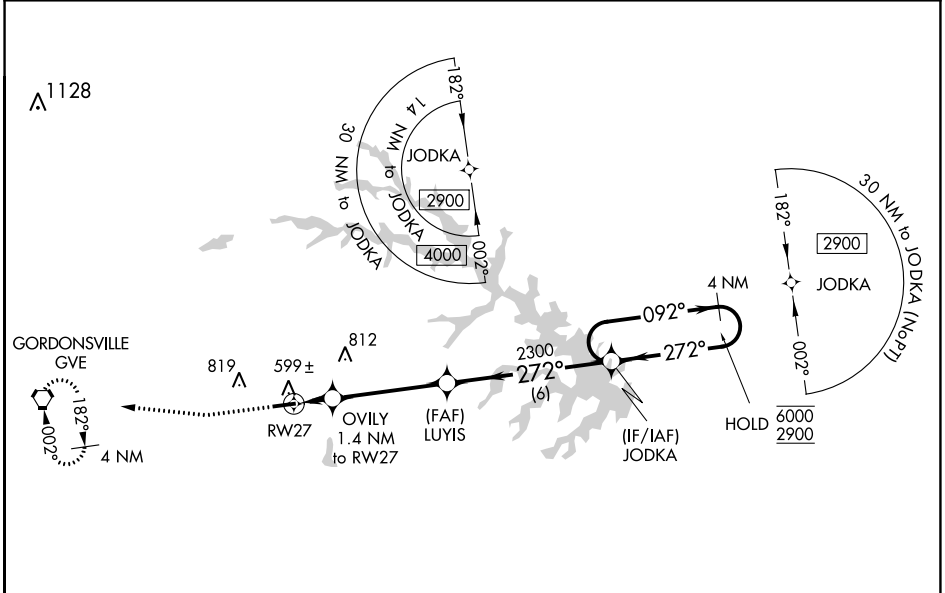
⚠ Circling NA north of Rwy 9-27. Baro-VNAV NA when using Orange altimeter setting. For uncompensated Baro-VNAV systems, LNAV/VNAV NA below -15°C or above 54°C. When local altimeter setting not received, use Orange altimeter setting and increase all DA to 780 feet and all MDA 40 feet and increase LPV and LNAV/VNAV visibility $\frac{1}{8}$ SM.

MISSED APPROACH: Climb to 1000 then climbing right turn to 2900 direct GVE VORTAC and hold, continue climb-in-hold to 2900.

AWOS-3
119.475

POTOMAC APP CON
132.85 323.125

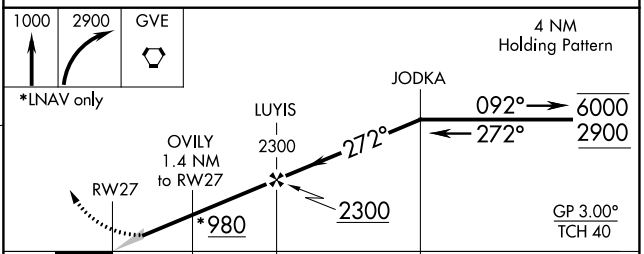
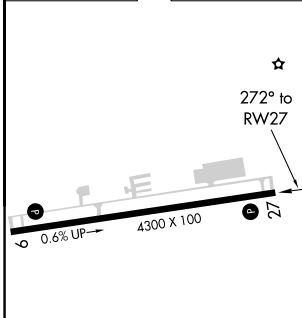
UNICOM
122.975 (CTAF) 0



NE-3, 25 FEB 2021 to 25 MAR 2021

NE-3, 25 FEB 2021 to 25 MAR 2021

ELEV 494	TDZE 494
-----------------	-----------------



CATEGORY	A	B	C	D
LPV DA	744- $\frac{3}{4}$	250 (300- $\frac{3}{4}$)		NA
LNAV/VNAV DA	744- $\frac{3}{4}$	250 (300- $\frac{3}{4}$)		NA
LNAV MDA	860-1	366 (400-1)		NA
CIRCLING	900-1	960-1		
	406 (500-1)	466 (500-1)		NA