

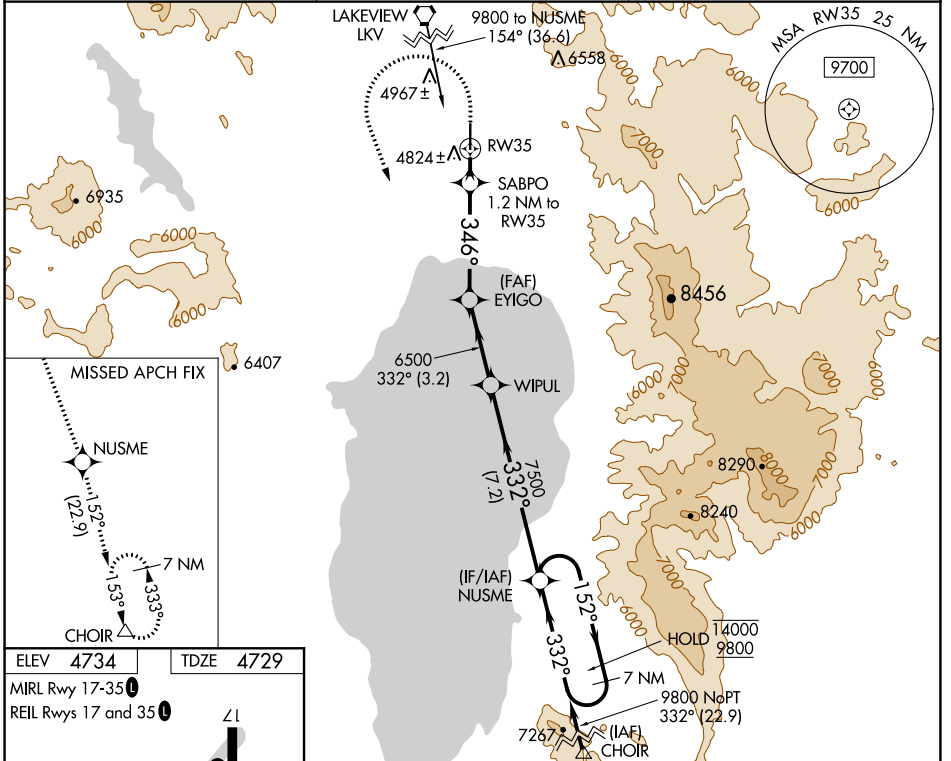
WAAS CH 99332 W35A	APP CRS 346°	Rwy Idg TDZE Apt Elev	5318 4729 4734
--	------------------------	-----------------------------	---

RNAV (GPS) RWY 35

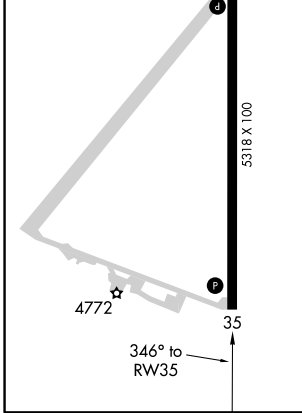
LAKE COUNTY (LKV)

RNP APCH.	MISSED APPROACH: (Do not exceed 235K until NUSME) Climb to 5200 then climbing left turn to 11000 direct NUSME and on track 152° to CHOIR and hold.
<p>For uncompensated Baro-VNAV systems, LNAV/VNAV NA below -24°C or above 50°C. Circling NA east of Rwy 17-35.</p>	

AWOS-3PT 135.525	SEATTLE CENTER 127.6 346.35	UNICOM 122.8 (CTAF) 0
----------------------------	---------------------------------------	---------------------------------



ELEV 4734	TDZE 4729
MIRL Rwy 17-35	REIL Rwys 17 and 35



5200	11000	NUSME	tr 152°	CHOIR	NUSME	7 NM Holding Pattern
*LNAV only		SABPO 1.2 NM to RW35	6500	EYIGO	WIPUL	14000 9800
RW35		5160*	6500	7500	332°	332°
1.2 NM		4.2 NM	3.2 NM	7.2 NM	GP 3.00° TCH 45	
CATEGORY	A	B	C	D		
LPV DA	4979-1 250 (300-1)					
LNAV/VNAV DA	5121-1½ 392 (400-1½)					
LNAV MDA	5080-1 351 (400-1)					
CIRCLING	5160-1 426 (500-1)	5220-1 486 (500-1)	5320-2 586 (600-2)	5480-2½ 746 (800-2½)		

NW-1, 25 FEB 2021 to 25 MAR 2021

NW-1, 25 FEB 2021 to 25 MAR 2021