

# SKYEE ONE DEPARTURE (RNAV)

AL-9041 (FAA)

VANCE BRAND (LMO)  
LONGMONT, COLORADO

DENVER DEP CON  
126.1 360.75

**TOP ALTITUDE:  
FL230**



### TAKEOFF MINIMUMS

Rwy 11: Standard.

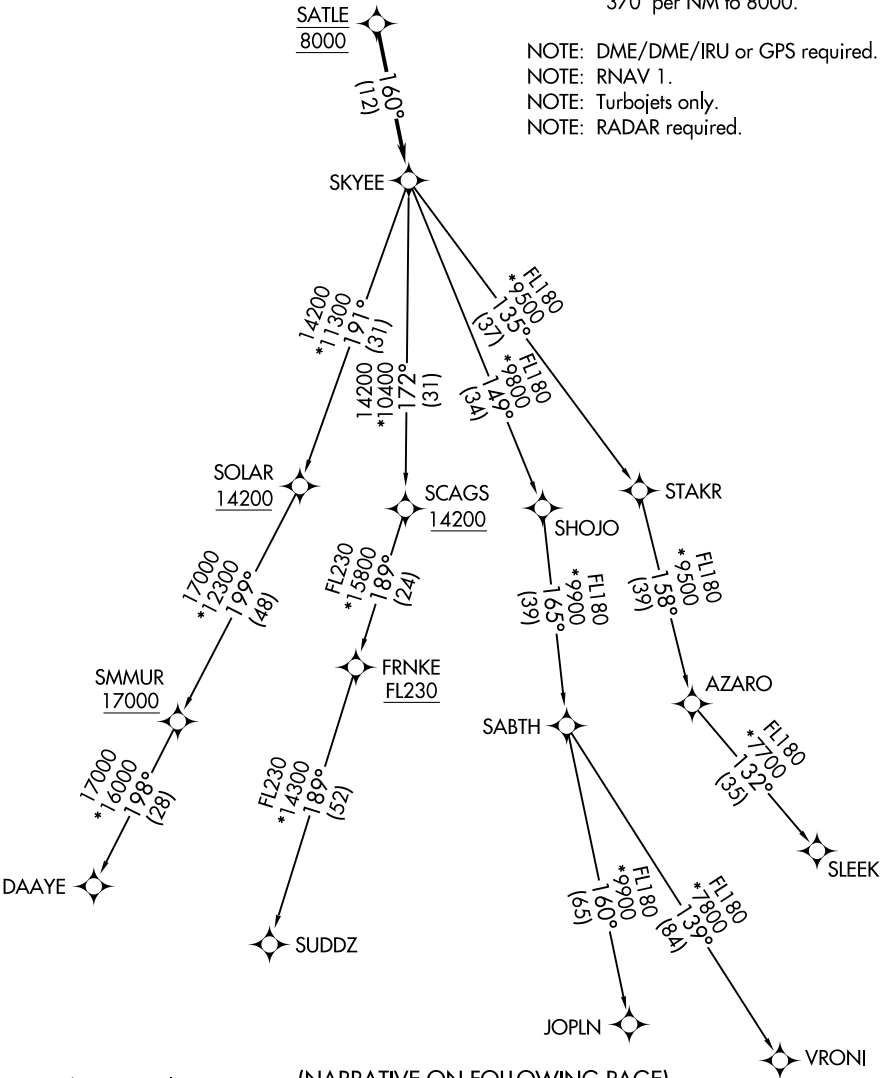
Rwy 29: Standard with minimum climb of  
370' per NM to 8000.

NOTE: DME/DME/IRU or GPS required.

NOTE: RNAV 1.

NOTE: Turbojets only.

NOTE: RADAR required.



SW-1, 25 FEB 2021 to 25 MAR 2021

SW-1, 25 FEB 2021 to 25 MAR 2021

NOTE: Chart not to scale.

(NARRATIVE ON FOLLOWING PAGE)

# SKYEE ONE DEPARTURE (RNAV)