

VOR/DME BJC 115.4 Chan 101	APP CRS 345°	Rwy Idg TDZE Apt Elev	N/A N/A 5055
--	------------------------	-----------------------------	---

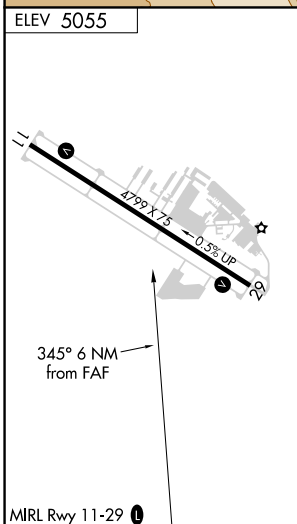
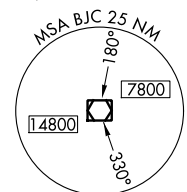
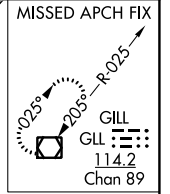
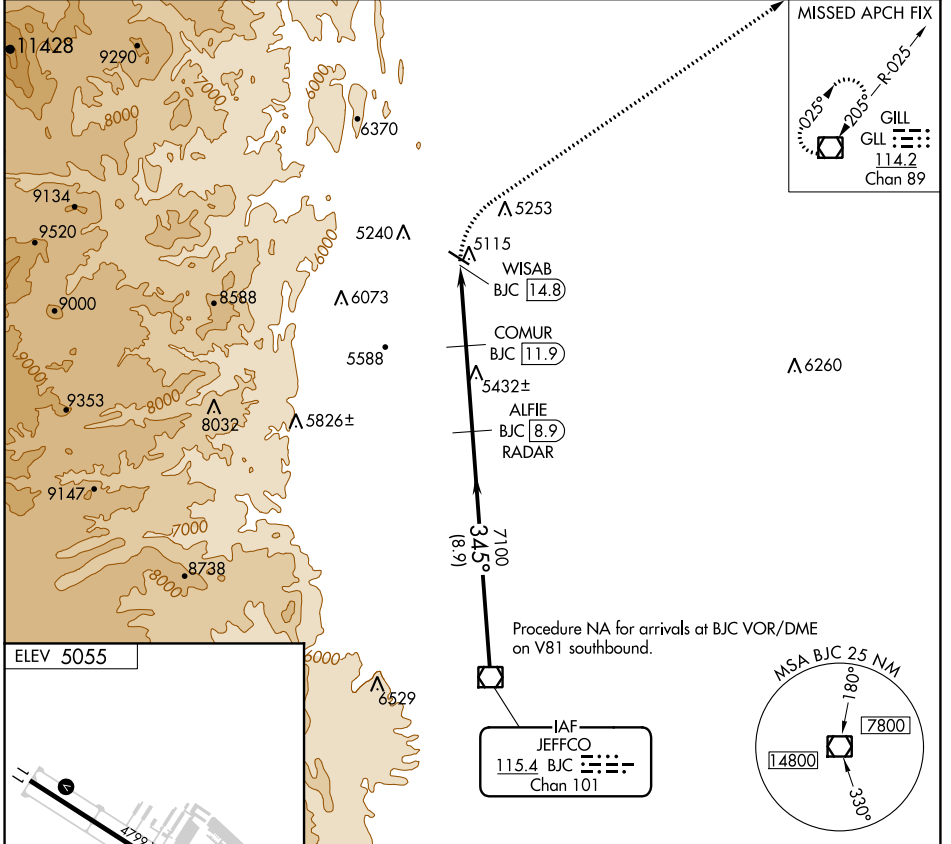
VOR/DME-A

VANCE BRAND (LMO)

⚠ When local altimeter setting not received, use Denver Intl altimeter setting and increase all MDA 120 feet; and increase Cat C visibility ½ mile and Cat D ¼ mile.

MISSED APPROACH: Climbing right turn to 7000 direct GLL VOR/DME and hold.

AWOS-3 120.0	DENVER APP CON 126.1 360.75	UNICOM 122.975 (CTAF) 0
------------------------	---------------------------------------	--



7000	GLL	ALFIE BJC 8.9 RADAR	BJC VOR/DME	
WISAB BJC 14.8	COMUR BJC 11.9	7100	9200	
2.9 NM	3.1 NM	8.9 NM		
CATEGORY	A	B	C	D
CIRCLING	5640-1	585 (600-1)	5640-1½ 585 (600-1½)	5640-2 585 (600-2)

SW-1, 25 FEB 2021 to 25 MAR 2021

SW-1, 25 FEB 2021 to 25 MAR 2021